



**West Thames
College.**
Be impressed.

2017 ENTRY
FULL TIME
COURSES
FOR 16-18
YEAR OLDS



Contents

Welcome to West Thames College 2

Open Days and Tours 2

Your Success is our Success 4

Our programme of study 6

Apprenticeships 8

Student life 10

Creative Arts Festival 16

Student voice 18

Support services 20

Course listing
pages 22-73

Your next step 74

Fees and financial assistance 76

How to apply 77

Index 78

Travel Inside back cover

Your Guide to Full Time courses for 16-18 year olds.

All information in this prospectus was correct at the time of printing but may be subject to change, as we regularly review our course offer, qualifications and facilities in order to meet demand. The latest course information is always available on our website west-thames.ac.uk.

Course areas

Full index
pages 78-79

Business and Accounting 22

Computing and ICT 24

**Health, Social Care and
Childcare** 26

Science 28

Art and Design 30

**Animation and Games
Design** 32

**Creative and Digital
Technologies** 34

Media 36

Music 38

Performing Arts 40

Dance 42

Hairdressing 44

Beauty Therapy 46

Specialist Makeup 48

Sport 50

**Uniformed Public
Services** 52

**Travel, Tourism and
Aviation** 54

ESOL 56

Supported Learning 58

**Skills+Logistics Centre
introduction** 62

Catering 64

**Construction and
Building Services** 66

Engineering 70

Motor Vehicle 72

Open Days and Tours

Meet our lecturers and students,
ask questions and take a tour of
our excellent facilities.

See pages 2-3



Welcome to West Thames College

'What are your plans after your GCSEs?' This is probably a question you are hearing a lot at the moment. This is an exciting time, but it can also be confusing especially as there are so many options available.

At West Thames College we are committed to helping you take the next step.

We will ensure you gain the skills, knowledge and experience you need for the future. Our vocational courses are taught by experienced professionals. Alternatively you could choose one of our growing number of apprenticeships to continue your education in the workplace.

Our strong links with employers ensure you have access to industry leaders and excellent work experience opportunities. Above all, our reputation for the help and guidance we give to all our students is second to none.

And we are successful. Our students achieve outstanding results and go on to do amazing things. Whether it is progressing to university or gaining employment in the job of their choice.

Your journey to fulfilling your dreams is just beginning and we look forward to welcoming you to West Thames College.

Tracy Aust, Principal

Open Days and Tours

Meet our lecturers and students, ask questions and take a tour of our excellent facilities. If you can't make the Open Day dates, we offer monthly tours for individuals and small groups.

Please book online at west-thames.ac.uk

Main campus/ Isleworth

for all courses *except* catering, construction, engineering, logistics and motor vehicle

2016


Thu 13 October, 5-7pm

Sat 12 November, 10am-1pm

2017

Wed 8 February, 5-7pm

Sat 25 March, 10am-1pm



“Our students achieve outstanding results and go on to do amazing things.”

Tracy Aust Principal

**Skills+Logistics
Centre / Feltham**

for catering, construction,
engineering, logistics and
motor vehicle courses *only*

2016
Thu 17 November,
4-6pm

Your success

source / National Achievement Tables 2014-15

81%
success rate
for **16-18** year olds
across all levels

source / West Thames College Student Survey 2014-15

84% of
our students would
recommend the
college to a friend.



HIGHEST PERFORMING
COLLEGE IN LONDON

source / National Achievement Tables 2014-15

is our success.

82% of

West Thames College students gained a place at university by Sept 2015 (national average 74%).

source / West Thames College data

Good with
Outstanding
features.

Ofsted
Report
2014

“

The college provides a vibrant, lively environment where students aspire.

A good job starts here

At West Thames College we will ensure that you have the right skills to start a rewarding career. This starts with a **Programme of study** designed to meet your needs, access to expert **Careers advice and guidance** and opportunities to **Work with leading employers**.

Programme of study

What will I study?

Our courses are designed to give you practical, work-related qualifications to progress to employment or university.

What level are they?

From Level 1 up to Level 5 - a Level 3 BTEC course is equivalent to completing 3 A Levels.

How many subjects will I study?

You choose one core subject, for example Health and Social Care or Manufacturing Engineering. Your programme of study will also include:

- Employability skills such as team work and problem solving, to help you get a job.
- English and/or maths depending on your GCSE results.
- iLearn to teach you how to make the most of digital information.

How long do they take?

Most Level 1 and 2 courses take one year and a Level 3 course will usually take 2 years, just like A Levels.

Can I progress to university?

Yes, if you have completed a course that is Level 3 or above.

How are they assessed?

Courses are continually assessed through a combination of coursework, practical projects and tests.

Careers advice and guidance

"We see our job as preparing students for life after they leave college, which means getting them job ready," says Martina Greeves, the college's Work Experience, Employability and Careers Manager.

Our independent careers team will help you make the right decision for your future and identify the skills you need to succeed. This includes employability training, where you learn skills such as how to write a CV and problem solving. *"We give our students opportunities that will give them that edge in applying for a job,"* says Martina.

"Work experience is important because it's something practical on the CV and something that they can talk about at interview. It enables our students to gain a realistic perception of what they think work in general will be like. It also helps them confirm whether the work is something they definitely want to do or not."



Martina Greeves, the college's Work Experience, Employability and Careers Manager.

Work with leading employers

West Thames College prides itself on its strong links with companies. We have over 500 contacts with businesses and because our students make such a good impression, they have many opportunities for jobs, work experience and internships.

Heathrow
Making every journey better



Earn as you learn



Apprenticeships provide the perfect balance between getting a qualification and earning a wage. They enable you to start working, earn money and get hands on experience whilst at the same time studying for the qualification.

Who can be an apprentice?

Anyone aged 16 or over who is employed for at least 30 hours per week.

How do I get a job?

You need to find a suitable job before you can become an apprentice. If you don't have a job, we might be able to help you find one. We have vacancies on our website with local employers who are looking to recruit apprentices in a wide range of jobs.

What will I earn as an apprentice?

The average salary for an apprentice in London is £200 per week but pay will vary depending on the job you are doing and your employer. The minimum average wage for an apprentice is currently £3.30 per hour.

How often will I go to college?

Most apprentices come to college for one day a week, but it depends on your programme. Some apprentices do most of their training in the workplace and may only come to college once a month, whereas others may spend more time at college.

How long does it take?

It varies but on average 12-15 months for a Level 2 Apprenticeship and 18-24 months for a Level 3.

Which Apprenticeships does West Thames offer?

At present we have Apprenticeships at Level 2 (Intermediate) and Level 3 (Advanced) in the areas listed below. We also offer some Higher and Degree Apprenticeships - see our website for details.

Apprenticeship	Level 2	Level 3
Business and ICT		
Business Administration	✓	✓
Customer Service	✓	✓
ICT	✓	✓
Care and Pharmacy		
Childcare	✓	✓
Pharmacy	-	✓
Catering and Hospitality		
Hospitality Services	✓	✓
Professional Cookery	✓	✓
Construction and Mechanics		
Carpentry	✓	-
Painting and Decorating	✓	-
Plumbing	✓	-
Motor Vehicle Mechanics	✓	-
Hair and Beauty		
Beauty Therapy	✓	✓
Hairdressing	✓	✓
Media		
Media	-	✓

We also offer a Pre-Apprenticeship in Construction and a Logistics Traineeship (the traineeship is for 16-24 year olds only).



Saadiq is an award winning apprentice who completed a Customer Service apprenticeship at Hounslow Council and has not looked back since. As an apprentice he worked four days a week in their Audio Visual and Events department and came to West Thames College one day a week to study for his Level 3 NVQ.

The skills he learnt as an apprentice have varied from practical skills such as performing sounds checks to interpersonal skills that come from working in a unique organisation like the council. Saadiq strongly believes that completing an apprenticeship was definitely the right route for him: *"An apprenticeship is the best way to get a feel of what the work environment is like. I have nearly two years' experience of working within a local government and I've been earning a salary doing so"*.

"An apprenticeship is the best way to get a feel of what the work environment is like."

Saadiq Cornelius Apprentice

Find out more

Detailed factsheets for all our Apprenticeship programmes are available on our website west-thames.ac.uk

Call **020 8326 2020** or email apprenticeships@west-thames.ac.uk

Student life





Most students, staff and visitors comment on how friendly and welcoming we are.





Student common room

You can watch music, sport or films on the plasma TV screens, surf the internet, play pool, table tennis, table football and other games, or just meet with friends in our common room and café areas.

Student activities

You can get involved in a variety of clubs and societies to build on your existing interests or to explore new ones. You can take part in tournaments, talent shows, trips, competitions, fundraising activities and cultural awareness events, such as Black History Month and World Aids Day.

Sports

You can play football, badminton, netball, basketball, cricket, table tennis, volleyball, Zumba, boxing and much more in our sports hall and outdoor pitches. We take our sport seriously – our successful college teams play in competitive leagues and regularly win trophies.



Gym

Our gym is fully equipped with treadmills, cycling and rowing machines, cross trainers, resistance machines and weights to keep you fit and toned.

Hair and beauty salon

Get thoroughly pampered with a beauty treatment or new hairstyle and buy professional products for a fraction of the normal cost. See our website for the latest special offers or call the salon on **020 8326 2201**.



Open Days and Tours

Meet our lecturers and students, ask questions and take a tour of our excellent facilities.

See pages 2-3

Creative Arts Festival



Every summer our students show off their creative talents through art and design exhibitions, fashion and specialist makeup catwalk shows, film and video screenings and live music, dance and drama performances. Industry talent scouts come to our shows and snap up our students for top jobs.

If you're into the Creative Arts, this is not to be missed!



Student voice

We want you to feel part of the college and to have your say. There are several ways you can get involved and gain valuable experience, which will look great on your CV.

Student Ambassadors

Our student ambassadors help to promote the college to prospective students and their parents as well as assisting at events such as our award ceremonies. *“Being an ambassador for West Thames helps to involve you more in college life - you learn more about the college and share your experiences with potential students. You also gain employability skills such as working in a team,”* explains Navjit, a student ambassador since 2012 and Student Ambassador of the Year 2016. *“I really like studying at West Thames and I love being able to share this with others.”*

Student Governors

Student governors are elected by their peers to put the opinion of the students to the college’s governing body. They work with the governors to improve the education and the teaching at West Thames College. *“We’re the link between the students and the governing body,”* explains Gurjit, a former student governor. *“It is a great opportunity to help make the college, education and teaching better. We also get ideas from the governors as to what the students can do to improve.”*

The Student Union

You will automatically become a member of the college’s Student Union, which promotes the interests and views of students at West Thames College. It is run by students for students so you can also be elected to a leadership position on the Student Union Executive Team. Gurjit was previously the Environmental Officer. *“During the year, I increased awareness among students of things like recycling and helped improve the college by having a recycling bin in every classroom, for example.”*

The college Student Union is affiliated to the National Union of Students.

Course Representatives

Finally you can speak for your academic group by becoming a course representative. You would work with the curriculum managers to give feedback and help resolve any issues.

We want to work with you to improve the college, and by getting involved you can help to make a real difference at West Thames.

Open Days and Tours

Meet our lecturers and students, ask questions and take a tour of our excellent facilities.

See pages 2-3



STUDENT AWARDS 2016

Awarded to
Navjit Kaur
for
Student Ambassador of the Year Award

A. Auer
Principal



West Thames
College
Student Awards
2016
Navjit Kaur
Student Ambassador
of the Year

Here to help

You will have access to a range of support services throughout your time at the college.

Student Learning Advisers

Tutors who you will meet regularly to monitor your progress, attendance and assist with any issues.

Counselling

Talk through problems or stressful situations in complete confidence with a professional counsellor.

Learning Support

You will have access to specialist teachers who provide support outside the classroom to help improve literacy and numeracy, study skills and tackle assignments.

We believe all students should have fair and equal access to their chosen learning programme and all aspects of college life. If you have a **disability** or **learning difficulties** we will make reasonable adjustments to ensure that college facilities are accessible and that all your learning and support needs are met.

See our website for further details or contact our Head on Inclusion on 020 8326 2103.

Welfare and Support

Contact our team for practical financial advice and help with bursaries and entitlements.

Learning Resources Centre

A range of services to support your studies including computers, study spaces, online and offline resources and helpful staff.



“We have an excellent reputation for the additional support we give to our students.”

Business and Accounting

Features/

- 'Students successfully develop skills relevant to the world of business, such as teamwork, communication and problem solving.' **Ofsted 2014**
- Engage with businesses such as Coca-Cola and Goldman Sachs and visits organised, for example to Sky and the Houses of Parliament and Heathrow.

 Apprenticeships

Find out more/

 west-thames.ac.uk  020 8326 2020



Foundation Business Administration with ESOL Support

Level 1 BTEC Certificate, Edexcel ESOL (Skills for Life) and City & Guilds Functional Skills Maths

For students whose first language is not English. This course is ideal for those progressing from an ESOL 16-18 course (see page 57).

Duration 1 year

What will I study? Business units which cover creating business documents, welcoming visitors, working in business administration, recording business transactions and handling mail. You will also work towards an ESOL and maths qualification.

Next step BTEC Level 2 Business.

Entry requirements You should have a pass at ESOL Entry 3 or equivalent. You will have an assessment.

Foundation Business and Travel

Level 1 BTEC Certificates

Foundation Learning courses are for students with few qualifications and are designed to give you the skills to progress to Level 2.

Duration 1 year

What will I study? Business units which cover creating business documents, welcoming visitors, working in business administration, recording business transactions and rights and responsibilities. Travel and tourism units include the UK tourism industry, UK travel and tourism destinations, preparing for employment in travel and tourism, customer service, locational geography and planning for visits. You will also study functional skills in English and maths. The course includes visits and work based activities.

You will study Business from September to December, then Travel and Tourism from January to June.

Next step BTEC Level 2 Business or Travel and Tourism or an Apprenticeship.

Entry requirements None, but you will have an assessment and interview.

Business

Level 2 BTEC Extended Certificate

For students interested in business who wish to improve their career opportunities.

Duration 1 year

What will I study? Business purposes, business organisations, financial forecasting and people in organisations, plus specialist units such as starting a small business, business online, customer relations in business and business communications. The course includes trips, visits and work based activities.

You will also study English and maths and gain valuable employability skills.

Next step BTEC Level 3 Business, Professional Accounting with Business, employment in a business environment or an Apprenticeship.

Entry requirements 2 or more GCSEs at grade D/grade 3 or above, or successful completion of a Foundation Level course including functional skills in English and maths.

Business

Level 3 BTEC Diploma / Extended Diploma

Equivalent to 3 A Levels, this course is for advanced students who want to develop a career as a business decision-maker or progress to university.

Duration 2 years

What will I study? Exploring business, developing a marketing campaign, personal and business finance, managing an event, recruitment and selection process, recording financial transactions.

You will have a 2 week work experience placement, go on study trips and visits to business and commercial centres, and take part in enterprise challenges.

Next step HND or degree programme or employment in a business role.

Entry requirements 4 or more GCSEs at grades A*-C/ grades 9-5 or BTEC Level 2 at merit or above with functional skills in maths and English.

Computing and ICT

Features/

- Dedicated networking lab for Cisco.
- Specialist software to support teaching.
- Opportunity to gain an additional Microsoft qualification.
- Guest speakers, work-related projects, live briefs and competitions, eg WorldSkills.



Find out more/

 west-thames.ac.uk  020 8326 2020



Introductory Diploma in Information Technology - Creating Digital Products

Level 1 Certificate in Digital Applications (CiDA)

For students with few qualifications. Foundation Learning courses are designed to give you the skills to progress to Level 2.

Duration 1 year

What will I study? Being organised, developing a personal progression plan, working with others, researching a topic, developing digital information using IT, using digital communication technologies, solving technical IT problems, creating a website, developing a digital product, creating a digital animated graphic.

You may visit organisations which use technical equipment to understand how they are used in a work context.

Next step BTEC Level 2 Extended Certificate in Information and Creative Technology.

Entry requirements None, but you will have an assessment.

Introductory Certificate in Information Technology - Creating Digital Products with ESOL

Level 1 Certificate in Digital Applications (CiDA), Edexcel ESOL (Skills for Life) and City & Guilds Functional Skills Maths

For students with few qualifications whose first language is not English. This course is ideal for those progressing from an ESOL 16-18 course (see page 57).

Duration 1 year

What will I study? Being organised, solving technical IT problems, creating a website, developing a digital product, creating a digital animated graphic. You may visit organisations which use technical equipment to understand how they are used in a work context.

You will work towards an ESOL and maths qualification.

Next step BTEC Level 2 Extended Certificate in Information and Creative Technology.

Entry requirements You should have a pass at ESOL Entry Level 3 or equivalent.

Information and Creative Technology

Level 2 BTEC Extended Certificate

For students who are interested in a career in ICT.

Duration 1 year

What will I study? Core units include the online world, technology systems and a digital portfolio. You will study other units such as computer networks, creating digital animation, mobile apps development, creating digital graphics, website development and installing computer hardware.

Next step BTEC ICT National Extended Diploma in Computing if you achieve a merit or distinction.

Entry requirements 2 or more GCSEs at grade D or above or successful completion of a Level 1 course with functional skills in English and maths.

Computer Systems with Data Cabling

new

Level 2 Diploma

For students who are interested in working in the communication / data cabling industry.

Duration 1 year

What will I study? You will study five main units: installing and testing fibre optic cables, installing and testing copper cabling, customer support provision, using the internet and maintaining ICT equipment.

Next step Employment in the thriving communications industry.

Entry requirements 2 or more GCSEs at grade D/grade 3 or above or successful completion of a Level 1 course with functional skills in English and maths.

ICT National Extended Diploma in Computing

Level 3 BTEC Diploma / Extended Diploma. Professional Cisco and Microsoft qualifications are also available for an additional fee.

Equivalent to 3 A Levels, this course is for advanced students interested in a career in systems support, networking or programming.

Duration 2 years

What will I study? You will study common units in year 1 including principles of computer science, fundamentals of computer systems, IT systems security and encryption, business applications of social media, website development, computer games development, mobile apps development.

In Year 2 you will study additional units which build on the core units.

Next step HND or degree programme at university or related employment.

Entry requirements At least 4 GCSEs at grades A*-C/ grades 9-5 or a BTEC Level 2 Diploma with a merit (or equivalent) with functional skills in English and maths. You will take an aptitude assessment to establish your suitability for the course.

Health, Social Care and Childcare

Features/

- Graded Outstanding by Ofsted in April 2014.
- Purpose built teaching room with specialist care equipment.
- Work experience in health and care settings such as children's nurseries and care homes.



Find out more/

 west-thames.ac.uk  020 8326 2020



Foundation Health and Social Care and Childcare DBS

Level 1 Pearson BTEC Diploma (QCF)

Foundation Learning courses are for students with few qualifications and are designed to give you the skills to progress to Level 2.

Duration 1 year

What will I study? Personal care, job opportunities, promoting healthy eating, creative activities for adults in care and for young children, planning for the physical and emotional care needs of children and valuing children as individuals. You will take part in practical activities, go on visits and benefit from guest speakers.

You will also study functional skills in English and maths.

Next step BTEC Level 2 Health and Social Care if you successfully complete all modules or an Apprenticeship in Health and Social Care or Childcare.

Entry requirements None, but you will have an assessment and interview.

Health and Social Care DBS

Level 2 Pearson BTEC NQF Diploma

For students who want to work in a health and social care setting.

Duration 1 year

What will I study? Human lifespan development, health and social care values, carrying out a research project, effective communication, equality and diversity, individual rights and healthy living. Optional units may include human body systems and care of disorders, vocational experience, creative and therapeutic activities, social influences and the impact of nutrition on health and wellbeing. Work experience is a mandatory part of the course.

You will improve your English and maths and gain employability skills.

Next step BTEC Level 3 Diploma Health and Social Care, CACHE Level 3 Diploma in Childcare or an Apprenticeship.

Entry requirements 2 or more GCSEs at grade D/grade 3 or above or Level 1 Functional Skills English, or successful completion of a Foundation Level course with functional skills in English and maths. You also need a good reference.

Health and Social Care DBS

Level 3 BTEC Diploma / Extended Diploma

Equivalent to 3 A Levels, this course is for advanced students who want to work in nursing, social work, psychology, criminology, residential care, youth work or the probation service.

Duration 2 years

What will I study? Effective communication, equality, diversity and rights, health, safety and security, development through the life stages, anatomy and physiology, personal and professional development, sociological and physiological perspectives, and values and planning.

Work experience is a mandatory part of the course.

Next step HNC in Health and Social Care at West Thames College or a degree in nursing, midwifery, sociology, psychology, social work, criminology or youth work or relevant employment.

Entry requirements 4 GCSEs at grades A*-C/grades 9-5 or a merit or distinction at Level 2 with functional skills in English and maths at Level 2 and a good reference.



DBS

You need to have a DBS check before starting these courses, see page 76.



Science

Features/

- Specialist equipment including DNA analysis equipment and advanced optical telescope.
- Workshops on topics such as radiography, physics and electricity.
- Links with local plant science industries.
- Progression to jobs such as a radiographer, nurse, aeronautical engineer, dental technician, civil engineer or pharmacist.

Find out more/

 west-thames.ac.uk  020 8326 2020



**student
success**

Zeinab Abdulhameed Diploma in Applied Science

Having completed her course, Zeinab obtained offers from a number of universities and has accepted a place to study Pharmaceutical Science at Kingston University.



Applied Science and Technology

Level 1 BTEC Diploma

For students who want to develop the knowledge and skills needed to progress to further study and ultimately to employment in Applied Science or a related sector.

Duration 1 year

What will I study? This course provides an introduction to the sector, enabling students to make informed future progression choices while developing and applying their knowledge and acquiring a range of relevant practical, communication and personal development skills.

Next step Level 2 Applied Science or an apprenticeship.

Entry requirements None but you will have an assessment.

Pre GCSE Science and ESOL

Level 1 Pre-GCSE Science, Edexcel ESOL (Skills for Life) and City & Guilds Functional Skills Maths

For students whose first language is not English who need to build a solid foundation for studying GCSEs in science.

Duration 1 year

What will I study? The course is designed to prepare you for study at GCSE level. You will study English, maths, study skills and citizenship, as well as chemistry, physics and biology from the GCSE syllabus.

The course includes visits to local places of interest.

Next step GCSEs in science subjects.

Entry requirements You should have a pass at ESOL Entry 3 or equivalent. You will have an assessment and an interview.

GCSE Science and ESOL

Level 2 GCSEs in science subjects and maths and IGCSE Certificate in English

For students whose first language is not English and those from a non-traditional background.

Duration 1 year

What will I study? GCSEs in biology, chemistry, physics and maths plus iGCSE English. Language support will be built into your programme and you will have weekly lessons to help you develop good study techniques.

Additional support is available if you need to improve your spelling, vocabulary and writing skills.

Next step BTEC Level 3 Applied Science.

Entry requirements Science at Level 1 such as our pre-GCSE Science course. You may be asked to sit an entrance test in science, maths and IGCSE English.

Applied Science

Level 2 BTEC Diploma

For students interested in a career in science.

Duration 1 year

What will I study? Chemistry and our earth, energy and our universe, biology and our environment. You will also complete optional units which may include chemical substances, physical science, a practical scientific project, science and the world of work, investigating a crime scene, using mathematical tools in science, chemical analysis and detection, and science in the world.

You will improve your English and maths and gain employability skills.

Next step If you gain a merit or distinction, you can progress to BTEC Level 3 Applied Science.

Entry requirements 2 or more GCSEs at grade D/grade 3 or above (preferably in science) or successful completion of a relevant Level 1 course and English reading and writing skills at Level 1-2.

Applied Science (Laboratory and Industrial Science)

Level 3 BTEC Diploma

For advanced students who are interested in a career in science and progressing to university. Those interested in forensic science may select forensics units.

Duration 2 years

What will I study? The course covers the fundamentals of science, working in the science industry, scientific investigation and practical techniques, perceptions of science and application of numbers. You will also study mathematics, statistics, human physiology, microbiology techniques, genetics and genetic engineering, medical physics techniques, electrical circuits, chemical reactions, chemical periodicity, and organic chemistry. You will have a 2-week science-related work placement.

Next step HND in Applied Biology or a degree at university such as BSc Biomedical Science, Radiography, Pharmacology or Forensic Science.

Entry requirements 4 GCSEs at grades A*-C/grades 9-5 preferably including science or a merit or distinction in a relevant subject at Level 2 with functional skills in English and maths.

Art and Design

Features/

- 'Students have specialist art and design workshops and studios. These are safe, well presented and enlivened by inspiring displays of learners' work.' **Ofsted 2014**
- Progress to top universities and art schools such as Goldsmiths and Central St Martin's.
- Prepare for work as graphic designer, animator, digital painter, illustrator, CG modeller or costume designer.
- Teachers are practising designers with industry experience.

Find out more/

 west-thames.ac.uk  020 8326 2020



**student
success**

Vytenis Semenas Foundation Diploma Art and Design

"West Thames has opened so many doors to my future career. I designed the college magazine and was honoured that one of my final project illustrations was used as the Creative Arts Festival logo. I am really grateful for this valuable experience."



design / April Nool Baldonado,
UAL Foundation Diploma in Art and Design

Art and Design

Level 1 Award/Diploma

Foundation Learning courses are for students with few qualifications and are designed to give you the skills to progress to Level 2.

Duration 1 year

What will I study? A variety of subjects such as exploring 2 dimensions, discovering 3 dimensions, drawing, painting, printmaking, mixed media, creating surface relief, 3D design crafts and 3D design.

You will create personal projects and study functional skills in English and maths.

Next step Level 2 Art and Design or another Level 2 course if you successfully complete all modules.

Entry requirements None, but you will have an assessment.

Art and Design

Level 2 Diploma

For creative students interested in a career in design.

Duration 1 year

What will I study? 2D and 3D visual communication, photography, printmaking, graphic design, contextual references, exploring, developing and producing art and design, building a portfolio, and working in the art and design industry. You will learn to work with 3D design crafts and visual arts briefs and use specialist equipment in our design studios.

There will also be visits to museums and exhibitions. You will improve your English and maths and gain employability skills.

Next step Level 3 Diploma in Art and Design or Animation and Games Design if you achieve a merit or distinction.

Entry requirements 2 or more GCSEs at grade D/grade 3 or above or successful completion of a Level 1 course with functional skills in English and maths. We will ask to see a portfolio of your work during your interview.



Art and Design

Level 3 Diploma / Extended Diploma

This course is equivalent to 3 A Levels and is for advanced students who want to go on to university or art school or a specialist career in art and design.

Duration 2 years

What will I study? You will study units such as visual recording, materials, techniques and processes, ideas and concepts, communication through art and design, contextual influences and computers in art and design. You will use our specialised equipment and take part in practical workshops, lectures, debates, gallery visits and independent research.

You will go on trips to museums and exhibitions and exhibit your work during our Creative Arts Festival.

Completion of both years is equivalent to 3 A Levels.

Next step Foundation Diploma in Art and Design, HND or BA (Hons) degree, or relevant employment.

Entry requirements 4 GCSEs at grades A*-C/grades 9-5 or a merit or distinction at Level 2 with functional skills in English and maths. We will ask to see a portfolio of your work during your interview.

Art and Design

Level 3-4 Foundation Diploma

For advanced students who wish to build up a portfolio to progress to higher education. This course is normally a requirement for entry to BA (Hons) degree programmes at prestigious art schools.

Duration 1 year

What will I study? Drawing, painting, printmaking, wood, metal and plastics, textiles, graphics, illustration and contextual studies, fine art, images and communication, 3D design, surface pattern and decoration. You may also study photography, computer-aided design and video.

You will visit exhibitions and studios and go on a study trip. Previous trips have included Cornwall, Venice, Lisbon and Barcelona.

Next step BA (Hons) degree at university or art school.

Entry requirements At least one A Level, Level 3 or other relevant qualification in art and design with 4 or more GCSEs at grades A*-C/grades 9-5. We also consider students who can demonstrate exceptional ability. You will need to show a portfolio of your work at your interview.

ual: university
of the arts
london
awarding body

These courses are accredited by the University of the Arts London Awarding Body, the only specialist art, design and creative industries awarding organisation in England.

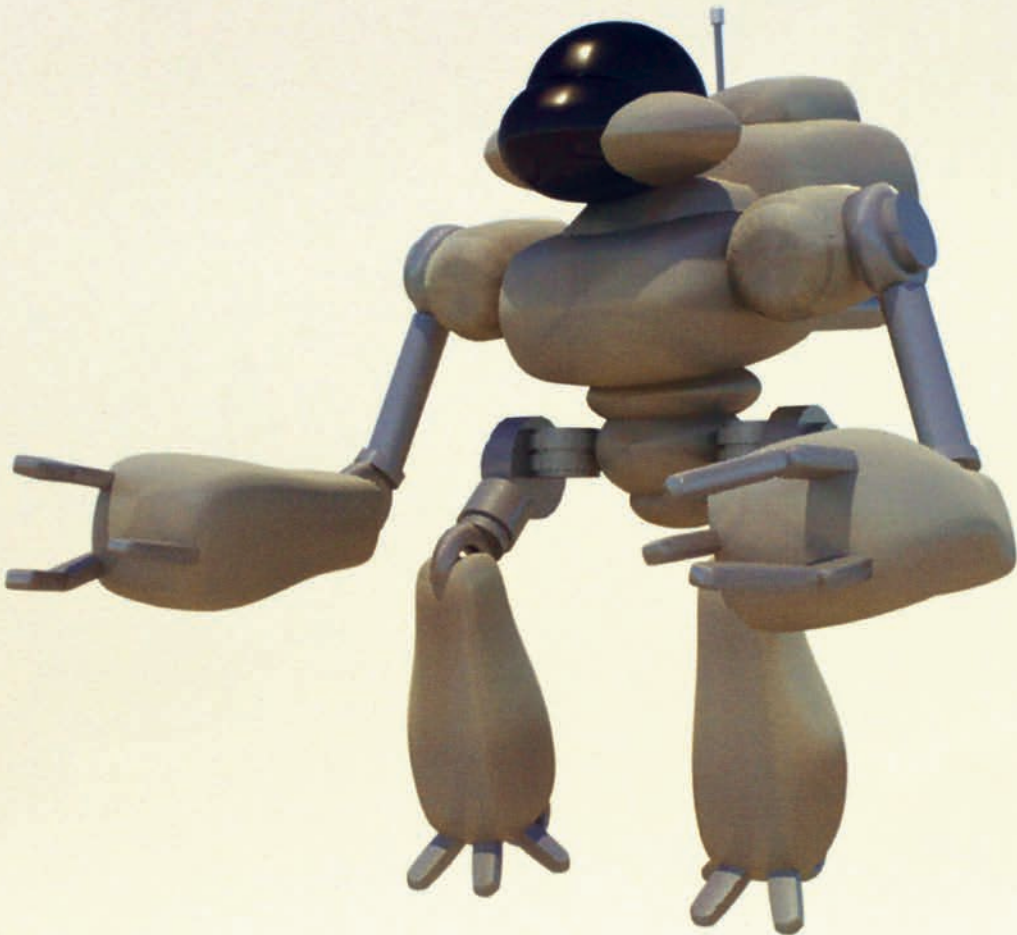
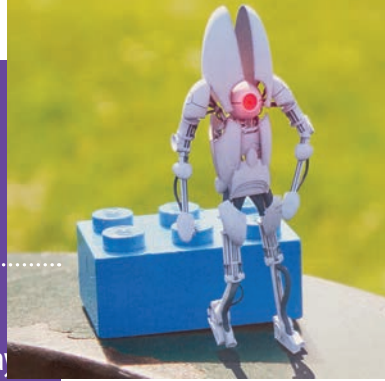
Animation and Games Design

Features/

- Multimedia suites with industry standard software: Maya, Mudbox, Unity, After Effects, Animate CC, Photoshop etc.
- Preparation for work in architectural visualisation, 3D game asset development, game design, animation, VFX etc.
- Students progress to BA VFX courses at universities such as Hertfordshire and Bournemouth.
- Taught by industry professional who has worked for Portal, Mediahouse and Darlow Smithson.

Find out more/

 west-thames.ac.uk  020 8326 2020



Animation and Games Design

Level 3 Diploma / Extended Diploma

Equivalent to 3 A Levels, this course is for advanced students who want to go on to higher education or a career in animation or games design.

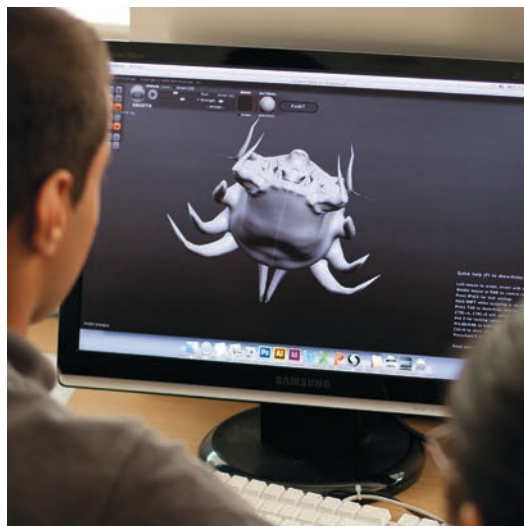
Duration 2 years

What will I study? You will work in our new multimedia suites, gaining experience in 3D modelling, rigging, level design, asset and character development and introductory programming. You will use industry standard software, Maya, Mudbox, Unity, After Effects and Photoshop. We believe that students need to be engaged in every aspect of this subject and foster imaginative skills to feed back to their design work.

We make use of London's great resources with visits to industry shows, theatres, films and museums and you will showcase your work during our Creative Arts Festival.

Next step Foundation Diploma in Art and Design, HND or BA (Hons) degree, or relevant employment.

Entry requirements 4 GCSEs at grades A*-C/grades 9-5 or a merit or distinction in a relevant subject at Level 2 with functional skills in English and maths. We will ask to see a portfolio of your work during your interview.



ual: university
of the arts
london
awarding body

This course is accredited by the University of the Arts London Awarding Body, the only specialist art, design and creative industries awarding organisation in England.

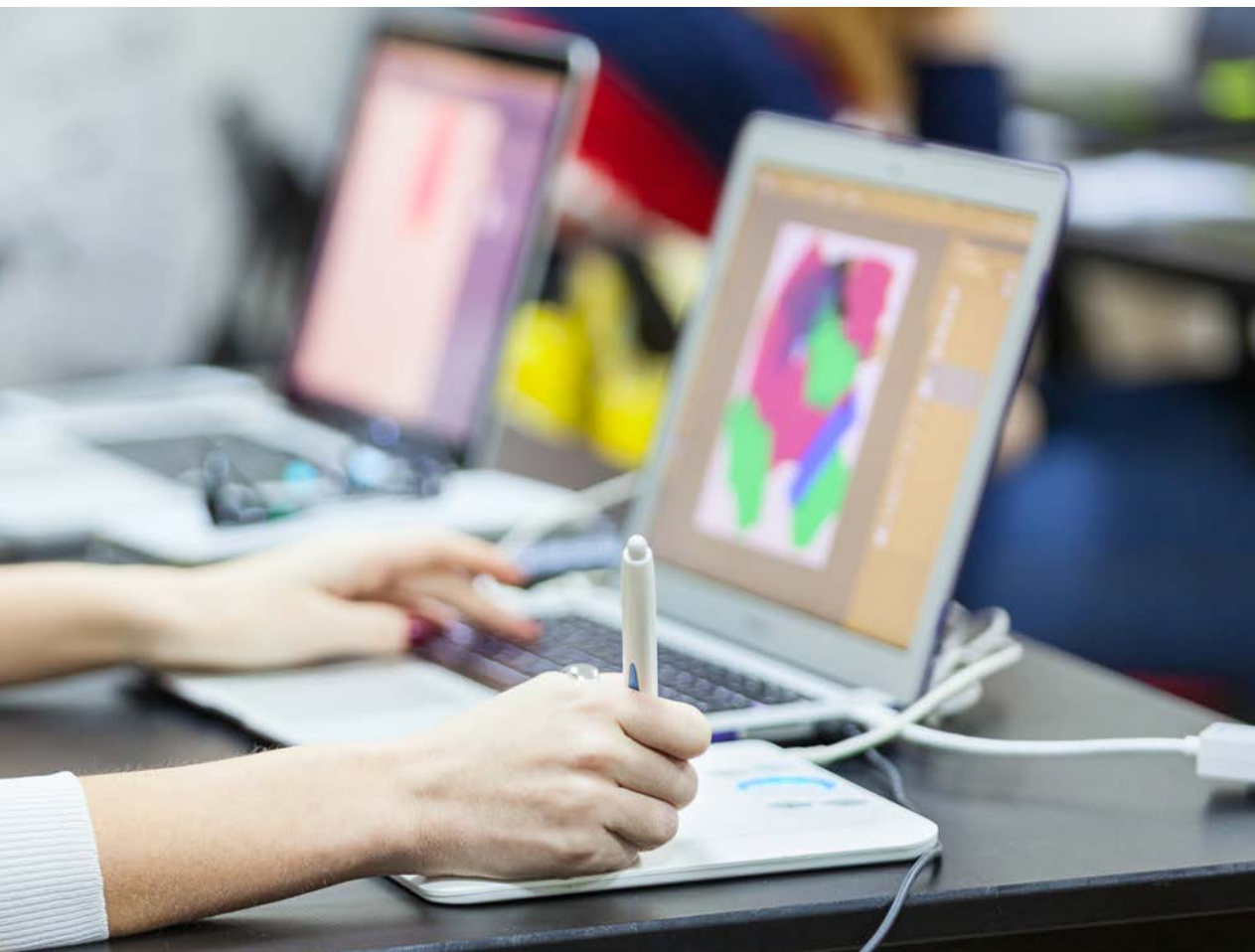
Creative and Digital Technologies

Features/

- Use professional software including Final Cut Pro, Photoshop, After Effects and In Design.
- Multiple MAC computer rooms for editing and production.
- Links with top employers with work experience and live briefs eg Create and Craft and Premier Inn.

Find out more/

 west-thames.ac.uk  020 8326 2020



Media, Digital and Creative **new**

Level 1 Diploma

For students who want to gain new skills and get a qualification.

Duration 1 year

What will I study? You will explore moving image, visual effects, photography and graphic design. You will also learn the foundations of coding and web development.

Next step Level 2 Creative Media Production or Information and Creative Technology Course.

Entry requirements None but you will have an interview.

Creative and Digital Technologies (Interactive Media) **new**

Level 2 Diploma

For students who are interested in a career in creative digital media industries.

Duration 1 year

What will I study? You will gain an insight into new digital media, creative and other skills to work in the creative media industries. You will study digital media sectors and audiences, digital photography for a media product, animation for digital media, graphic design for digital media, website production and digital games production as well as learning the foundations of coding.

Next step Level 3 Diploma in Creative and Digital Technologies.

Entry requirements 2 or more GCSEs at grade D/grade 3 or above or successful completion of a Foundation Level course with functional skills in English and maths.



Creative and Digital Technologies (Interactive Media) **new**

Level 3 Diploma / Extended Diploma

For students who are creative and want to develop skills for work in the creative digital media industries

Duration 2 years

What will I study? You will develop skills to work in the creative media industries. You will study digital graphics for interactive media, interactive media design and motion graphics and compositing video, photography and photographic practice, web animation, digital communication, sound in interactive media as well as learning coding and web authoring.

Next step HND in Creative Media Production, a degree course at university or employment in the media industry.

Entry requirements At least 4 GCSEs at grades A*-C/ grades 9-5 or the Level 2 Diploma with a merit or distinction with functional skills in English and maths.



Media

Features/

- State of the art TV studio with professional camera and chroma key special effects, 7 sound recording, audio / MIDI music production suites.
- Live briefs and work experience, eg with Premier Inn and WorldSkills London.
- Industry visits, for example to Sky and BBC.



Find out more/

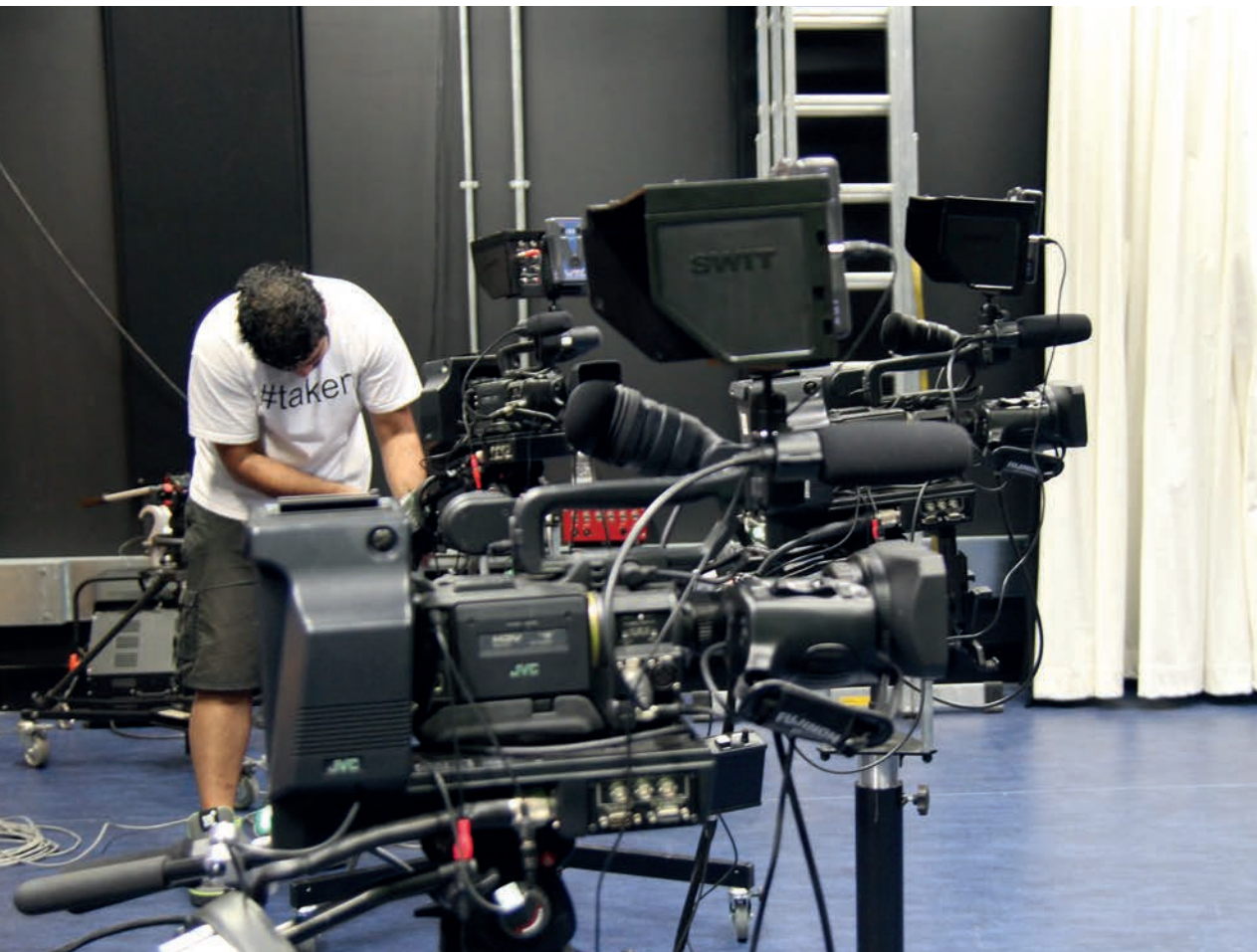
 west-thames.ac.uk  020 8326 2020



**student
success**

Gabrielle Luu-Moynihan Level 3 Creative Media

Gabrielle is well on her way to a successful career in media having secured a highly sought after Fast Forward internship placement at Sky Studios.



Creative Media Production

Level 2 Diploma

For students who want to develop skills for future work in the creative media industries.

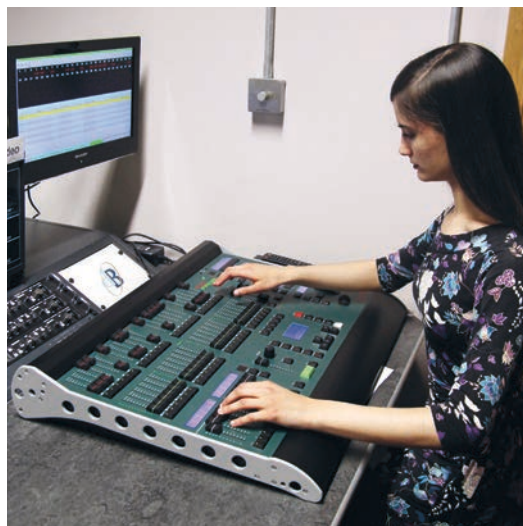
Duration 1 year

What will I study? You will do practical projects in our professional TV studio using the latest technologies in film editing, including Final Cut and Adobe Audition for radio production. You will study research for creative media, video production, audio production, media audiences and products.

You will go on industry visits, eg to Sky Studios, take part in workshops and go to regular film screenings. You will also improve your English and maths and gain employability skills.

Next step Level 3 Creative Media Production.

Entry requirements 2 or more GCSEs at grade D/grade 3 or above or successful completion of a Foundation Level course with functional skills in English and maths.



Creative Media Production (Television and Film)

Level 3 Diploma / Extended Diploma

This course is equivalent to 3 A Levels and is for advanced students who want to work in the film and TV industries.

Duration 2 years

What will I study? You will get practical experience using Final Cut, Adobe Premiere and Photoshop for film editing and radio production. You will learn single and multi-camera techniques, scriptwriting for film and factual programming, television documentary and music video production, and presenting and interviewing techniques for broadcast journalism. Theory content focuses on understanding how meaning is created by the media and how audiences are targeted.

Industrial visits are integral to the course, including local trips to Sky, BBC, Teddington and Warner Bros Studios. Students recently travelled to Prague to tour the Barrandov Studio and locations for the James Bond film Casino Royale.

Next step HND in Creative Media Production, a degree course at university or employment in the media industry.

Entry requirements At least 4 GCSEs at grades A*-C/ grades 9-5 or the Level 2 Diploma with a merit or distinction with functional skills in English and maths.

Music

Features/

- 'Students have well-equipped music technology production areas and recording studios.' **Ofsted 2014**
- Industry visits, for example to EMI, Royal Opera House and Metropolis Studios.
- Students have signed record deals and gone on to work for Sky, Kiss FM and Richmond Theatre.
- Students organise, perform and engineer live gigs such as an Oxjam charity event and the West Thames College Creative Arts Festival.

Find out more/

 west-thames.ac.uk  020 8326 2020



**student
success**

Tyler Sanis Level 3 Music

"My band, Bird Brain Mafia, played our first show at the Alleycat, a Denmark Street venue that once played host to The Rolling Stones. We recently played Southlands Festival where we sold copies of the EP that we wrote, recorded and mixed at the college."



Contemporary Music (Performance/Technology)

Level 2 Diploma

This course is for students who want to work in the music or music technology industry.

Duration 1 year

What will I study? You will make music with computers and record, compose and perform both individually and in groups. You will explore the music profession and study composition, recording, development of music, computer music production and music performance.

You may visit exhibitions and take part in band recording assignments or improvisation. You will also improve your English and maths and gain employability skills.

Next step Level 3 in Music if you achieve a merit or distinction.

Entry requirements 2 or more GCSEs at grade D/grade 3 or above or successful completion of a Foundation Level course with functional skills in English and maths. There will be a short audition as part of your interview to assess your musical aptitude.



Contemporary Music (Performance/Technology)

Level 3 Diploma / Extended Diploma

This course is equivalent to 3 A Levels and is for advanced students who want to develop a career in the music industry.

Duration 1/2 years

What will I study? This course has been developed with the aim to provide you with all the essential skills that a music performer or music producer needs.

As a performer you will use the latest digital equipment to practice and perform many styles of contemporary music. You will learn about performance techniques and stage craft, performing in ensembles and as a soloist, and song writing. You will perform at events in and out of the college including our Creative Arts Festival and Oxjam.

As a music producer/sound engineer you will use the latest music software packages such as Logic Pro X, Protools and Reason. You will learn sequencing, mixing, mastering, sound recording, music composition and how to set up and sound engineer a live music event. You will produce a portfolio including an album, film scores, sound design for film and take part in live performances with a technical or performance role.

Next step A HND or university degree in music performance, music production, sound engineering, music management or live events management. You can also seek employment in the music industry as a session musician or music producer and assistant engineer or work at a record label.

Entry requirements At least 4 GCSEs at grades A*-C/ grades 9-5 or a merit or distinction in a relevant subject at Level 2 with functional skills in English and maths. You must have proven performance/instrument skills. If you don't have Grade 3 or higher we can assess your abilities through an audition at interview.

Performing Arts

Features/

- Professional theatre with sound and lighting rig.
- Teachers with exceptional industry experience and contacts.
- Students have progressed to starring roles in film, theatre and TV, or found work as technicians in costume or makeup departments.
- Visits and work experience at prestigious West End venues including the National Youth Theatre, Donmar Warehouse, Lyric Theatre Hammersmith, British Council.

Find out more/

 west-thames.ac.uk  020 8326 2020



Performing Arts and Dance

Level 2 Diploma

For students interested in dance and drama. You don't need previous experience, but if you have taken part in the performing arts before, you'll build on your skills and experience.

Duration 1 year

What will I study? Based in our Endeavour Theatre and performance studios, you will devise and perform in plays and learn dance, singing and mask making. You will get involved in productions and see professional musicals and stage shows.

You may also take part in workshops with performing arts professionals. You will improve your English and maths and gain employability skills.

Next step Level 3 in Performing Arts (Acting) or (Dance) if you gain a merit or distinction.

Entry requirements 2 or more GCSEs at grade D/grade 3 or above or successful completion of a Foundation Level course with functional skills in English and maths. You will have a workshop audition as part of your interview.

Performing Arts (Acting)

Level 3 Diploma / Extended Diploma

This course is equivalent to 3 A Levels and is for advanced students with a passion for acting who want to go on to a career in performing arts.

Duration 2 years

What will I study? You will develop your skills in dance, drama, singing, acting technique, voice and speech, costume design, mask and puppet work, production technology and arts administration.

You will work on productions and be involved in all areas from backstage to front-of-house. You'll visit a variety of performance venues and will perform in several productions throughout the year in our Endeavour Theatre.

Next step HND in Performing Arts, BA (Hons) degree at university or a career in the performing arts.

Entry requirements At least 4 GCSEs at grades A*-C/ grades 9-5 or a merit or distinction in a relevant subject at Level 2 with functional skills in English and maths. You will have an audition as part of your interview.

ual: university
of the arts
london
awarding body

These courses are accredited by the University of the Arts London Awarding Body, the only specialist art, design and creative industries awarding organisation in England.

Dance

Features/

- 'Teachers use inventive approaches, ensuring the sound development of students' performance skills in dance.' **Ofsted 2014**
- Specialised dance studios.
- Teachers with exceptional industry experience and contacts.
- Take part in workshops led by directors and industry professionals.

Find out more/

 west-thames.ac.uk  020 8326 2020



**student
success**

Tyreese Remy-Henderson Level 3 Dance

Alongside studying at West Thames College, Tyreese performs with the dance company ZooNation. "I'm constantly busy but college is really supportive and helps me stay on track."



Dance

Level 3 Diploma / Extended Diploma in Performing Arts (Dance)

Equivalent to 3 A Levels, this course is for advanced students who want a career as a dancer or choreographer.

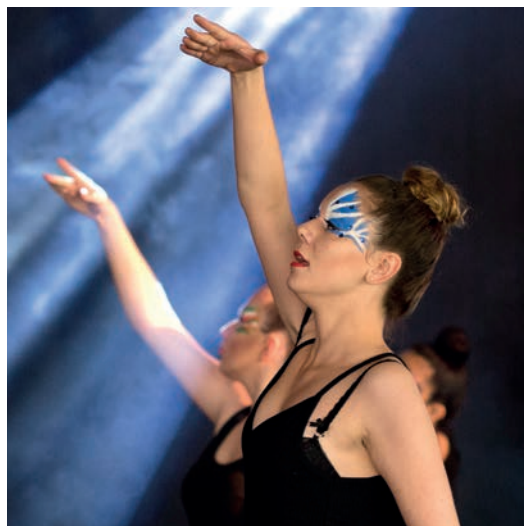
Duration 2 years

What will I study? Contemporary dance techniques: Release, Limon, Cunningham-based, Graham-based, jazz dance and urban dance styles. You will also take part in intensive workshops on a range of performance projects. You will study choreographic principles building towards the creation of your own work, alongside developing your understanding of safe practice, health and body maintenance. The course also covers the theoretical, social, historical and administrative aspects of dance.

There will be visits to a variety of performance venues as part of this course and you will perform throughout the year in our Endeavour Theatre including during our Creative Arts Festival.

Next step HND in Dance at West Thames College or BA (Hons) degree or a career in dance.

Entry requirements At least 4 GCSEs at grades A*-C/ grades 9-5 or a merit or distinction in a relevant subject at Level 2 with functional skills in English and maths. There will be an audition as part of your interview.



ual: university
of the arts
london
awarding body

This course is accredited by the University of the Arts London Awarding Body, the only specialist art, design and creative industries awarding organisation in England.

Hairdressing

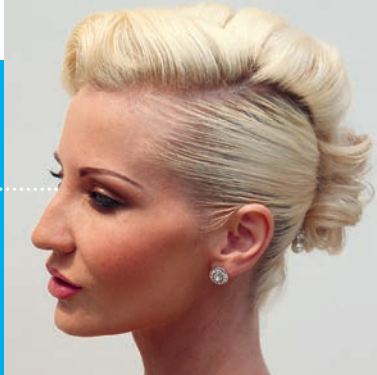
Features/

- 'Students benefit from the expert advice of hairdressing specialists.' **Ofsted 2014**
- Up to date modern training salon.
- Excellent links with L'Oréal, ensuring students use the best products.
- Work experience placements and apprenticeships available.



Find out more/

 west-thames.ac.uk  020 8326 2020



Please note Most hairdressing courses require you to purchase a kit including uniform, shoes and textbooks. Financial assistance may be available to help with these costs – please ask for details.

Foundation Hairdressing

Level 1 VTCT Award

For students who want an introduction to hairdressing.

Duration 1 year

What will I study? Through activities in class you will learn to shampoo and condition hair, style women's hair, and plait and twist hair. You will develop effective working relationships and learn about health and safety in the salon, how to prepare for hairdressing services and how to present a professional image in a salon. You will also study functional skills in English and maths, employability and team work.

You may be able to gain work experience in the college salons, go on educational visits and participate in professional training and competitions.

Next step Level 2 Hairdressing or work as a salon junior.

Entry requirements None, but you will have an assessment.

Hairdressing

Level 2 City & Guilds Diploma

For students with some experience in hairdressing who want to develop their career.

Duration 1 year

What will I study? All aspects of European ladies' hairdressing, including health and safety in the salon, client consultation, shampoo and condition hair and scalp, promote products and services to clients, cutting women's and men's hair, the art of dressing hair, colouring, lightening, perming and neutralising hair, and creating an image based on a theme.

You will also study functional skills in English and maths.

You may participate in L'Oréal training days, visit the Salon Trade Fair, and take part in competitions and work experience.

Next step Level 3 Apprenticeship in Hairdressing (after more work experience), part-time hair and beauty courses and/or work as a junior stylist.

Entry requirements 2 or more GCSEs at grade D/ grade 3 or above or Level 1 or Foundation Hairdressing with functional skills in English and maths. Some work experience dealing with the public is preferable.

Beauty Therapy

Features/

- Three well equipped training salons.
- Latest industry treatments including microderm, spray tanning and gel nails.
- Extremely well qualified lecturers, all with specialist knowledge and experience.
- Students go on to work as beauty therapists, spa therapists, makeup artists, cruise ship therapists and salon owners.

Apprenticeships

Find out more/

 west-thames.ac.uk  020 8326 2020



Please note Most beauty therapy courses require you to purchase a kit including uniform, shoes and textbooks. Financial assistance may be available to help you with these costs – please ask for details.

Foundation Beauty Therapy

Level 1 VTCT VRQ

For students who want an introduction to beauty therapy.

Duration 1 year

What will I study? An introduction to the hair and beauty sector, facial treatments and skin care, basic manicure and pedicure and how to present a professional image in a salon. You will also study functional skills in English and maths.

You can go on educational visits and participate in professional training and competitions.

Next step Level 2 Beauty Therapy, work as an assistant or receptionist in a beauty salon or an apprenticeship.

Entry requirements None, but you will have an assessment.

Beauty Therapy

Level 2 VTCT (VRQ) Diploma

For those who want a career in beauty therapy, including those with no previous experience.

Duration 1 year

What will I study? Facials, makeup, manicure and pedicure, anatomy and physiology, depilatory waxing, tanning, lash and brow tinting, eyebrow shaping, stock display, reception and salon administration. You will also study functional skills, skills development and employability skills.

Visiting lecturers provide additional input and you may visit a major health and beauty exhibition.

Next step VTCT Level 3 Diploma in Beauty Therapy Treatments to become a fully qualified beauty therapist.

Entry requirements 2 or more GCSEs at grade D/grade 3 or above or successful completion of a Foundation Level Beauty Therapy course with functional skills in English and maths.

Beauty Therapy

Level 3 VTCT (VRQ) Diploma

For students progressing from Level 2 who have achieved a high standard.

Duration 1 year

What will I study? Electrical facial and body treatments, Indian head massage, body massage, hot stone massage, microdermabrasion for the face and body, and anatomy and physiology. You will learn about salon management, health and safety, administration and retail. You will also study functional skills, skills development and employability skills.

You may visit a major health and beauty exhibition and take part in competitions.

Next step Further your career as a beauty therapist and/or study part-time specialist courses.

Entry requirements A merit or distinction in a relevant subject at Level 2 (NVQ or VTCT) with functional skills in English and maths.

Specialist Makeup

Features/

- Up-to-date, modern makeup studios with a wide range of specialist products.
- Enrichment activities from MAC and Inglot Cosmetics.
- Students have won the prestigious IMATS competition 5 times and the World Body Painting Championships twice.
- Students go on to work for the BBC, West End theatre and film productions, makeup retailers and top magazines.



Find out more/

 west-thames.ac.uk  020 8326 2020



Hair and Media Makeup Studies

Level 2 VTCT Diploma

For young people with a passion for the makeup industry.

Duration 1 year

What will I study? The art of photographic makeup, health and safety in the salon, art of dressing hair, client consultation for hair services, shaping and colouring eyebrows, applying makeup and themed face painting.

You will visit a cultural city abroad and West End theatre productions, enter national makeup competitions and attend the International Makeup Artist Trade Show (IMATS).

Next step Level 3 Diploma in Theatrical Media Makeup or Makeup Design and Hairstyling or into employment as a makeup demonstrator or a trainee makeup artist.

Entry requirements 2 GCSEs at grades D/grade 3 or above.

Makeup Design and Hairstyling

Level 3 BTEC Diploma in Production Arts

Equivalent to 1.5 A Levels, this course is for advanced students who want a career as a makeup artist for retail, theatre or makeovers.

Duration 1 year

What will I study? Day and period makeup, makeup for performers, special effects, facial hair attachments, wigs, prosthetics and body painting. You will visit West End theatre productions and have work placements. You can enter national makeup competitions and attend the International Makeup Artist Trade Show.

Next step You can progress to the 120-credit Diploma or the second year of the 180-credit Extended Diploma. You can also go into employment in retail makeup, such as MAC, Space NK or Bobbi Brown, or work in makeover studios or as a bridal makeup artist.

Entry requirements At least 4 GCSEs at grades A*-C/ grades 9-5 including English and maths, or a relevant Level 2 qualification at merit or distinction plus functional skills in English and maths.

Theatrical Media Makeup

Level 3 VTCT Diploma in Theatrical Special Effects and Hair and Media Makeup

For students with a passion for the makeup industry.

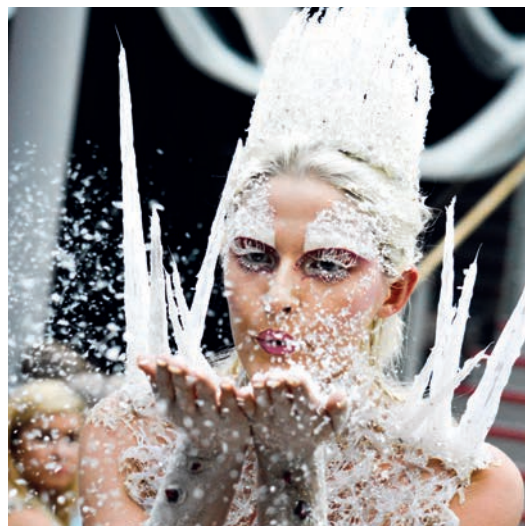
Duration 1 year

What will I study? Media and camouflage makeup, basic airbrush skills, fashion and photographic makeup, basic prosthetics, creative hair styling, facial hair and wigs, health and safety and client care.

You may visit a cultural city abroad and West End theatre productions, enter national makeup competitions, attend the International Trade Makeup Show (IMATS) and have work placements in hair salons, theatres or with makeup artists.

Next step HND in Specialist Makeup at West Thames College or employment in hair salons, as a makeup demonstrator, or in TV or in the media as a makeup artist.

Entry requirements At least 4 GCSEs at grades A*-C/ grades 9-5 including English and maths or a relevant Level 2 qualification at merit or distinction plus functional skills in English and maths.



Sport

Features/

- Specialist sports hall, gym and outdoor pitches.
- Links with Brentford FC and Top Notch Health Club.
- Top of the range fitness equipment.
- Taught by sports industry professionals.

Find out more/

 west-thames.ac.uk  020 8326 2020



**student
success**

Noah Amissah Brentford FC Elite programme

Noah has been awarded a soccer scholarship place at Manhattan College in New York achieved not only through his footballing talent, but also his willingness to succeed in the classroom.



Please note There is a small fee for your sports kit, materials and visits.

Foundation Sport with Public Services

Level 1 BTEC Certificates

For students with few qualifications. Foundation Learning courses are designed to give you the skills to progress to Level 2.

Duration 1 year

What will I study? Taking part in exercise and fitness, taking part in sport, and investigating the body systems. You will play sport in our sports hall and outdoor pitch and take part in fitness activities. You will also study functional skills in English and maths. You will be expected to wear a college sports kit.

You will study Sport from September to December and then Public Services from January to June – see Foundation Public Services and Sport, page 53.

Next step BTEC Level 2 Sport or Public Services.

Entry requirements None, but you will have an assessment.

Sport

Level 2 BTEC Diploma

For students interested in a career in the sport industry.

Duration 1 year

What will I study? Anatomy and physiology, practical sport, fitness and psychology for sport, plus functional skills in English and maths. You can also gain qualifications in first aid, lifeguarding and coaching. You will be expected to wear a college sport kit.

Next step BTEC Level 3 Sport or employment. You could consider working as a gym assistant or sports coach.

Entry requirements At least 2 GCSEs at grade D/grade 3 or above or successful completion of the Foundation Level Diploma with functional skills in English and maths

Brentford FC Elite Development programme

Level 2/3 BTEC Diploma / Extended Diploma

For male students with a keen interest in football.

Duration 2 years

What will I study? You'll study sport at the college for a recognised BTEC qualification, whilst gaining elite footballing skills from Brentford FC's professional coaching staff. Study units will include body systems, practical sport, fitness testing and training, tactical awareness and psychology.

You'll play competitive matches against other Academy teams in a league.

Next step Continue your studies at university or at the college, or sign a professional contract with Brentford or with another club. Anyone not taken on by Brentford will be offered exit trials that will be attended by other professional clubs.

Entry requirements At least 4 GCSEs at grade A*-C/ grades 9-5 or a merit or distinction in a relevant Level 2 qualification. You will be invited for a trial with Brentford FC who will assess your football skills. If successful, you will attend an interview at West Thames College.

How to apply Apply via the college website and you will be invited along to a trial session.



Sport

Level 3 BTEC Diploma / Extended Diploma

Equivalent to 3 A Levels, this course is for students who want to go on to a career in sport and fitness coaching or professional sports or progress to higher education.

Duration 2 years

What will I study? Fitness programming, sports coaching, sports development, fitness testing, anatomy, physiology, psychology, talent identification and practical individual sports.

There will be visits to sporting venues and centres of sporting excellence.

Next step A degree programme at university in a sports-related subject or employment in the sports and leisure industry.

Entry requirements 4 GCSEs at grades A*-C/grades 9-5 or a merit or distinction at Level 2 in a relevant subject with functional skills in English and maths.

Uniformed Public Services

Features/

- Students progress to jobs in the Metropolitan Police, Royal Marines, Fire Department, Armed Forces, UK Border Force, MI5, Youth Offending Teams or Ambulance Service as a paramedic.
- Residential trips and outdoor activities could include scuba diving, camping, canoeing, orienteering, abseiling and climbing.
- Visits to Intelligence Services and UK Border Force.

Find out more/

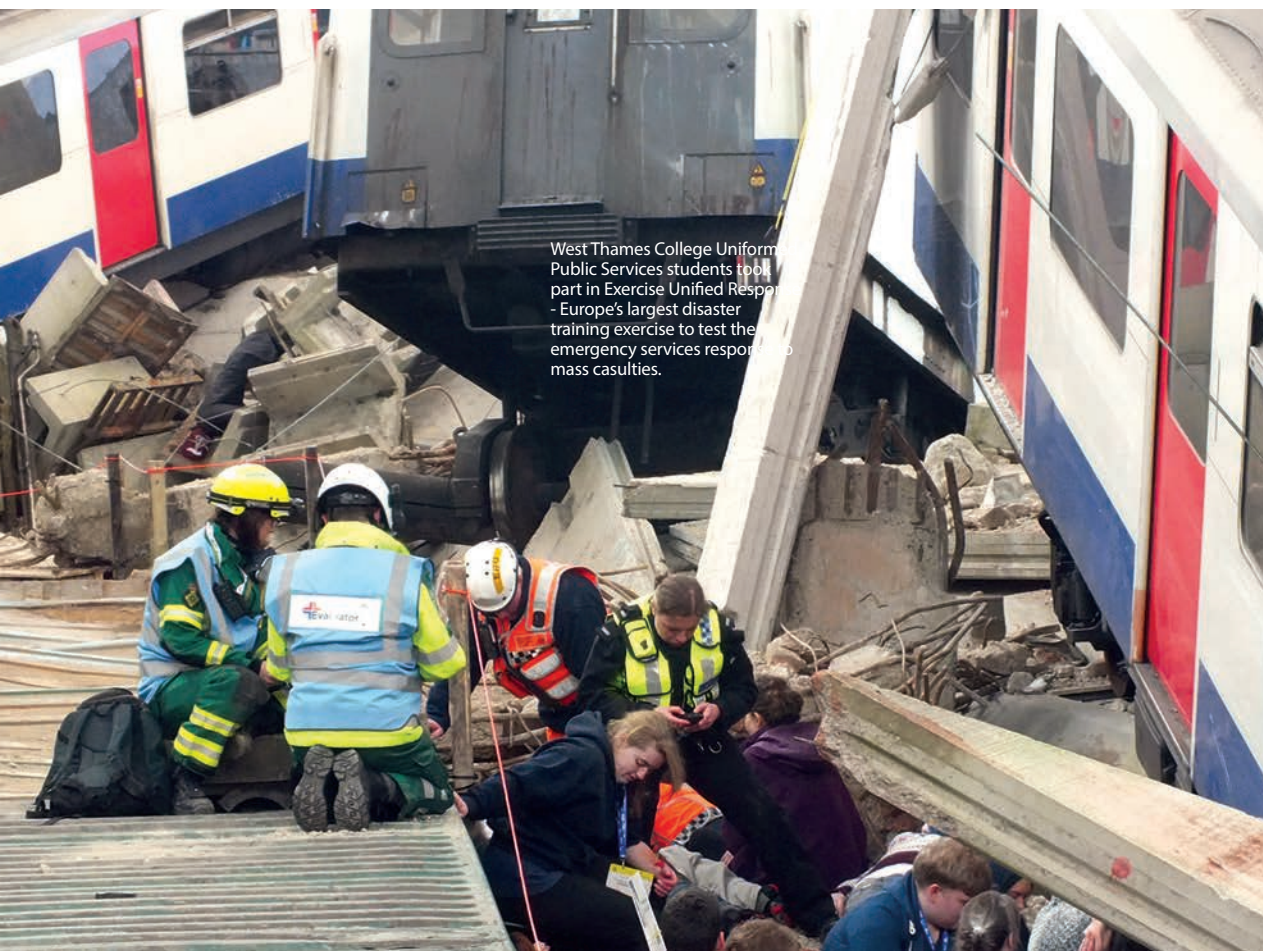
 west-thames.ac.uk  020 8326 2020



student success

Simeon Simeonov Level 3 Uniformed Public Services

Simeon has been accepted into the Metropolitan Police Service as an officer. Simeon credits his appointment to the high quality teaching at West Thames College and the excellent enrichment activities available during his course.



West Thames College Uniformed Public Services students took part in Exercise Unified Response - Europe's largest disaster training exercise to test the emergency services response to mass casualties.

Foundation Public Services and Sport

Level 1 BTEC Certificates

For students with few qualifications who are interested in a career in the armed forces or emergency services. This course is designed to give you the skills to progress to Level 2.

Duration 1 year

What will I study? You will learn about public and uniformed services in the UK, improving health and fitness, personal skills and teamwork skills. There will be visits, talks and practical sessions led by guests from the uniformed services. You will also study functional skills in maths and English.

We strongly encourage you to join a local cadet force in order to enhance your studies.

You will study Sport from September to December and then Public Services from January to June – see Foundation Sport, page 51.

Next step BTEC Level 2 Diploma in Uniformed Public Services or Sport.

Entry requirements None, but you will have an assessment.



Public Services (Uniformed)

Level 2 BTEC Diploma

For students who are interested in a career in the armed forces or emergency services.

Duration 1 year

What will I study? You will participate in teamwork activities, learn codes of discipline and examine the functions of various uniformed services in the UK.

Residentials form an essential part of the course and there will be visits, talks and practical sessions led by guests from the uniformed services. You will improve your health and fitness, learn about public service skills, crime and its effects, take part in adventurous activities and attend emergency incidents.

Next step A career in the uniformed services, eg the fire service, police, armed forces, paramedic or civilian occupations. Alternatively, progress to the BTEC Level 3 Diploma if you achieve a merit or distinction.

Entry requirements At least 2 GCSEs at grade D/grade 3 or above (preferably including English language).

Public Services (Uniformed)

Level 3 BTEC Diploma / Extended Diploma

Equivalent to 3 A Levels, this course is for students who are interested in a career in the armed forces or emergency services or want to progress to university.

Duration 2 years

What will I study? Team leadership, citizenship and diversity, discipline, physical preparation, international institutions, human rights, impact of war, conflict and terrorism, outdoor and adventurous expeditions, crime and its effects on society, responding to incidents, planning and management of major incidents.

The college has close links with Isleworth fire station, giving students the opportunity for “real” public service training. We recommend that all students join a local cadet force.

Next step A degree programme at university or employment in the fire service, police, armed forces or related civilian occupations.

Entry requirements 4 GCSEs at grades A*-C/grades 9-5 or a merit or distinction in Uniformed Public Services at Level 2 with functional skills in English and maths.

Foundation Travel and Business

Level 1 BTEC Certificates

For students with few qualifications. Foundation Learning courses are designed to give you the skills to progress to Level 2.

Duration 1 year

What will I study? Travel and tourism units include the UK tourism industry, UK travel and tourism destinations, preparing for employment in travel and tourism, customer service, locational geography and planning for visits. Business units cover creating business documents, welcoming visitors, working in business administration, recording business transactions and rights and responsibilities. You will study functional skills in English and maths. The course includes visits and work based activities.

You will study Business from September to December, then Travel and Tourism from January to June – see Foundation Business and Travel, page 23.

Next step BTEC Level 2 Travel and Tourism or Business.

Entry requirements None, but you will have an assessment.

Travel and Tourism

Level 2 BTEC Diploma

For students who are interested in a career in travel and tourism.

Duration 1 year

What will I study? UK destinations, customer service, planning simple trips in the UK using different modes of transport, European holiday destinations and developing business skills.

The course includes trips and industry visits and work based activities. You will also improve your English and maths and gain employability skills.

Next step BTEC Level 3 Aviation Operations or Travel and Tourism if you achieve a merit or distinction, or find work in a relevant sector.

Entry requirements At least 2 GCSEs at grade D/grade 3 or above or successful completion of a Foundation Level course with functional skills in English and maths.

Aviation Environment

Level 2 City & Guilds Diploma

For students who are interested in a career in the aviation industry.

Duration 1 year

What will I study? You will learn about the UK's aviation industry and explore different roles at the airport. You will study mandatory units such as health and safety within aviation, aviation security and aviation communication.

Next step BTEC Level 3 Aviation Operations or Travel and Tourism if you achieve a merit or distinction, or find work in a relevant sector.

Entry requirements At least 2 GCSEs at grade D/grade 3 or above or successful completion of a Foundation Level course with functional skills in English and maths.

Travel and Tourism

Level 3 BTEC Diploma / Extended Diploma

Equivalent to 3 A Levels, this course is for advanced students who want a career in the travel and tourism industry.

Duration 2 years

What will I study? Management skills, communication and presentation skills, investigating travel and tourism, the business of travel and tourism, the UK as a destination and customer service. You will also do specialist units such as long haul travel, marketing, hospitality operations and airfares and ticketing.

You may visit the World Travel Market, take part in British Airways workshops and have work experience opportunities.

Next step Employment with a tour operator, travel agent, hotel or hospitality provider; or continue your studies with an HND in Travel and Tourism Management at West Thames College or university degree.

Entry requirements At least 4 GCSEs at grades A*-C/ grades 9-5 or a merit or distinction in a relevant subject at Level 2 with functional skills in English and maths

Aviation Operations

Level 3 BTEC Diploma / Extended Diploma

Equivalent to 3 A Levels, this course is for advanced students who want a career working in an airport or for an airline.

Duration 2 years

What will I study? The UK aviation industry, marketing, customer services, airport and airline commercial operations, airline and airport economics, health, safety and security, ramp handling, airfares and ticketing, the environmental impacts of aviation and preparing for employment.

You may go on trips and visits and take part in British Airways workshops and other work experience opportunities.

Next step Employment in the aviation industry or continue your studies with an HND or degree programme.

Entry requirements At least 4 GCSEs at grades A*-C/ grades 9-5 or a merit or distinction in a relevant subject at Level 2 with functional skills in English and maths.

ESOL (English for Speakers of Other Languages)

Features/

- Trips to London museums and tourist attractions.
- Students progress to vocational courses, GCSEs or A Levels.
- Supportive teachers who help build students' confidence.

Find out more/

 west-thames.ac.uk  020 8326 2020



This course is for young people whose first language is not English and who aim to progress to GCSEs, BTECs and other higher level courses or employment.

There are various levels from beginners upwards, working towards ESOL Skills for Life qualifications. We will interview and assess you to find out which class is best for you.

How to apply

To apply for an ESOL course, please drop in to the college or call **020 8326 2020** to arrange an appointment for an initial assessment.

ESOL for 16-18s

Edexcel ESOL (Skills for Life) and
City & Guilds Functional Skills Maths

This course is for young people whose first language is not English and who have recently arrived in the UK, or who have been at an English school for a short time but have few qualifications.

Duration 1 year

What will I study? English and study skills, humanities, employability, science, maths, IT, citizenship and life in Britain. You will go on trips, participate in enrichment activities, and receive advice on careers, housing, benefits, and finding a doctor or solicitor.

Next step When you are ready you can go on to higher level vocational or academic qualifications at the college. We offer Foundation (Level 1) courses with ESOL support in Business, ICT and Science.

Entry requirements None, but you will have an assessment to establish your level of English and an initial maths assessment. You will also have an interview to find out about your previous educational experience and your hopes for the future.

Supported Learning

Features/

- State of the art equipment and well-designed purpose built areas conducive to learning.
- Sensory room for students with complex or profound disabilities.
- Students take part in community opportunities, for example at St. Paul's Church, Isleworth.
- Partnership working with GlaxoSmithKline and the London Borough of Hounslow.

Find out more/

 west-thames.ac.uk  020 8326 2020



Entry to Vocational Education

Edexcel and City & Guilds Functional Skills and Edexcel PSD qualifications

For young people with mild or moderate learning difficulties who would benefit from support to help make the transition to further learning.

Duration 1 year

What will I study? You will develop your communication, numeracy and interpersonal skills, decision making and problem solving abilities. You will also study 3D design, art and design, catering, enterprise, sport, IT and photography. Work experience and a residential experience are an important part of the course.

Next step Progress to Skills for Work and Life or Level 1 Foundation course. You can also go on to training or employment, Project SEARCH at GlaxoSmithKline or the London Borough of Hounslow or a supported internship.

Entry requirements You will have an interview with the course tutor to be sure the course is right for you.

Skills for Work and Life

Edexcel and City & Guilds Functional Skills and Edexcel PSD qualification, related to employability

This course is for young people with moderate or mild learning difficulties.

Duration 1 year

What will I study? You will build on and develop your communication, numeracy and life skills, and work towards qualifications in English and maths. You will also study art and design, drama, catering, work skills, sport and IT. You will have work experience and a residential experience.

Next step The Progression to Work programme or another college course. You can also go on to training or employment.

Entry requirements You will have an interview with the course tutor to be sure the course is right for you.

Progression to Work

Edexcel Vocational, PSD and Functional Skills qualifications

For students with learning difficulties who wish to get a job or supported employment.

Duration 1 year

What will I study? This course is designed to help you move out of the college environment and into the world of work. It develops your work skills, independent living skills and basic skills in literacy and numeracy. Work experience is an important part of the course. You will go on local visits using public transport and you can get involved in sport and social activities.

Next step Employment opportunities or further vocational study.

Entry requirements You will have an assessment and interview to be sure the course is right for you.

Learning for Independent Living: Continuing Personal Development

Personal progression towards Edexcel Entry Level 1

For students with severe and complex learning difficulties who would benefit from learning in small groups in a supportive environment.

Duration 1-2 years

What will I study? The course is based around the development of communication and life skills and also encourages the development of social and community awareness. We actively encourage independence and making decisions through a range of practical activities such as running enterprises, drama, sports and art. Students have a personal tutor and the use of specialist facilities to meet their individual needs.

Next step Appropriate progression will be discussed with your tutor, careers adviser and relevant social services.

Entry requirements You will have an interview with the course tutor to be sure the course is right for you.

Learning for Independent Living and Work: Skill Builders

Edexcel City & Guilds Entry 1 and PSD qualifications

For young people with learning difficulties who would benefit from learning in small groups in a supportive environment.

Duration 1 year

What will I study? You will learn about your community and build up your confidence for independent living. You will develop your life skills, basic skills, creative and IT skills. You will gain a City and Guilds numeracy and literacy qualification. Work experience is an important part of the course and you will gain enterprise skills in the café business. You will go on local visits using public transport and you can get involved in sport and social activities.

Next step Another college course or supported employment.

Entry requirements You will have an interview with the course tutor to be sure the course is right for you.

Project SEARCH is a supported internship programme for young people with learning disabilities/difficulties, which supports their move from education to employment.



Project SEARCH with Glaxo Smith Kline

Entry Level 3 City & Guilds qualification in Employability Skills (Planning for Progression, Effective Communication, Searching for a Job).

The course is open to anyone between the ages of 17-24 who has learning disabilities / difficulties and who wants to gain the skills and experience needed to secure and keep a paid permanent job and achieve their dream of independent living.

Duration 1 year

What will I study? You will study 3 units linked to your working practices: Getting to know the place of work and study and recognising and building on own personal strengths, Demonstrating positive attitudes and behaviours for learning and work, Looking for suitable jobs and making applications.

You will be based at Glaxo Smith Kline for 5 days a week where you will study your qualification. You will take part in 3 job rotations for the year for example in Security, The Post Room, Meeting Rooms, Restaurant, Reception, Office Admin and IT.

Next step Once you've completed your academic year you will be supported to find paid work.

Entry requirements To be eligible for this project, you must have a learning disability, have the desire to work, have the potential to develop the skills and work required to meet the business needs within Glaxo Smith Kline, be committed to a 5 day week programme, be an independent traveller or be undertaking travel training.

Project SEARCH with the London Borough of Hounslow

Entry Level 3 City & Guilds qualification in Employability Skills (Planning for Progression, Effective Communication, Searching for a Job).

The course is open to anyone between the ages of 17-24 who has learning disabilities / difficulties and who wants to gain the skills and experience needed to secure and keep a paid permanent job and achieve their dream of independent living.

Duration 1 year

What will I study? You will study 3 units linked to your working practices: Getting to know the place of work and study and recognising and building on own personal strengths, Demonstrating positive attitudes and behaviours for learning and work, Looking for suitable jobs and making applications.

You will be based at the London Borough of Hounslow for 5 days a week where you will study your qualification. You will take part in 3 job rotations for the year for example in Security, The Post Room, Meeting Rooms, Restaurant, Reception, Office Admin and IT.

Next step Once you've completed your academic year you will be supported to find paid work.

Entry requirements To be eligible for this project, you must have a learning disability, have the desire to work, have the potential to develop the skills and work required to meet the business needs within the London Borough of Hounslow, be committed to a 5 day week programme, be an independent traveller or be undertaking travel training.

Hayley (pictured bottom left) was a student on the Project SEARCH scheme. Watch a brilliant video about her experience at GSK. <https://www.youtube.com/watch?v=fyxdTdUKI4Y> or scan the QR code with your smartphone.





Welcome to the new Skills+Logistics Centre.

Our new Skills+Logistics Centre in Feltham was officially opened in May 2016.

This £3 million purpose built centre includes a new 225 square metre Logistics building allowing students to run a fully operational warehouse giving them practical experience in a real working environment.

The Skills+Logistics Centre also features new workshops including a state-of-the-art plumbing workspace with fully operational bathroom suite and underfloor heating, a carpentry workshop and a double height space for scaffolding and working at elevation.

On the first floor there is a flexible multi skill space which will be used for all construction trades and an area containing data cabling bays for our new Computer Systems with Data Cabling course (see pages 25 or 71).

Principal, Tracy Aust, comments, *"We are very excited about the new logistics centre. It demonstrates our commitment to update our services to ensure that we meet the changing needs of employers and provide the right training for young people to secure good jobs in our area."*

To build your career in catering, construction, engineering, logistics or motor vehicle mechanics come to our Open Day on Thursday 17 November or register for one of our monthly tours.

Open Days and Tours

Meet our lecturers and students, ask questions and take a tour of our excellent facilities.

See pages 2-3



**West Thames
College London**



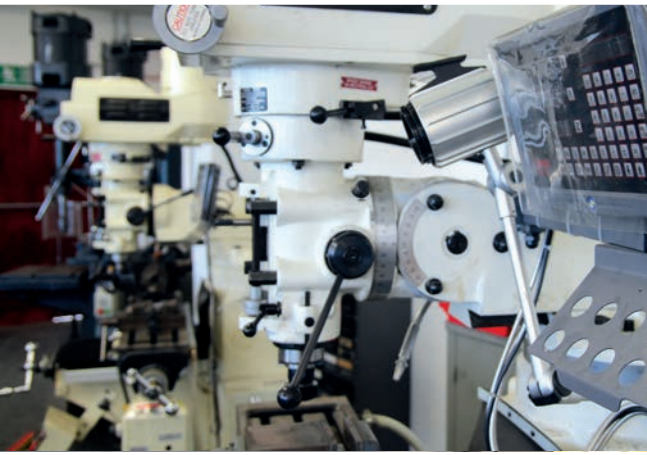
**Skills+
Logistics
Centre**



Local MP, Seema Malhotra at the Centre.



John Holland-Kaye, CEO of Heathrow Airport at the Centre.



Catering

Features/

- Fully equipped industrial kitchen.
- Work experience in top venues such as Marriott and Hilton Hotels, Royal Ascot, BAFTA award ceremony.
- Students take part in industry competitions including Salon Culinaire and WorldSkills UK.
- Demonstrations by head chefs from leading London restaurants.



Find out more/

 west-thames.ac.uk  020 8326 2020



Foundation Catering

Entry 3/Level 1 VRQ /NVQ Diplomas / RSH Essential Food Hygiene / CIEH Basic Health and Safety

An introductory course for students who want a career in professional cookery.

Duration 1 year

What will I study? You will learn to use a variety of ingredients and equipment and develop the skills to produce food in a commercial environment. You will gain qualifications in food hygiene and health and safety, which are essential for the catering industry.

You will also study functional skills in English and maths.

Work experience opportunities may be available.

You will study VRQ Entry 3 from September to December and then NVQ Level 1 from January.

Next step Level 2 Professional Cookery or an Apprenticeship.

Entry requirements None, but you will have an assessment.

Professional Cookery

Level 2 NVQ Diploma / RSH Essential Food Hygiene / CIEH Basic Health and Safety

For students who want a career in professional cookery.

Duration 1 year

What will I study? You will improve your professional skills and gain the techniques required to work in the modern hospitality/catering industry. You will gain Level 2 qualifications in food hygiene and health and safety. You will visit trade shows and enter competitions, and there will be work experience opportunities. You will also improve your English and maths and gain employability skills.

Next step Level 3 Professional Cookery or employment in the catering industry and/or an Advanced Apprenticeship.

Entry requirements At least 2 GCSEs at grade D/grade 3 or above or a pass in a relevant Level 1 qualification.



Construction and Building Services

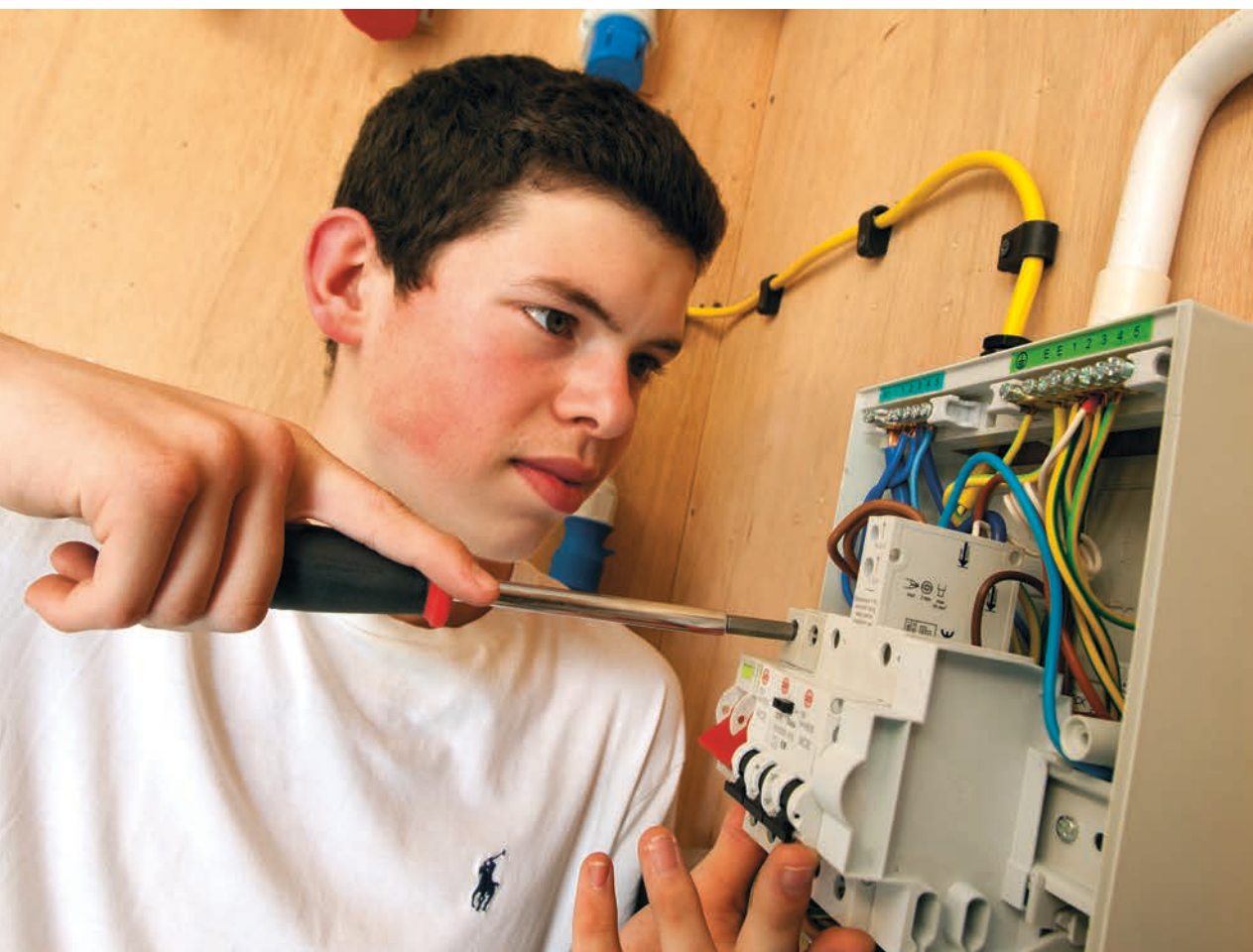
Features/

- Courses take place at the Skills+Logistics Centre in Feltham
- Highly skilled teachers direct from the building trades.
- Work on live briefs and building projects.
- Job and Apprenticeship opportunities with links to Heathrow, Osborne, British Gas and other local employers.



Find out more/

 west-thames.ac.uk  020 8326 2020



Construction (Multi-Skills)

Level 1 BTEC Diploma

For students who want to learn skills for a range of careers in construction.

Duration 1 year

What will I study? You will learn practical skills in brickwork, carpentry, joinery, plumbing, electrical installation and construction drawing. The course has been designed to give you a basic awareness of working in construction and a good understanding of health and safety in construction. It focuses on practical work, although there will also be sessions in the classroom. You will also study functional skills in English and maths.

Next step You may progress to a Level 2 course or Intermediate Apprenticeship, or into employment in the construction sector.

Entry requirements None, but you will have an interview and assessment.

Electrical Installation new

Level 1 City & Guilds Diploma

For students who want to learn the basic skills and knowledge involved in electrical installation.

Duration 1 year

What will I study? You will study wiring and terminals, fabrication techniques, electrical science and technology.

You will have the opportunity to go on trips and hopefully undertake some work experience.

Next step Level 2 Electrical Installation or Level 2 Engineering.

Entry requirements None, but you will have an interview and assessment.

Painting and Decorating

Level 1 Cskills Award

For students who are interested in a career as a painter and decorator.

Duration 1 year

What will I study? The storage of materials and equipment, erecting and dismantling working platforms, working efficiently, preparing the work area, preparing surfaces, applying paint materials by brush and roller, applying standard wallpapers, and applying basic specialist paint finishes.

You may go on trips and visit trade shows such as The Building Exhibition.

Next step Level 2 or 3 Painting and Decorating or find employment or an apprenticeship.

Entry requirements None, but you will have an initial assessment and interview.

Carpentry and Joinery

Level 1 Cskills Award

For students who are interested in a career as a carpenter and joiner.

Duration 1 year

What will I study? You'll learn safe working practices, building methods, construction technology, basic woodworking joints, maintaining and using hand tools, and preparing and using portable power tools.

Next step Level 2 or 3 Carpentry and Joinery or find employment or an Apprenticeship.

Entry requirements None, but you will have an interview and an initial assessment.

Plumbing

Level 1 City & Guilds Diploma

For students who are considering a career as a plumber, electrical or air conditioning engineer.

Duration 1 year

What will I study? You will learn basic skills and knowledge and undertake practical activities. The course covers safe working practices, environmental and sustainability measures, site preparation, above ground drainage, copper, plastic and low carbon steel pipework, installation, repair and maintenance of plumbing systems and plumbing science.

You will also improve your English and maths and gain employability skills.

Next step You can go on to the Level 2 Diploma, start an Apprenticeship or find employment.

Entry requirements None, but you will have an interview and an initial assessment.



Level 1 Painting and Decorating students from the Feltham Skills+Logistics Centre worked with the College's Estates Team on a project to repair and redecorate areas of the Isleworth campus, gaining essential work experience.

Plumbing and Heating

Level 2 City & Guilds Diploma

For students who are interested in a career as a plumber.

Duration 1 year

What will I study? You will learn about the domestic pipework used in plumbing, hot and cold water, central heating pipework, electrical safety, environmental awareness and health and safety in the workplace.

You may go on trips to plumbing exhibitions and visit trade shows.

Next step Level 3 Diploma or an Advanced Apprenticeship.

Entry requirements At least 2 GCSEs at grade D/grade 3 or above or successful completion of the Level 1 Diploma or a relevant foundation course with functional skills in English and maths. You will have an assessment.

Electrical Installation

Level 2 City & Guilds Diploma

For students who are interested in a career as an electrician.

Duration 1 year

What will I study? You will learn about principles of electrical systems, electrical installation technology, health and safety and installation of wiring systems.

You may go on trips and visit trade shows such as The Building Exhibition.

Next step Level 3 Certificate or an Advanced Apprenticeship.

Entry requirements At least 2 GCSEs at grade D/grade 3 or above or successful completion of the Level 1 Diploma or a relevant foundation course with functional skills in English and maths. You will have an assessment.



Engineering

Features/

- Well-equipped machining workshop with CNC machines and CAD facility.
- Links with Nissan, Brompton Bikes and British Airways.
- Guest speakers, eg from Network Rail.
- Students progress to studying mechanical, electrical, aerospace and civil engineering.

Apprenticeships

Find out more/

 west-thames.ac.uk  020 8326 2020



Service and Maintenance Engineering

Level 1 IMI Diploma

An introductory course for students who have an interest in engineering and the automotive industry.

Duration 1 year

What will I study? Routine vehicle maintenance processes and procedures, electrical foundation skills in an engineering environment, introduction to machining engineering materials, introduction to projects in an engineering environment and health and safety. You will take part in a practical engineering or motor vehicle project and study functional skills in English and maths.

We arrange work experience opportunities where possible.

Next step Level 2 Motor Vehicle Maintenance, Engineering or Electrical Installation. You may wish to start an Apprenticeship or work in the industry.

Entry requirements None, but you will have an assessment.

Engineering

Level 2 BTEC First Certificate

For students who want a career in engineering or manufacturing.

Duration 1 year

What will I study? Based in our engineering workshops at the West Thames College Skills+Logistics Centre in Feltham, you will learn about the engineering world, investigating an engineering project, computer-aided engineering, interpreting and using engineering information, mathematics for engineering, and electrical and mechanical science for engineering. Industrial visits will let you see the work that engineers do so you can think about the career you're interested in.

You will also improve your English and maths and gain employability skills.

Next step Level 3 in Manufacturing Engineering or start work or an Apprenticeship.

Entry requirements At least 2 GCSEs at grade D/grade 3 or above including maths at grade C or above or a merit or distinction in a relevant subject at Level 1 with functional skills in English and maths. You will have an interview.

Computer Systems with Data Cabling

Level 2 Diploma

new

For students who are interested in working in the communication / data cabling industry.

Duration 1 year

What will I study? You will study five main units: installing and testing fibre optic cables, installing and testing copper cabling, customer support provision, using the internet and maintaining ICT equipment.

Next step Employment in the thriving communications industry.

Entry requirements 2 or more GCSEs at grade D/grade 3 or above or successful completion of a Level 1 course with functional skills in English and maths.

Manufacturing Engineering

Level 3 BTEC Diploma / Extended Diploma

Equivalent to 3 A Levels, this course is for advanced students who want a career in semiconductor processing, electrical or mechanical production engineering, manufacturing, civil engineering, welding and fabrication or CAD/CAM.

Duration 2 years

What will I study? Based in our engineering workshops at the West Thames College Skills+Logistics Centre in Feltham, you will learn aspects of engineering from the manufacturing sectors including: engineering drawing, CAD, machining, metallurgy, electrical and electronic principles, computer aided manufacturing, principles and applications of electronic devices, further mathematics and the theory of flight.

There will be an engineering project in the second year.

Next step HND or BSc degree at university, or find employment or an Advanced Apprenticeship.

Entry requirements At least 4 GCSEs at Grade A*-C/ grades 9-5 including maths or a merit or distinction in a relevant subject at Level 2 with functional skills in English and maths.

Motor Vehicle

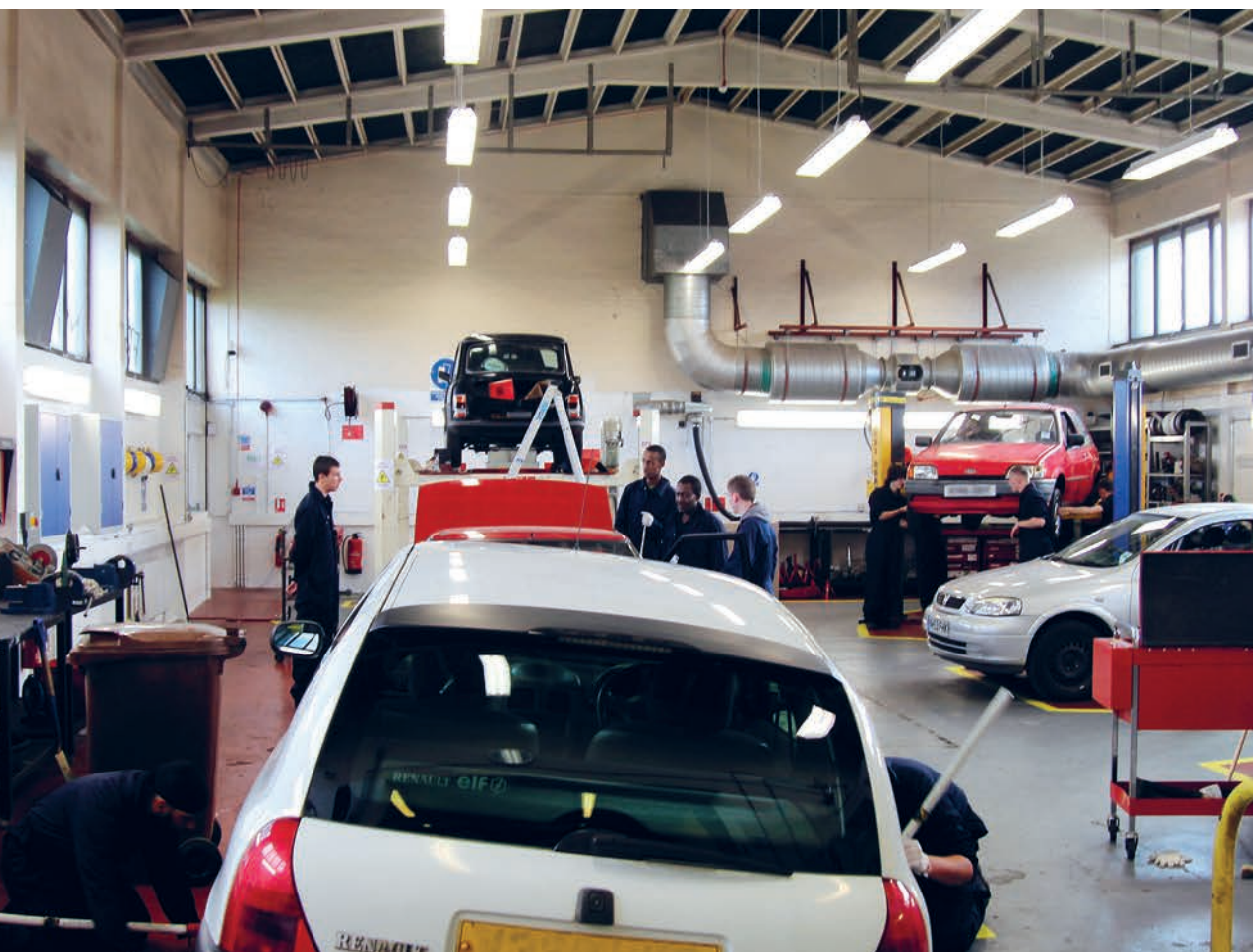
Features/

- Fleet of modern cars and motorbikes available for practical work.
- Fully functional garage workshop with industry standard equipment.
- Careers advice from Halfords guest speakers.
- Progress to careers working for road recovery operations, as MOT testers or garage mechanics.



Find out more/

 west-thames.ac.uk  020 8326 2020



Service and Maintenance Engineering

Level 1 IMI Diploma

An introductory course for students who have an interest in engineering and the automotive industry.

Duration 1 year

What will I study? Based in our specialist workshops at the West Thames College Skills+Logistics Centre in Feltham, you will study routine vehicle maintenance processes and procedures, electrical foundation skills in an engineering environment, introduction to machining engineering materials, introduction to projects in an engineering environment and health and safety. You will take part in a practical engineering or motor vehicle project and study functional skills in English and maths. We arrange work experience opportunities where possible.

Next step Level 2 Motor Vehicle Maintenance, Engineering or Electrical Installation. You may wish to start an Apprenticeship or work in the industry.

Entry requirements None, but you will have an assessment.

Motor Vehicle Maintenance

Level 2 IMI Subsidiary Diploma

For students who want to work in the automotive industry or a related field.

Duration 1 year

What will I study? Based in our specialist workshops at the West Thames College Skills+Logistics Centre in Feltham, you will study tyre, brake, steering and suspension systems, fault diagnosis and routine maintenance, engine fault diagnosis, transmission fault diagnosis, electrical and electronic systems fault diagnosis, health and safety.

We arrange work experience opportunities where possible.

You will improve your English and maths and gain employability skills.

Next step An Advanced Apprenticeship, Level 3 IMI qualification or work in the industry.

Entry requirements At least 2 GCSEs at grade D/grade 3 or above or successful completion of IMI Level 1 with functional skills in English and maths.



Your next step



After your course you will be ready to find a job or start an apprenticeship. If you decide to continue your studies, West Thames College offers a range of Higher Education courses to build on your existing qualifications.

So why stay with us?

- A higher level qualification will improve your chance to progress in the competitive jobs market.
- Our Higher Education courses are delivered by professional lecturers with industry experience and you will receive a high ratio of direct teaching time.
- Our friendly staff will continue to give you all the support you need throughout your course.
- With a two year course you'll only have to pay two years' tuition fees. You will then have the option of progressing directly to the second or final year of university honours degree course.

To find out more see our website or call **020 8326 2020** to request a copy of our High Prospects Guide.

Our HE courses

HNCs

Higher National Certificates *1 year*

- Software and App Development
- Health and Social Care
- Applied Biology
- Production Media Makeup
- Dance
- Travel and Tourism Management

HNDs

Higher National Diplomas *2 years*

- Applied Biology
- Software and App Development
- Creative Media Production (TV and Film)
- Music Production
- Performing Arts
- Dance
- Specialist Makeup

Foundation Degrees

- FdA Early Years *2 years*

Teaching in the Lifelong Learning Sector

- Teaching English Language to Adults (CELTA)
- Diploma in Education and Training (DET) *2 years*

Higher Level or Degree Apprenticeships

Level 4

- Broadcast Production

Level 5

- Care Leadership and Management

Level 6 (degree) with University of West London

- BA (Hons) Chartered Manager Degree
- BSC (Hons) Digital and Technology Solutions Degree

Apprenticeships are available at different levels - see pages 8-9 for our Level 2/3 offering.

See west-thames.ac.uk for an up-to-date list of our current apprenticeships and vacancies.



Fees and financial assistance

Courses are free for 14-18 year olds

There are no tuition or exam fees for UK/EU students on further education courses who start their course when they are under 19 years. However, students taking re-sits may be required to pay the exam registration fee.

DBS Check

If your course has the **DBS** symbol, you will need to pay for a Disclosure and Barring Service (DBS) check before you are accepted onto the course.

Materials

On some courses there will be a charge for specialist kits and materials. Please ask for details at enrolment.

Financial Support

We may be able to offer support to help pay for any course-related expenses if students can demonstrate financial hardship. Ask for our Student Guide to Financial Support, or talk to a member of staff at the course interview.

Please note Fee information is subject to change. For latest information on fees, concessions, bursaries and loans please see our website or email info@west-thames.ac.uk.

Oystercards

Full-time students and apprentices living in London may be eligible for free or discounted travel. For further information visit tfl.gov.uk.

Free College Meals

You may be entitled to free college meals if you or your family are on a low income. Please ask for details at enrolment.

College Nursery

Our college nursery offers full and part-time places for children aged 3 months to 5 years, providing a safe and stimulating learning environment for children while their parents study.

Funding and subsidies may be available, but places are limited. For an application form and more information please contact the nursery on **020 8326 2318**.

Open Days and Tours

Meet our lecturers and students, ask questions and take a tour of our excellent facilities.

See pages 2-3

How to apply

Apply online at west-thames.ac.uk

Simply select the course you want to study, click **Apply Now from the course factsheet, then complete and submit the online form.**

You can apply online from October 2016 until the end of July 2017.

Apply by post

Download the application form from our website or pick one up from our Information Centre. Please return the completed form to:

Freeport Plus RTJX-LSAT-GYJR
Admissions
West Thames College
Isleworth
Middlesex
TW7 4HS



Latest news and alerts

Like our Facebook page **WestThamesCollege**
Follow us on Twitter @**WestThames** or Instagram **west_thames**.

Your interview

If your application is successful we will invite you to attend an interview, giving you the opportunity to ask questions about the course. Some courses may require you to bring a portfolio of your work with you or to do an audition. You should receive notification of an interview within 28 days of submitting your application. We usually interview between November and June for courses starting in September.

Applications

If you are a late applicant (applying in August/September), please come to the college during our open enrolment sessions in August 2017. You will then be able to have an interview and enrol at the same time (subject to places being available). Enrolment dates will be advertised on our website.

Disability Support

If you have a physical, mental health or sensory impairment and/or learning disability, please let us know when you apply so that we can make arrangements for you.

Further Information

Detailed factsheets for all our courses can be printed from our website **west-thames.ac.uk**.

If you are not sure which course is right for you or you need advice and guidance before you apply, please call **020 8326 2020**.

Index

A

Accounting 23
Acting 41
Animation 33
Applications 77
Applied Science 29
Apprenticeships 8-9
Art & Design 31
Aviation Operations 55

B

Beauty 47
Brentford FC 51
Business 23

C

Carpentry & Joinery 67
Catering 65
Childcare 27
Computing 25
Construction 67-69
Cookery 65
Creative & Digital Technologies 35
Creative Arts Festival 16-17
Creative Media 37

D

Dance 43
Data Cabling 25/71
Drama 41

E

Early Years Care 27
Electrical Installation 67-68
Engineering 71
ESOL 57

F

Fees 76
Football 51
Foundation Degrees 75

G

Games Design 33

H

Hairdressing 45
Health & Social Care 27
Higher Education 74-75
How to Apply 77

I

- ICT 25
- Independent Living 59
- Interactive Media 35
- Interviews 77
- IT 25

L

- Learning Support 20

M

- Makeup 49
- Manufacturing 71
- Media 35-37
- Motor Vehicle 73
- Music 39
- Music Technology 39

N

- Networking 25
- Nursery 76

O

- Open Days 2-3

P

- Painting & Decorating 67
- Performing Arts 41
- Plumbing 67-68
- Project SEARCH 61
- Public Services 53

S

- Science 29
- Skills+Logistics Centre 62
- Software Development 25
- Specialist Makeup 49
- Sport 51
- Student Life 10-15
- Supported Learning 59-61
- Support Services 20
- Systems Support 25

T

- Teaching 75
- Television & Film 37
- Theatrical Makeup 49
- Travel & Tourism 55

U

- Uniformed Public Services 53

Also see our **Adult and Higher Education** course guides. Order your copy online at west-thames.ac.uk or call **020 8326 2020**.

Special thanks all the staff and students at West Thames College who helped with the production of this prospectus.

Design/Production: West Thames College Marketing team.
© West Thames College 2016
Print: Belmont Press

Please visit our accessible website for more information about the college, our facilities and all our courses.



You will be able to increase the font size, change the background colour or use speech browser software as necessary. To request this publication in large text and other formats, please call **020 8326 2020**.



Travel




Skills+Logistics Centre/ Feltham

77 Boundaries Road TW13 5DR

-  **Rail** Feltham Station (10 minutes walk).
-  **Bus** 285 and 490 buses stop on Uxbridge Road.

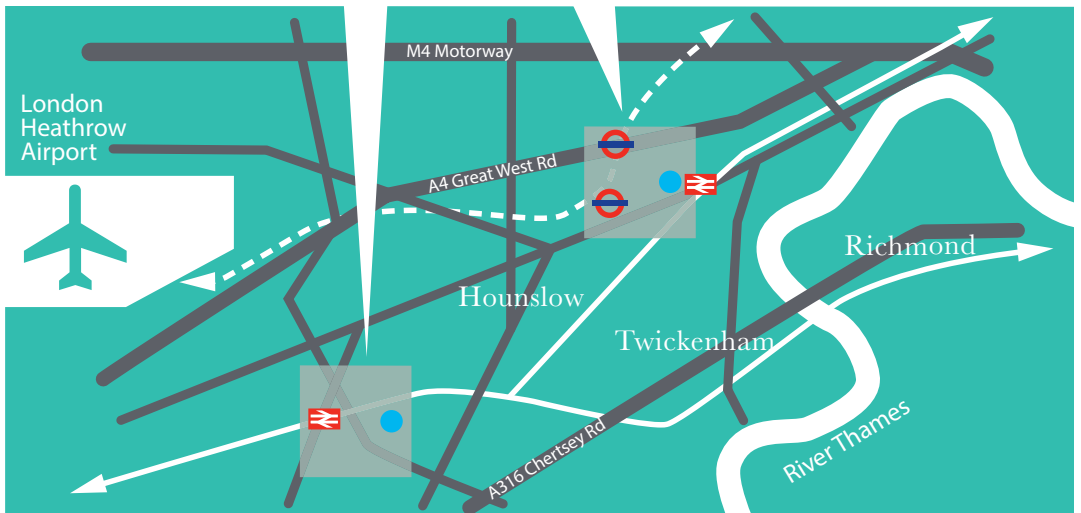
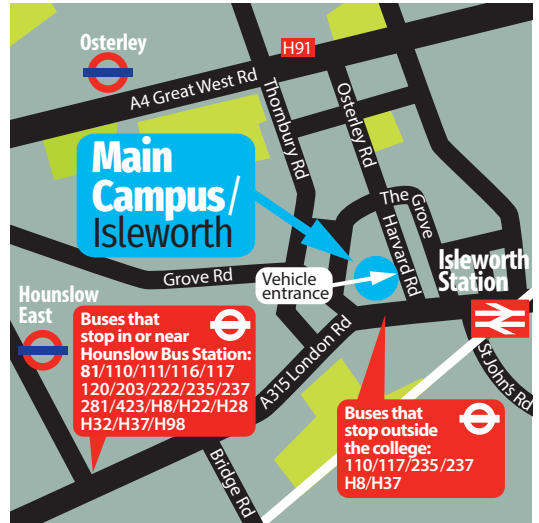
Main Campus/Isleworth

London Road TW7 4HS

-  **Rail** Isleworth Station (5 minutes walk).
-  **Tube** Osterley or Hounslow East Stations (Piccadilly Line), then 10-15 minutes walk, or by bus from Hounslow Bus Station.
-  **Bus** 117, 235, 237, E8 and H37 buses stop outside the college.



Car parking Feltham: Limited spaces. Isleworth: Part-time evening and disabled students only.



Giving you the skills to achieve your dreams.

020 8326 2020

west-thames.ac.uk

