

with Outstanding Features 2021

Ofsted
Good
Provider



One of the
TOP 3
COLLEGES
in London

FULL TIME COURSES 2023

For 16-18's



[west-thames.ac.uk](https://www.west-thames.ac.uk)



020 8326 2000

Contents

Welcome to West Thames College	4	Next steps	60
About us	6	T-Levels	62
Open Days	6	Apprenticeships	64
Why West Thames College	8	Fees and financial assistance	65
Programme of study	9	West Thames College in the Community	66
Your career	10	Index	68
Student Union	11	Accessibility	70
Campus life	12	Travel	Inside back cover
Help and support	14		
How to apply	16		
Using this guide	17		
Course listings	18		

Entry Requirements Guide

Level 1

A successful interview. You will also need to complete an assessment for some courses.

Level 2

2 GCSEs at grade D/3 or above. Level 1 function skills English and Maths.

Level 3

At least 4 GCSEs at grade A* - C/9-4, a merit or distinction at Level 2 with functional skills in English and Maths.



Courses



MAIN CAMPUS ISLEWORTH

Business 18

Computing and ICT 20

Health, Social Care and Childcare 22

Science 24

Art and Design 26

Animation and Games Design 28

Creative and Digital Technologies 30

Media 32

Music 34

Performing Arts and Dance 36

Hairdressing 38

Beauty Therapy 40

Specialist Makeup 42

Sport 44

Uniformed Public Services 46

Travel, Tourism and Aviation 48

ESOL 50

Supported Learning 52



SKILLS+LOGISTICS CENTRE / FELTHAM

Construction and Building

Trades 54

Engineering 56

Motor Vehicle 58



**West Thames
College** London



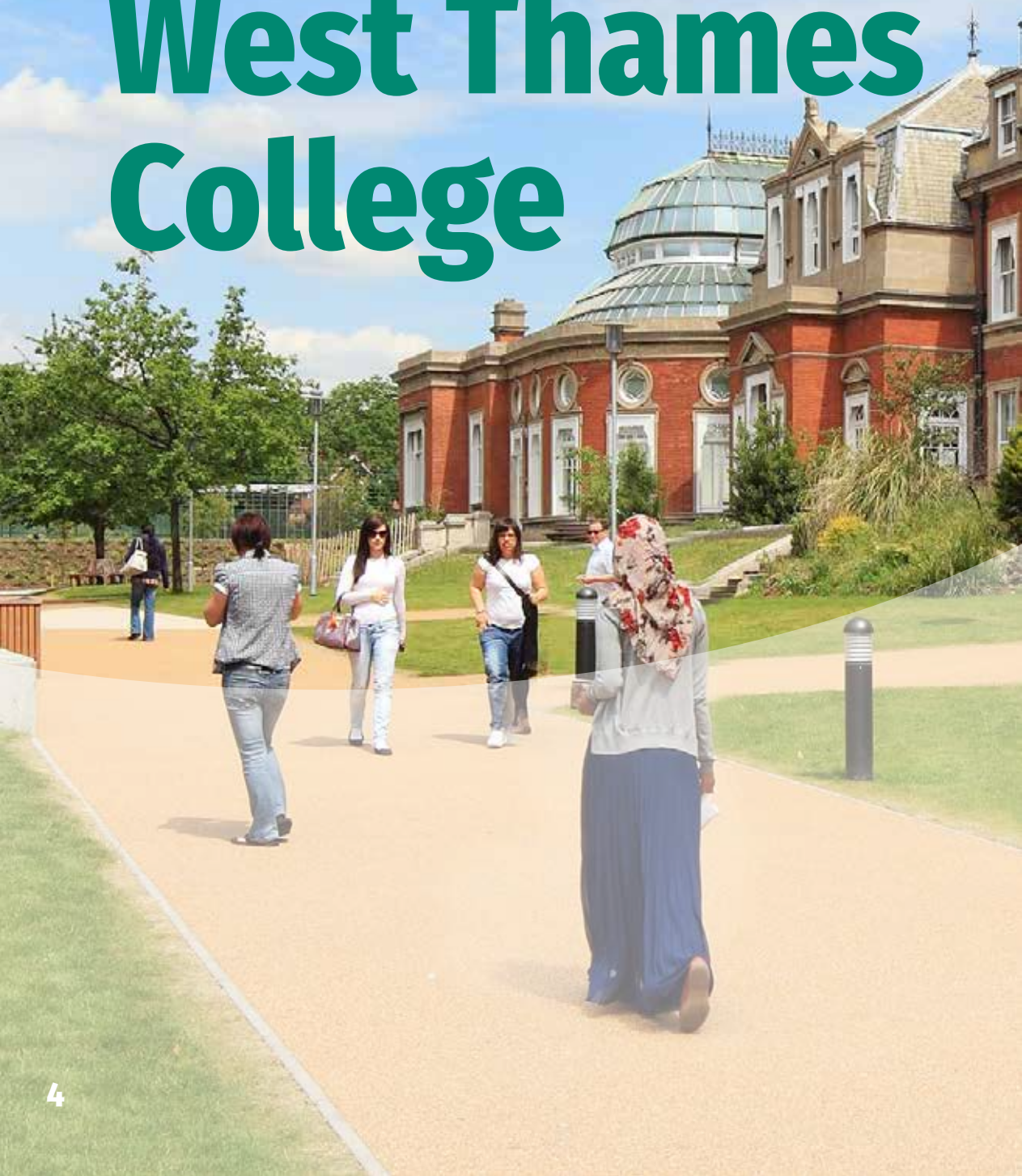
**Skills+
Logistics**
Centre



For some courses you will be required to show a portfolio or have an audition.

See our website
west-thames.ac.uk for
specific course entry requirements.

Welcome to West Thames College



We are a successful, vibrant college of further and higher education.

Whether you are a school leaver or an adult looking to update your skills, we have a range of courses and apprenticeships to give you the skills and experience you need to fulfil your ambitions.

- Our vocational courses are taught by industry professionals.
- Our strong links with employers provide access to industry leaders and excellent work experience opportunities.
- Our state-of-the-art facilities and workshops at our main Isleworth campus and at our Skills+Logistics Centre in Feltham provide excellent learning environments.

Above all, our friendly and committed staff will give you all the support and guidance you need to succeed. The achievement rates of our students are high - above the national average - which we are incredibly proud of. Our students go on to do amazing things either in the career of their choice or at one of the nation's prestigious universities.

Your journey to fulfilling your dreams is just beginning and we look forward to welcoming you to West Thames College.

Tracy Aust
Principal

See West Thames College for yourself

There's no better way of deciding whether we offer the right course for you than by participating in one of our **Open Days**. See pages 6-7 for details.

Also see our other guides

Part time, full time & evening courses for adults

Higher Education

View online at **west-thames.ac.uk/course-guides** or call **020 8326 2000**.

About us

West Thames College has two campuses
- our main campus in Isleworth and our Skills+Logistics Centre in nearby Feltham.

Main Campus / ISLEWORTH

The main campus has a friendly, welcoming atmosphere and combines bright, modern purpose built buildings with the historic grandeur of Spring Grove House - once the home of Sir Joseph Banks, who sailed the world with Captain Cook. Students benefit from a range of facilities including professional salons, theatre, dance studios, music recording & TV studios, sports facilities and much more. Our extensive range of courses cover pre-entry to higher education, offering a range of opportunities for progression.

Isleworth OPEN DAYS

For all courses except
construction, engineering and
motor vehicle.

2022

Sat 12 Nov 10am-1pm

2023

Wed 1 Feb 5-7pm

Sat 11 Mar 10am-1pm

Wed 21 Jun 5-7pm

6 Call **020 8326 2000** for help and advice regarding our courses and support services.





**See our excellent facilities
and meet our course
leaders on an Open Day.**

Skills+Logistics Centre FELTHAM

Our £3 million purpose-built centre provides the right training that young people need to secure jobs within their chosen profession.

It includes multiple workshops and workspaces that create realistic work environments, allowing students to develop the specific skills required within the industry. You will be taught by real industry professionals, who will pass on their substantial skills and knowledge.

**Book your place:
[west-thames.ac.uk/
opensdays](https://west-thames.ac.uk/opensdays)**

Feltham OPEN DAYS

For construction, engineering,
Logistics and motor vehicle
courses only.

2022

Sat 12 Nov 10am-1pm

2023

Tues 7 Feb 5-7pm

Sat 11 Mar 10am-1pm

Tues 27 Jun 5-7pm

See our website
west-thames.ac.uk for
information about the
college and our courses.

Why West Thames College?

Start
HERE
Go **FAR**



One of the
TOP 3
COLLEGES
in London*

* Based on overall performance for students aged 16-18 across all levels in 2018-19.



HIGH
Achievement
AND
Progression
rates



Great
WORK
EXPERIENCE
Opportunities



**AMAZING
FACILITIES**



100+
COURSES
IN 24 COURSE
AREAS



Courses Taught by
Industry
PROFESSIONALS

Programme of study

At West Thames College, you choose one core vocational subject. Alongside this, your programme of study will include:

Employability

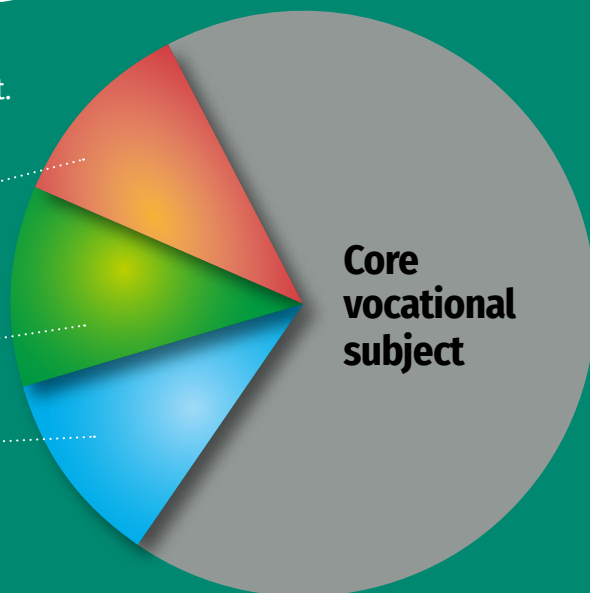
such as teamwork and problem solving to get you job-ready

English and/or maths

depending on your GCSE results

iLearn

independent learning to improve digital and study skills, collaborate with others and develop positive autonomous learning habits



Work with LEADING EMPLOYERS

West Thames College prides itself on its strong links with employers.

We work with a wide range of companies to provide excellent work experience opportunities as well as providing events such as Aspire. Aspire brings employers on site to run a series of masterclasses and workshops, further developing our students for their next step.

BRITISH AIRWAYS

London Borough of Hounslow



OTIS



Heathrow
Making every journey better



Your career

Check out the videos below which focus on the successes of former students and how their time at the college has helped them embark on rewarding careers.

Use the **QR codes** to directly open the videos or you can find links to them on the News pages of our website: west-thames.ac.uk/news.



Video production by the Film Farmers:
thefilmfarmers.co.uk



Nadeem Chattha

Nadeem came over to London from Germany in 2004. He joined an ESOL class at the college and progressed onto other courses, finally leaving to study for a degree. He now works as a Senior Systems IT Engineer at the college.



Renee Mudhar

Renee studied Travel & Tourism at the college and went on to do an apprenticeship with the London Borough of Hounslow. She found the apprenticeship really valuable in helping her move forward to her chosen career of becoming a lawyer.



Francesca Sherwood

Francesca studied Beauty Therapy at the college and went on to open her own salon, True Beauty Salon & Medispa, based in Twickenham. She has used the skills she learned on her course to establish her award-winning business



Sabina Enu-Kwesi

After studying Manufacturing at the college, Sabina embarked on an apprenticeship with the Otis Elevator Company, eventually becoming a full-time employee. She is continuing her education with a degree in Business Psychology at Birkbeck, University of London.

Your College Your voice

Join Student Voice



There are several ways to get more involved with the college:

Student Ambassadors

Student Ambassadors help promote the college to prospective students and their parents - assisting at open events, award ceremonies, parents' evenings and other such occasions.

Student Governors

Student governors are elected by their peers to put the opinions of students to the college's governing body. They work with the other governors to improve education and teaching at West Thames.

The Student Union

You will automatically become a member of the Student Union which promotes the interests and views of West Thames students. It is run by students for students so you can also be elected to a leadership position on the Student Union Executive Team.

Course Representatives

Course Representatives give feedback from students on their course and work with curriculum managers to make improvements and help resolve any issues.

**By getting involved you can help make a real difference at
West Thames College.**



Campus life

Life isn't just about learning.

West Thames College is a fun place to be, with plenty of activities and events throughout the year.

Sports

Play football, badminton, netball, basketball, cricket, table tennis, volleyball, Zumba, boxing and much more in our sports hall and outdoor pitches. We take our sport seriously – our successful college teams play in competitive leagues and regularly win trophies.



Student common room

Watch music, sport or films on the plasma TV screens, go online, play pool, table tennis, table football and other games, or just meet with friends in our common room and café areas.



Gym

Our gym is equipped with treadmills, cycling and rowing machines, cross trainers, resistance machines and weights to keep you fit and toned.



Hair and Beauty salon

Get thoroughly pampered with a beauty treatment or new hairstyle and buy professional products for a fraction of the normal cost. For bookings and latest offers please call the Salon on 020 8326 2201.



Student activities

Get involved in a variety of clubs and societies, to build on your existing interests or to explore new ones. You can take part in tournaments, talent shows, trips, competitions, fundraising activities and cultural awareness events, such as Black History Month and World Aids Day.





Help and support

You will have access to a range of support services throughout your time at the college.

We also have an excellent reputation for the additional support we give to our students.

Student Learning Advisers

Tutors who you will meet regularly to monitor your progress, attendance and assist with any issues. They can also help you access specialist support services.

Careers Service

Our team of independent careers advisers will help you make the right decision for your future and identify the skills you need to succeed.

Learning Support

Specialist teachers provide support outside the classroom to help improve literacy and numeracy, study skills and tackle assignments.

We believe all students should have fair and equal access to their chosen learning programme and all aspects of college life. If you have a disability or learning difficulties, we will make reasonable adjustments to ensure that college facilities are accessible and that all your learning and support needs are met.

Employability Advisers

These advisers will help you prepare for the world of work and equip you with the skills employers need.

Counselling

Talk through problems or stressful situations in complete confidence with a professional counsellor.

Learning Resources Centre

A range of services to support your studies including computers, study spaces, online and offline resources and helpful staff.

Welfare and Support

Contact our team for practical financial advice and help with bursaries and entitlements.

See our website [west-thames.ac.uk/help-and-support](https://www.west-thames.ac.uk/help-and-support) or call 020 8326 2000 for further information about our range of support services.

How to apply

Apply online at
west-thames.ac.uk

Location
Isleworth

Start Date
09/09/2023

Mode
Full Time

Apply

Select the course you want to study, click the **Apply** button and complete the form.

After we receive your online application, we'll contact you to invite you into the college.

Some courses may require you to bring a portfolio of your work with you or to do an audition – we will let you know if you need to do this.

or apply in person

Pop into our friendly Information Centre to apply in person, receive advice or book an appointment. Please call us on **020 8326 2000** to check the opening times of the Centre before setting out.

If your application is successful, the college will get in touch to let you know what happens next.

Visiting the college

As part of the application process you will be invited to visit the college. This is a chance to find out more about your course and see our workshops and classrooms. You can also come to one of our Open Days to tour our great facilities and ask questions about our courses, or visit us during Creative Arts Season in May and June to see the fantastic work our students do on their creative industries courses.

Disability support

If you have a physical, mental health or sensory impairment and/or learning disability, please let us know when you apply so that we can make arrangements for you.

Further Information

Find more information about all of our courses on our website **west-thames.ac.uk**. If you are not sure which course is right for you, please call **020 8326 2000** to arrange an appointment with a careers adviser.

Entry Requirements

Level 1 A successful interview. You will also need to complete an assessment for some courses.

Level 2 2 GCSEs at grade D/grade 3 or above. Level 1 functional skills English and Maths.

Level 3 At least 4 GCSEs at grade A*-C/9-4, a merit or distinction at Level 2 with functional skills in English and Maths.

*For some courses you will be required to show a portfolio or have an audition. See our website **west-thames.ac.uk** for specific course entry requirements.*

Using this guide

Courses are listed by Level, with potential West Thames College course progression, including our Higher Education offer.

Careers/Salary expectations

Advertising accounts managers
and creative directors

Up to **£42k**

Web design and development
professionals

Up to £33,300

Graphic designers

Up to £30,200

Each course area has
examples of career/
job opportunities and
typical salaries.

LEVEL 1

Digital Arts, 1 year

LEVEL 2

Digital Arts (Introduction to
Animation and Games), 1 year

LEVEL 3

Creative and Digital Design, 2 years
Animation and Games Design, 2 years

Course progression at West Thames

Progress to an appropriate course at
a higher level.

Using the QR code

Course details

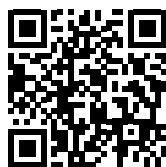
See our website west-thames.ac.uk/courses

Fast track to our Course Explorer by scanning this
QR code with your smartphone.

1 Open your phone's camera

2 Hover over the QR code

3 Choose from our range of subjects that appear on
this page.





Business

Studying a business course at college can be the first step towards a career in areas such as sales, marketing and public relations (PR), accounting, management or human resources (HR).

Sales careers include visual merchandising and working in a buying/purchasing department. Marketing and PR involves promoting the products and the positive image of the company itself. Management and HR help to keep an organisation running efficiently, including hiring and retaining the right people.

About our Business courses

Our courses enable you to explore these roles, learn about the business environment, and decide where your own interests lie.

You will engage with businesses such as Coca-Cola and Goldman Sachs and go on industry visits to the Houses of Parliament, Heathrow Airport or Sky.

Student success

Zobia Baqi / Computing



Zobia studied for an HND in Computing at the college in 2011, then completed her degree at Roehampton University before joining Goldman Sachs as a consultant in client reporting. She was invited back to the college to speak at a recent HE awards ceremony.

Careers/salary expectations

Business and financial project management professionals

Up to £52,000

Management consultants and business analysts

Up to £48,400

Leisure and travel service occupations

Up to £25,500

See our website west-thames.ac.uk/courses for more detailed course information. Use the QR code on the opposite page for fast access.

Call **020 8326 2000** for help and advice regarding our courses and support services.

**LEVEL
1**

Business and Travel with ESOL

1 year

Foundation Business and Travel

1 year

**LEVEL
2**

Business

1 year

Gateway Business

1 year

**LEVEL
3**

Business

2 years

Principles of Business and Administration

1 year

Course details

See our website
west-thames.ac.uk

Fast track to our Course Explorer by scanning this QR code with your smartphone.

1 Open your phone's camera

2 Hover over the QR code

3 Choose from our range of courses that appear on this page.



Course progression at West Thames

Take an apprenticeship or progress to an appropriate course at a higher level.

Entry requirements

LEVEL 1 A successful interview. You will also need to complete an assessment for some courses.

LEVEL 2 2 GCSEs at grade D/3 or above. Level 1 functional skills English and maths.

LEVEL 3 At least 4 GCSEs at grade A*-C/9-4, a merit or distinction at Level 2 with functional skills in English and maths.

For some courses you will be required to show a portfolio or have an audition.
See our website **west-thames.ac.uk** for specific course entry requirements.



Computing and ICT

From smartphones and Wi-Fi to hashtags and instant messaging, technology dramatically affects the way we communicate.

If you're interested in supporting people who use computers, understanding how digital information is spread, or solving problems with technology, then consider one of our courses in Computing and ICT.

About our Computing and ICT courses

You will learn in specialist ICT suites, take part in work experience and visit local businesses. West Thames College is a certified Cisco Academy, giving you the chance to gain additional qualifications which are in high demand in the industry. You can get involved in live briefs and competitions, such as Worldskills UK, and we have strong links with local businesses such as Sky and Cisco that offer WEX and Apprenticeship opportunities.

Student success

David Hollands / ICT



David achieved the highest ICT exam results in the whole country whilst studying at West Thames College, despite leaving school with no GCSEs. He gained a First Class Honours Degree in Computer Science at Royal Holloway University and is now a manager in Data Analytics at KPMG UK.

Careers/salary expectations

IT and telecommunications

Up to £70,000

IT business analysts, architects and systems designers Up to £48,400

IT operations technicians

Up to £33,300

See our website [west-thames.ac.uk/courses](https://www.west-thames.ac.uk/courses) for more detailed course information. Use the QR code on the opposite page for fast access.

Call **020 8326 2000** for help and advice regarding our courses and support services.

LEVEL
1

ICT Systems Support PC Maintenance

1 year

ICT Systems Support - PC Maintenance with ESOL

1 year

LEVEL
3

Computing

2 years

Networking and Cybersecurity

1 year

Course progression at West Thames

Take an apprenticeship or progress to an appropriate course at a higher level.

Entry requirements

LEVEL 1 A successful interview. You will also need to complete an assessment for some courses.

LEVEL 2 2 GCSEs at grade D/3 or above. Level 1 functional skills English and maths.

LEVEL 3 At least 4 GCSEs at grade A*-C/9-4, a merit or distinction at Level 2 with functional skills in English and maths.

For some courses you will be required to show a portfolio or have an audition.

See our website west-thames.ac.uk for specific course entry requirements.

LEVEL
2

Information and Creative Technology

1 year

Digital and IT Skills

1 year

Course details

See our website
west-thames.ac.uk

Fast track to our Course Explorer by scanning this QR code with your smartphone.

1 Open your phone's camera

2 Hover over the QR code

3 Choose from our range of courses that appear on this page.



T-Levels

Looking for a qualification with a built-in work placement? Find out more about our brand new T-Levels on page 62.



Health, Social Care and Childcare

Working in health and social care or childcare is a great way to make a difference, by helping people individually or driving improvements in society.

These careers are emotionally challenging but can also be highly rewarding. To thrive you must be able to build strong relationships with others, your colleagues, patients and service users.

About our Health, Social Care and Childcare courses

Our courses have high success and progression rates and you will develop the knowledge and skills relevant to the Health and Social Care industry.

You will undertake work placements in health and care settings, such as aged care facilities, pharmacies, children's nurseries and care homes for people with disabilities so you can progress into industry. Alternatively we have strong links with a number of universities if you wish to progress to a degree programme after your course.



Careers/salary expectations

Social services managers and directors

Up to £44,000

Social Workers

Up to £37,500

Adult Nurse

Starting at Band 5 £25,655

See our website [west-thames.ac.uk/courses](https://www.west-thames.ac.uk/courses) for more detailed course information. Use the QR code on the opposite page for fast access.

Call **020 8326 2000** for help and advice regarding our courses and support services.

LEVEL 1

NCFE CACHE Certificate in Introduction to Health, Social Care and Children's and Young People's Settings

1 year

LEVEL 3

NCFE CACHE Extended Diploma in Health and Social Care

1 year

T-Levels

Looking for a qualification with a built-in work placement? Find out more about our brand new T-Levels on page 62.

LEVEL 2

NCFE CACHE Extended Diploma in Health and Social Care

1 year

Course details

See our website
west-thames.ac.uk

Fast track to our Course Explorer by scanning this QR code with your smartphone.

- 1 Open your phone's camera
- 2 Hover over the QR code
- 3 Choose from our range of courses that appear on this page.



Health and Care



Childcare

Entry requirements

LEVEL 1 A successful interview. You will also need to complete an assessment for some courses.

LEVEL 2 GCSEs at grade D/3 or above. Level 1 functional skills English and maths.

LEVEL 3 At least 4 GCSEs at grade A*-C/9-4, a merit or distinction at Level 2 with functional skills in English and maths.

For some courses you will be required to show a portfolio or have an audition.

See our website **west-thames.ac.uk** for specific course entry requirements.



Science

There are great careers available if you have an interest in science.

You could work in the life sciences, such as pharmaceuticals, biotech or crop research, chemical development and manufacturing, food production and development, monitoring various aspects of the environment, veterinary medicine, or use forensic science in the field of archaeology.

About our Science courses

Our laboratories have specialist equipment including DNA analysis equipment and an advanced optical telescope, and we have links with local plant science industries.

You will attend workshops on topics such as radiography, physics and electricity, have work experience opportunities, visit museums, universities and attend conferences, and take part in National Science Week.

Student success

Ahmad Dehghani / Applied Science



Ahmad was named national winner for the Space Zone category in I'm a Scientist, Get Me Out of Here in 2011. He received a triple distinction in his National Diploma, went on to study radiography at the University of Cumbria and now works as a radiographer for the Hillingdon Hospitals NHS Foundation Trust.

Careers/salary expectations

Natural and social science professionals
Up to £38,000

Natural and social science professionals
Up to £38,500

Laboratory technicians
Starting at Band 5 £26,000

See our website west-thames.ac.uk/courses for more detailed course information. Use the QR code on the opposite page for fast access.

Call **020 8326 2000** for help and advice regarding our courses and support services.

LEVEL
2

OCR Cambridge Technical Certificate in Applied Science

1 year

Course progression at West Thames

Take an apprenticeship or progress to an appropriate course at a higher level, including our **Higher Education**:

Applied Biology HNC/HND

LEVEL
3

Pearson BTEC National Extended Diploma in Applied Science

2 years

Course details

See our website
west-thames.ac.uk

Fast track to our Course Explorer by scanning this QR code with your smartphone.

1 Open your phone's camera

2 Hover over the QR code

3 Choose from our range of courses that appear on this page.



Entry requirements

LEVEL 1 A successful interview. You will also need to complete an assessment for some courses.

LEVEL 2 GCSEs at grade D/3 or above. Level 1 functional skills English and maths.

LEVEL 3 At least 4 GCSEs at grades A*-C/9-4, one of which must be in Science, a merit or distinction at Level 2 Science. You must also have at least a pass at grade D/3 for GCSE maths.

For some courses you will be required to show a portfolio or have an audition.

*See our website **west-thames.ac.uk** for specific course entry requirements.*



Art and Design

Careers in Art and Design can include areas such as prop design, web design, packaging design for the food and drink industry, or fine arts such as jewellery design, sculpture, painting and photography.

You can work on a freelance basis, as part of a design agency, or in the design department of a large company.

About our Art and Design courses

Our courses are accredited by the University of the Arts London, one of the top universities in the world for art and design.

We have well-equipped specialist studios for photography, fine art, 3D design, fashion and graphics, and our teachers are practising designers with industry experience.

Students exhibit their work to the public at our annual Creative Arts Festival and progress to top universities and art schools such as Goldsmiths and Central St Martin's.

Student success

Manny Melotra / Photography



After his West Thames College course, Manny progressed to a BA in Commercial Photography at the University of West London and then a Masters in Commercial Photography at Arts University Bournemouth. He won the **Best Individual Photographer** award from Free Range in 2017 and had his first solo exhibition at The Old Truman Brewery.

Careers/salary expectations

Arts officers, producers and directors

Up to £43,000

Graphic designers

Up to £30,200

Artists

Up to £28,600

See our website [west-thames.ac.uk/courses](https://www.west-thames.ac.uk/courses) for more detailed course information. Use the QR code on the opposite page for fast access.

Call **020 8326 2000** for help and advice regarding our courses and support services.

LEVEL
1

Creative Design

1 year

LEVEL
2

Creative Design

1 year

LEVEL
3

Creative and Digital Design

2 years

LEVEL
4

Foundation Diploma in Art and Design

2 years

ual: university
of the arts
london

These FE courses are accredited by the University of the Arts London Awarding Body, the only specialist art, design and creative industries awarding organisation in England.

Course details

See our website
west-thames.ac.uk

Fast track to our Course Explorer by scanning this QR code with your smartphone.

1 Open your phone's camera

2 Hover over the QR code

3 Choose from our range of courses that appear on this page.



Entry requirements

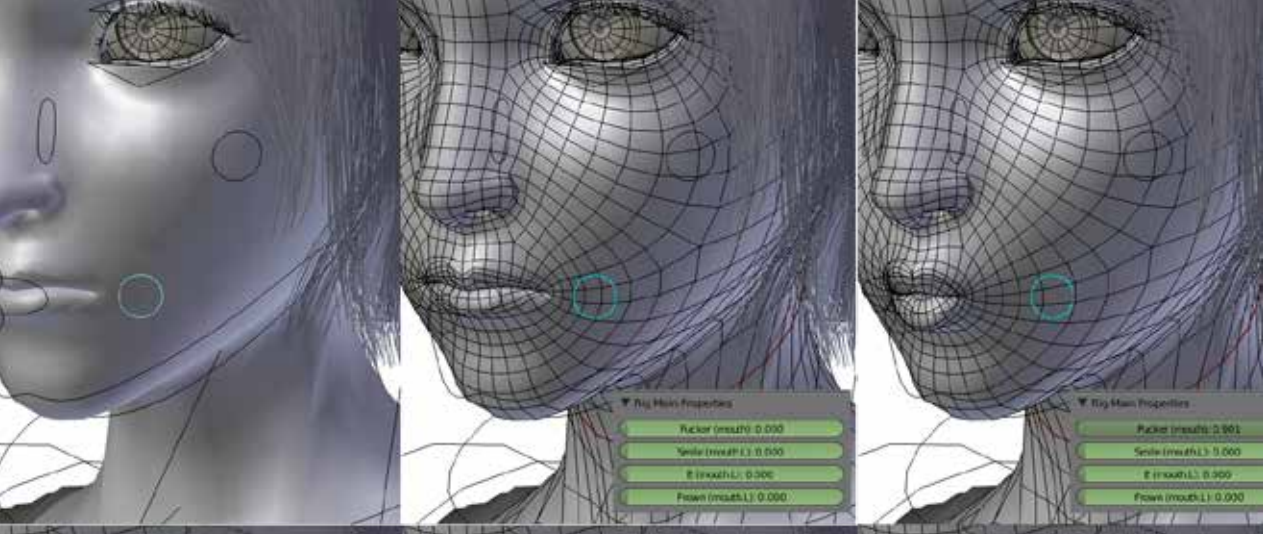
LEVEL 1 A successful interview. You will also need to complete an assessment for some courses.

LEVEL 2 2 GCSEs at grade D/3 or above. Level 1 functional skills English and maths.

LEVEL 3 At least 4 GCSEs at grade A*-C/9-4, a merit or distinction at Level 2 with functional skills in English and maths.

For some courses you will be required to show a portfolio or have an audition.

See our website **west-thames.ac.uk** for specific course entry requirements.



Animation and Games Design

Animators are in very high demand in the UK and can be employed in areas of the entertainment industry such as TV, film or video games. Their work involves creating 2D and 3D models of characters, props and scenery, using CGI software to add movement, and making sure that animation integrates seamlessly with dialogue and music.



About our Animation and Games Design courses

This type of work requires both artistic talent and technical skills, which students will develop in our multimedia suites using industry standard software such as Maya, Mudbox, Unity, After Effects and Photoshop.

We believe that students need to be engaged in every aspect of this subject and foster imaginative skills to feed back into their design work – and the courses are also designed to be fun!

Careers/salary expectations

Research and development managers

Up to £51,000

Programmers and software development professionals

Up to £46,300

Artists

Up to £33,300

See our website west-thames.ac.uk/courses for more detailed course information. Use the QR code on the opposite page for fast access.

Call **020 8326 2000** for help and advice regarding our courses and support services.

LEVEL
1

Digital Design

1 year

LEVEL
3

Animation and Games Design

2 years

ual: university
of the arts
london

These FE courses are accredited by the University of the Arts London Awarding Body, the only specialist art, design and creative industries awarding organisation in England.

Entry requirements

LEVEL 1 A successful interview. You will also need to complete an assessment for some courses.

LEVEL 2 2 GCSEs at grade D/3 or above. Level 1 functional skills English and maths.

LEVEL 3 At least 4 GCSEs at grade A*-C/9-4, a merit or distinction at Level 2 with functional skills in English and maths.

*For some courses you will be required to show a portfolio or have an audition.
See our website west-thames.ac.uk for specific course entry requirements.*

LEVEL
2

Digital Design

(Introduction to Animation and Games)

1 year

Course progression at West Thames

Progress to an appropriate course at a higher level.

Course details

See our website
west-thames.ac.uk

Fast track to our Course Explorer by scanning this QR code with your smartphone.

1 Open your phone's camera

2 Hover over the QR code

3 Choose from our range of courses that appear on this page.





Creative and Digital Technologies

Creative and digital media includes online platforms, TV, radio, console games and more.

People who work in this industry can be responsible for creating content, creating websites or apps, coding, designing and testing games, using a camera or capturing sound.



About our Creative and Digital Technologies courses

It's a hugely important part of the UK economy with great career opportunities. On our courses you will use professional software including Final Cut Pro, Photoshop, After Effects and InDesign, and work on Apple Macs for editing and production.

Links with top employers will give you opportunities to gain work experience and to work on live briefs.

Careers/salary expectations

Advertising accounts managers and creative directors

Up to £42,000

Web design and development professionals

Up to £33,300

Graphic designers

Up to £30,200

See our website [west-thames.ac.uk/courses](https://www.west-thames.ac.uk/courses) for more detailed course information. Use the QR code on the opposite page for fast access.

Call **020 8326 2000** for help and advice regarding our courses and support services.

LEVEL
1

Digital Design

1 year

Course progression at West Thames

Progress to an appropriate course at a higher level.

ual: university
of the arts
london

These FE courses are accredited by the University of the Arts London Awarding Body, the only specialist art, design and creative industries awarding organisation in England.

LEVEL
2

Digital Arts

(Introduction to Animation and Games)

1 year

Animation and Games Design

(Introduction to Animation and Games)

2 years

Course details

See our website
west-thames.ac.uk

Fast track to our Course Explorer by scanning this QR code with your smartphone.



- 1 Open your phone's camera
- 2 Hover over the QR code
- 3 Choose from our range of courses that appear on this page.

Entry requirements

LEVEL 1 A successful interview. You will also need to complete an assessment for some courses.

LEVEL 2 2 GCSEs at grade D/3 or above. Level 1 functional skills English and maths.

LEVEL 3 At least 4 GCSEs at grade A*-C/9-4, a merit or distinction at Level 2 with functional skills in English and maths.

For some courses you will be required to show a portfolio or have an audition.

See our website **west-thames.ac.uk** for specific course entry requirements.



Media

From TV and film to the internet and radio, media is everywhere, both entertaining and influencing us. Employers in this field look for people who are enthusiastic, versatile and able to build relationships within a team.

Job roles can involve working on content or in administration, behind the scenes as a technician, director, researcher or producer, or in front of the camera as a broadcaster or radio presenter.

About our Media courses

When you study on our courses you will use our TV studio with professional cameras and chroma key sound effects, sound recording studios with ProTools HD, Logic Pro and surround sound, digital video editing suites with Final Cut Pro, audio/MIDI music production suites and multimedia suite.

You will perform and engineer live gigs, work on live briefs, get involved in our Creative Arts Festival, and gain exciting work placements so that you will be prepared to find employment in leading media and production companies around London.

Student success

Miranda Evans / Media



Miranda, a former Level 3 Creative Media Production student, had a work placement at The 86th Floor Media, then was promoted to full-time production co-ordinator. She now travels across Europe producing short films and videos.

Careers/salary expectations

Advertising and public relations directors

Up to £71,000

Web design and development professionals

Up to £33,300

Graphic designers

£18,200 - £32,800

See our website [west-thames.ac.uk/courses](https://www.west-thames.ac.uk/courses) for more detailed course information. Use the QR code on the opposite page for fast access.

Call **020 8326 2000** for help and advice regarding our courses and support services.

LEVEL
2

Creative Media Production

1 year

Course progression at West Thames

Progress to an appropriate course at a higher level, including our **Higher Education:**

Creative Media Production
HNC/HND

ual: university
of the arts
london

These FE courses are accredited by the University of the Arts London Awarding Body, the only specialist art, design and creative industries awarding organisation in England.

LEVEL
3

Creative Media Production

(Television and Film)

1 year (90 credit diploma)

2 years (extended diploma)

Course details

See our website
west-thames.ac.uk

Fast track to our Course Explorer by scanning this QR code with your smartphone.

1 Open your phone's camera

2 Hover over the QR code

3 Choose from our range of courses that appear on this page.



Entry requirements

LEVEL 1 A successful interview. You will also need to complete an assessment for some courses.

LEVEL 2 2 GCSEs at grade D/3 or above. Level 1 functional skills English and maths.

LEVEL 3 At least 4 GCSEs at grade A*-C/9-4, a merit or distinction at Level 2 with functional skills in English and maths.

For some courses you will be required to show a portfolio or have an audition.

See our website **west-thames.ac.uk** for specific course entry requirements.



Music

The UK music industry is diverse and fast-moving and there are many opportunities for those with passion, talent and drive – and not just performers, either.

The wide range of careers in music includes songwriting, live entertainment, music education or production, artist or tour management, promotion or journalism. There's also a career to be made in composing music for films, TV and theatre.

About our Music courses

At West Thames College you'll gain the skills you need in our well-equipped music technology production suites and recording studios, using the latest software such as Logic Pro X, Pro Tools and Reason.

You will go on industry visits, eg to EMI and the Royal Opera House, and organise, engineer and perform in live gigs such as Oxjam and the Creative Arts Festival. Previous students have forged successful careers as musicians or gone on to work for Sky, Kiss FM and Richmond Theatre.

Student success

Rodell Sorzano / Music



After studying dance at West Thames, Rodell won a Performing Arts scholarship to Leicester De Montford University. He is now a successful songwriter, musician and producer who has performed at carnivals including Notting Hill, and was the headline act at Soca Frenzy in London and the Labour Day Carnival in New York.

Careers/salary expectations

Arts officers, producers and directors

Up to £43,000

Musicians

Up to £36,400

Actors, entertainers and presenters

Up to £35,900

See our website [west-thames.ac.uk/courses](https://www.west-thames.ac.uk/courses) for more detailed course information. Use the QR code on the opposite page for fast access.

Call **020 8326 2000** for help and advice regarding our courses and support services.

LEVEL
1

Music and Media

1 year

LEVEL
2

Contemporary Music

(Performance/Technology)
1 year

LEVEL
3

Contemporary Music

(Performance/Technology)
1 year (90 credit diploma)
2 years (extended diploma)

Course progression at West Thames

Progress to an appropriate course at a higher level.

Course details

See our website
west-thames.ac.uk

Fast track to our Course Explorer by scanning this QR code with your smartphone.

1 Open your phone's camera

2 Hover over the QR code

3 Choose from our range of courses that appear on this page.



ual: university
of the arts
london

These FE courses are accredited by the University of the Arts London Awarding Body, the only specialist art, design and creative industries awarding organisation in England.

Entry requirements

LEVEL 1 A successful interview. You will also need to complete an assessment for some courses.

LEVEL 2 GCSEs at grade D/3 or above. Level 1 functional skills English and maths.

LEVEL 3 At least 4 GCSEs at grade A*-C/9-4, a merit or distinction at Level 2 with functional skills in English and maths.

For some courses you will be required to show a portfolio or have an audition.

See our website **west-thames.ac.uk** for specific course entry requirements.



Performing Arts and Dance

Careers in performing arts and dance are challenging but highly rewarding, with a host of job opportunities both offstage and in the spotlight.

An entire team is needed to create a performance: not just actors and dancers but directors, producers, set designers, choreographers and lighting technicians.

About our Performing Arts and Dance courses

Our facilities include dance studios and a 140-seat theatre with professional sound and lighting rig. Our teachers have exceptional industry experience and you will take part in workshops led by directors and industry professionals.

You will have work experience opportunities and go on visits to prestigious West End venues such as Sadler's Wells, the Donmar Warehouse and Lyric Theatre Hammersmith. We have a great record for success, with previous students starring in film, TV and theatre, performing in dance companies and on ITV's Britain's Got Talent, or finding work behind the scenes as technicians or in costume and makeup departments.

Careers/salary expectations

Dancers and choreographers

Up to £44,000

Arts officers, producers and directors

Up to £43,200

Actors, entertainers and presenters

Up to £35,900

Upon successful completion of this course, you can progress to Higher Education including the opportunity to complete a degree with our partner universities.

See our website [west-thames.ac.uk/courses](https://www.west-thames.ac.uk/courses) for more detailed course information. Use the QR code on the opposite page for fast access.

Call **020 8326 2000** for help and advice regarding our courses and support services.

LEVEL
2

Performing Arts and Dance

1 year

Course progression at West Thames

Progress to an appropriate course at a higher level, including our **Higher Education**:

Performing Arts
HNC/HND

Urban and Contemporary Dance Practice
HNC/HND

ual: university of the arts london

These FE courses are accredited by the University of the Arts London Awarding Body, the only specialist art, design and creative industries awarding organisation in England.

Entry requirements

LEVEL 1 A successful interview. You will also need to complete an assessment for some courses.

LEVEL 2 GCSEs at grade D/3 or above. Level 1 functional skills English and maths.

LEVEL 3 At least 4 GCSEs at grade A*-C/9-4, a merit or distinction at Level 2 with functional skills in English and maths.

For some courses you will be required to show a portfolio or have an audition.

See our website west-thames.ac.uk for specific course entry requirements.

LEVEL
3

Performing Arts (Acting)

1 year (90 credit diploma)
2 years (extended diploma)

Dance

1 year (90 credit diploma)
2 years (extended diploma)

Course details

See our website
west-thames.ac.uk

Fast track to our Course Explorer by scanning this QR code with your smartphone.

1 Open your phone's camera

2 Hover over the QR code

3 Choose from our range of courses that appear on this page.





Hairdressing

Hairdressing isn't just about working in a salon – if you have the talent and a good work ethic, hairdressing skills can take you around the world, behind the scenes at fashion shows or into careers in film, TV or theatre.

About our Hairdressing courses

Our courses have high success rates and are staffed by teachers with extensive professional experience. You will train in our professional hair salons, which are open to the public to give you opportunities to develop your client handling skills, and take part in industry visits and exhibitions in the UK.

Our students take part in and often win local and national competitions and we've hosted WorldSkills UK competitions in our own salon. Links with L'Oréal ensure that students use the best products.

Our alumni work as hairstylists and wig dressers in West End shows, on TV, feature films, catwalk shows and advertising campaigns.



Careers/salary expectations

Hairdressing and beauty salon managers and proprietors

Up to £27,000

Hairdressers and barbers

Up to £17,200

See our website [west-thames.ac.uk/courses](https://www.west-thames.ac.uk/courses) for more detailed course information. Use the QR code on the opposite page for fast access.

Call **020 8326 2000** for help and advice regarding our courses and support services.

LEVEL
1

Foundation Hairdressing

1 year

LEVEL
2

Hairdressing

1 year

Barbering

1 year

Hair and Media Makeup Studies

1 year

LEVEL
3

Hairdressing

1 year

Course progression at West Thames

Progress to an appropriate course at a higher level.

Course details

See our website
west-thames.ac.uk

Fast track to our Course Explorer by scanning this QR code with your smartphone.

1 Open your phone's camera

2 Hover over the QR code

3 Choose from our range of courses that appear on this page.



Entry requirements

LEVEL 1 A successful interview. You will also need to complete an assessment for some courses.

LEVEL 2 2 GCSEs at grade D/3 or above. Level 1 functional skills English and maths.

LEVEL 3 At least 4 GCSEs at grade A*-C/9-4, a merit or distinction at Level 2 with functional skills in English and maths.

For some courses you will be required to show a portfolio or have an audition.

*See our website **west-thames.ac.uk** for specific course entry requirements.*



Beauty Therapy

No matter what your interests, there's a career path in beauty therapy to suit you. Teachers at West Thames College have professional industry experience and our beauty salons are open to the public, giving you opportunities to develop your client handling skills and master the latest treatments.

You will also learn about salon management, administration and retail, preparing you for a range of different job roles.

About our Beauty Therapy courses

You will learn how to perform a range of professional beauty treatments in our modern, well equipped training salons to get you ready to work within this exciting industry.

We have links with various employers and industry leaders like Dermalogica, Fake Bake, MAC and other Beauty and cosmetics companies.

Students who have trained with us have gone on to work as beauty therapists, spa therapists, makeup artists, cruise ship therapists and salon owners.

Student success

Francesca Sherwood / Beauty Therapy



After the course Francesca went on to open her own salon, True Beauty Salon & Medispa, based in Twickenham. She has used the skills she learned on her course to establish her award-winning business.

Careers/salary expectations

Therapy professionals

Up to £39,000

Hairdressing and beauty salon managers and proprietors

Up to £27,600

Beauticians and related occupations

Up to £17,700

See our website [west-thames.ac.uk/courses](https://www.west-thames.ac.uk/courses) for more detailed course information. Use the QR code on the opposite page for fast access.

Call **020 8326 2000** for help and advice regarding our courses and support services.

LEVEL
1

Foundation Beauty Therapy

1 year

LEVEL
2

Beauty Therapy

1 year

LEVEL
3

Beauty Therapy

1 year

LEVEL
4

Advanced Beauty Therapy

1 year

Course progression at West Thames

Take an apprenticeship or progress to an appropriate course at a higher level.

Course details

See our website
west-thames.ac.uk

Fast track to our Course Explorer by scanning this QR code with your smartphone.

1 Open your phone's camera

2 Hover over the QR code

3 Choose from our range of courses that appear on this page.



Entry requirements

LEVEL 1 A successful interview. You will also need to complete an assessment for some courses.

LEVEL 2 2 GCSEs at grade D/3 or above. Level 1 functional skills English and maths.

LEVEL 3 At least 4 GCSEs at grade A*-C/9-4, a merit or distinction at Level 2 with functional skills in English and maths.

For some courses you will be required to show a portfolio or have an audition.

See our website **west-thames.ac.uk** for specific course entry requirements.



Specialist Makeup

Our professional specialist makeup courses have an outstanding reputation – our students have won the World Body Painting Championships twice.

About our Specialist Makeup courses

You'll work in our professional makeup studios and 140-seat theatre and learn from professional, award-winning teachers with extensive industry experience. You will take part in a range of competitions as well as benefit from our fantastic industry links with Illamasqua, MAC, Makeup Forever, L'Oreal and Charles Fox. We also use makeup kits by Revolution Makeup, ensuring that you use the best products on your course.

Our alumni have gone on to work on music videos and TV ads, for magazines and the Royal Ballet, on theatre productions such as The Book of Mormon and Jesus Christ Superstar, The Crown on Netflix, HBO's Game of Thrones, and films including Fantastic Beasts and Guardians of the Galaxy.

Upon successful completion of this course, you can progress to Higher Education including the opportunity to complete a degree with our partner universities.

Student success

**Alix Brewer /
HND Specialist
Makeup**



In 2018, Alix worked as Head of Makeup on a short indie film called Blood Means Nothing, for which she won the Best Special Makeup award at Indie Short Fest, part of the Los Angeles International Film Festival.

Careers/salary expectations

Freelance makeup designer

Average £300 per day

Counter makeup artist

£13-25K, plus commission

See our website [west-thames.ac.uk/courses](https://www.west-thames.ac.uk/courses) for more detailed course information. Use the QR code on the opposite page for fast access.

Call **020 8326 2000** for help and advice regarding our courses and support services.

LEVEL
2

Hair and Media Makeup Studies

1 year

Course progression at West Thames

Progress to an appropriate course at a higher level, including our **Higher Education**:

Production Media Makeup
HNC

Specialist Makeup
HND

LEVEL
3

Theatrical Media Makeup

1 year

Course details

See our website
west-thames.ac.uk

Fast track to our Course Explorer by scanning this QR code with your smartphone.

1 Open your phone's camera

2 Hover over the QR code

3 Choose from our range of courses that appear on this page.



Entry requirements

LEVEL 1 A successful interview. You will also need to complete an assessment for some courses.

LEVEL 2 2 GCSEs at grade D/3 or above. Level 1 functional skills English and maths.

LEVEL 3 At least 4 GCSEs at grade A*-C/9-4, a merit or distinction at Level 2 with functional skills in English and maths.

For some courses you will be required to show a portfolio or have an audition.

*See our website **west-thames.ac.uk** for specific course entry requirements.*



Sport

Do you enjoy being active or have a passion for sport? Working in the sport and active leisure industry is a great way to combine doing what you enjoy with paid work.

There are a wide range of careers to choose from: sports journalism, photography or advertising, working as personal trainer or in sports nutrition, coaching or being a referee – not to mention playing a sport professionally.

About our Sport courses

Our experienced sports professionals will develop your skills and help you gain qualifications in sports leadership and coaching. You'll use our sports hall, fitness suite and outdoor pitches, and take part in activities such as coaching and a wide variety of sports.

You'll go on trips and visits to London stadiums and health clubs, and take part in work experience, and you can also join one of the college's successful sports teams.

Student success

**Jan Žamburek /
Sport and
Public Services**



Former West Thames College student Jan, not only secured a professional contract for the Brentford FC first team, but he made club history by being one of the youngest players born this century to play in the Championship for the club.

"I was so excited and also a little bit nervous. The Stadium was almost full so the atmosphere was really nice. When I stepped on to the pitch I started to feel like in a normal game and also teammates helped me alot, so it was much easier for me."

Careers/salary expectations

Leisure and sports managers

Up to £34,000

Sports coaches, instructors and officials

Up to £28,600

Sports and leisure assistants

Up to £17,700

See our website [west-thames.ac.uk/courses](https://www.west-thames.ac.uk/courses) for more detailed course information. Use the QR code on the opposite page for fast access.

Call **020 8326 2000** for help and advice regarding our courses and support services.

LEVEL
1

Foundation Sport with Public Services

1 year

LEVEL
3

Sport

2 years

Course progression at West Thames

Progress to an appropriate course at a higher level or the Brentford FC CST Programme.

Entry requirements

LEVEL 1 A successful interview. You will also need to complete an assessment for some courses.

LEVEL 2 GCSEs at grade D/3 or above. Level 1 functional skills English and maths.

LEVEL 3 At least 4 GCSEs at grade A*-C/9-4, a merit or distinction at Level 2 with functional skills in English and maths.

For some courses you will be required to show a portfolio or have an audition.

See our website west-thames.ac.uk for specific course entry requirements.

LEVEL
2

Sport

1 year

LEVEL
2

+

LEVEL
3

Brentford FC CST Elite Development Programme

2 years

Study at college and develop your footballing skills with Brentford FC's CST coaching staff and play against other teams in a league.

Course details

See our website
west-thames.ac.uk

Fast track to our Course Explorer by scanning this QR code with your smartphone.

1 Open your phone's camera

2 Hover over the QR code

3 Choose from our range of courses that appear on this page.





Uniformed Public Services

Prepare for a career in one of the uniformed services – including the fire service, paramedics, police or armed forces – with our Public Services courses.

Our staff have experience in these fields and will help you build the skills you need to succeed.

About our Uniformed Public Services courses

You will take part in unique enrichment opportunities and outdoor activities like camping, canoeing, orienteering, abseiling and climbing. Visits will be arranged to the Crown court to have first-hand knowledge of the legal system and variety of roles within the organisation.

Alumni from these courses have gone on to work in the Metropolitan Police, fire departments, Royal Marines, Parachute Regiment, MI5, in youth offending teams and the ambulance service as a paramedic.

Careers/salary expectations

Police officers (sergeant and below)

Up to £42,000

Public services associate professionals

Up to £38,200

Sports coaches, instructors and officials

Up to £28,600

See our website [west-thames.ac.uk/courses](https://www.west-thames.ac.uk/courses) for more detailed course information. Use the QR code on the opposite page for fast access.

Call **020 8326 2000** for help and advice regarding our courses and support services.



Foundation Public Services and Sport

1 year



Uniformed Public Services

1 year



Uniformed Public Services

2 years

Course progression at West Thames

Progress to an appropriate course at a higher level.

Course details

See our website west-thames.ac.uk

Fast track to our Course Explorer by scanning this QR code with your smartphone.

1 Open your phone's camera

2 Hover over the QR code

3 Choose from our range of courses that appear on this page.



Entry requirements

LEVEL 1 A successful interview. You will also need to complete an assessment for some courses.

LEVEL 2 2 GCSEs at grade D/3 or above. Level 1 functional skills English and maths.

LEVEL 3 At least 4 GCSEs at grade A*-C/9-4, a merit or distinction at Level 2 with functional skills in English and maths.

For some courses you will be required to show a portfolio or have an audition.

See our website west-thames.ac.uk for specific course entry requirements.



Travel, Tourism and Aviation

Our location close to Heathrow makes West Thames College the ideal place to study travel, tourism and aviation. Careers in this industry are varied: you might work at a theme park, heritage site or other visitor attractions, in

passenger transport such as aviation and rail, accommodation services in hotels, hostels or holiday parks, organise outdoor activities or co-ordinate tours, to name just a few.

About our Travel, Tourism and Aviation courses

We have close links with British Airways for work experience placements, workshops and guest speakers. Students visit the World Travel Market exhibition and have opportunities for trips to London tourist attractions, European cities, hotels and theme parks.

You will gain the specific skills and knowledge required for a career in this industry.

Careers/salary expectations

Travel agency managers and professionals

Up to £38,000

Air travel assistants

Up to £27,600

Travel agents

Up to £22,900

See our website [west-thames.ac.uk/courses](https://www.west-thames.ac.uk/courses) for more detailed course information. Use the QR code on the opposite page for fast access.

Call **020 8326 2000** for help and advice regarding our courses and support services.

LEVEL
1

Business and Travel with ESOL

1 year

Foundation Business and Travel

1 year

LEVEL
3

Travel and Tourism

2 years

Aviation Operations

2 years

Entry requirements

LEVEL 1 A successful interview. You will also need to complete an assessment for some courses.

LEVEL 2 2 GCSEs at grade D/3 or above. Level 1 functional skills English and maths.

LEVEL 3 At least 4 GCSEs at grade A*-C/9-4, a merit or distinction at Level 2 with functional skills in English and maths.

For some courses you will be required to show a portfolio or have an audition.

See our website west-thames.ac.uk for specific course entry requirements.

LEVEL
2

Travel and Tourism

1 year

Aviation and Cabin Crew

1 year

Course progression at West Thames

Progress to an appropriate course at a higher level.

Course details

See our website
west-thames.ac.uk

Fast track to our Course Explorer by scanning this QR code with your smartphone.

1 Open your phone's camera

2 Hover over the QR code

3 Choose from our range of courses that appear on this page.





ESOL

(English for Speakers of Other Languages)

Improving your English can help you get more out of life in the UK. It will also help if you want to study, improve your CV, find a job or just become more confident using the language.

About our ESOL courses

You will learn speaking, reading and writing skills and go on trips to London museums and tourist attractions, such as the Houses of Parliament.

Supportive teachers will help you build your confidence so that you can progress quickly and gain qualifications. You'll then be ready to go on to a vocational course or to study for GCSEs or A Levels.

ESOL courses are designed for anyone whose first language is not English.

Careers/salary expectations

Authors, writers and translators

Up to £37,000

Teaching and other educational professionals

Up to £29,700

Speech and language therapists

Up to £30,700

See our website [west-thames.ac.uk/courses](https://www.west-thames.ac.uk/courses) for more detailed course information. Use the QR code on the opposite page for fast access.

Call **020 8326 2000** for help and advice regarding our courses and support services.

Ascentis Skills for Life

ESOL for 16-18s

1 year

Course progression at West Thames

Our ESOL students progress to other courses at the college, including:

- Business and Travel with ESOL
- Creating Digital Products with ESOL

Course details

See our website
west-thames.ac.uk

Fast track to our Course Explorer
by scanning this QR code with your
smartphone.

- 1 Open your phone's camera
- 2 Hover over the QR code
- 3 Choose from our range of courses that appear on this page.



Entry requirements

LEVEL 1 A successful interview. You will also need to complete an assessment for some courses.

LEVEL 2 2 GCSEs at grade D/3 or above. Level 1 functional skills English and maths.

LEVEL 3 At least 4 GCSEs at grade A*-C/9-4, a merit or distinction at Level 2 with functional skills in English and maths.

*For some courses you will be required to show a portfolio or have an audition.
See our website **west-thames.ac.uk** for specific course entry requirements.*



Rene, a Supported Learning student, tells us how her daily activities and the people who support at our college are making a big impact in her life.

Watch her story here:



Supported Learning

Our Supported Learning courses are designed for all abilities and will build confidence, independence, social and personal skills in a supportive environment.

We have state-of-the-art equipment and purpose-built areas conducive to learning. This includes a fully equipped kitchen and café, a beautiful large garden and horticulture area as well as business administration and art rooms. We also have a dedicated classroom and a sensory room for students with complex or profound disabilities.

Careers/salary expectations

Government agencies, other employment support organisations and schemes such the Project SEARCH programme run by the college, provide work experience and help students enter into long term employment.

West Thames College is itself a 'Disability Confident' employer. This accreditation is awarded to employers who have committed to supporting disabled people.



About our Supported Learning courses

Through our vocational curriculum students study hospitality and catering and run our Bubble Café. They also study gardening and horticulture and business administration with enterprise.

Our students play football in the Surrey LDD league, and take part in drama workshops. Courses benefit from small class sizes and students will take part in community opportunities and a varied range of enrichment activities. Work experience is available at GlaxoSmithKline Brentford and the London Borough of Hounslow through Project SEARCH, a programme that has been recognised as one of the best of its kind in Europe.

See our website [west-thames.ac.uk/courses](https://www.west-thames.ac.uk/courses) for more detailed course information. Use the QR code on the opposite page for fast access.

Call **020 8326 2000** for help and advice regarding our courses and support services.

**PRE
ENTRY**

RARPA

(Recognising and Recording Progress and Achievement)

Learning for independent living and personal development.

**LEVEL
1**

Entry to Vocational Education and Skill Builders

Project SEARCH with GlaxoSmithKline/ London Borough of Hounslow

Project Search is a work-based programme for young people with learning disabilities, which supports their move from education to employment. Students have an extended work experience placement at either GlaxoSmithKline or the Hounslow Civic Centre, taught by a West Thames College teacher and supported by a full-time job coach.

Course progression at West Thames

Progress to an appropriate course at a higher level.

Entry requirements

LEVEL 1 A successful interview. You will also need to complete an assessment for some courses.

LEVEL 2 2 GCSEs at grade D/3 or above. Level 1 functional skills English and maths.

LEVEL 3 At least 4 GCSEs at grade A*-C/9-4, a merit or distinction at Level 2 with functional skills in English and maths.

For some courses you will be required to show a portfolio or have an audition. See our website west-thames.ac.uk for specific course entry requirements.

**LEVEL
2**

Entry to Vocational Education and Skill Builders

Pre-Project Search (PPS) Extended Award in Employability Skill

**LEVEL
3**

Entry to Vocational Education and Skill Builders

Course details

See our website
west-thames.ac.uk

Fast track to our Course Explorer by scanning this QR code with your smartphone.

1 Open your phone's camera

2 Hover over the QR code

3 Choose from our range of courses that appear on this page.





Construction and Building Trades

There is a huge range of career choices in the construction industry which can involve designing, planning and project management as well as hands-on practical work. Construction is about designing and building the environment around us, with a number of different organisations working together. So you could be employed by a large or small company, or how about being your own boss as a self-employed tradesperson?

Careers/salary expectations

Production managers and directors in construction

Up to £49,000

Plumbers and heating and ventilating engineers

Up to £30,200

Painters and decorators

Up to £25,000

About our Construction and Building Trades courses

Our specialist construction workshops at the Skills+Logistics Centre are equipped for all the trade skills: plumbing, carpentry, painting and decorating and electrical installation.

Our highly skilled tutors have experience in the building trades and you will work on live briefs and building projects. We have close links with local employers such as Volker Fitzpatrick, Ecoworld Homes (Nantly House), Countryside Homes and Engi to help give you a route into employment.

See our website [west-thames.ac.uk/courses](https://www.west-thames.ac.uk/courses) for more detailed course information. Use the QR code on the opposite page for fast access.

Call **020 8326 2000** for help and advice regarding our courses and support services.



Construction

(Multi-Skills) 1 year

Plumbing

1 year

Electrical Installation

1 year

Painting and Decorating

1 year

Carpentry and Joinery

1 year



Carpentry and Joinery

1 year

Painting and Decorating

1 year

Course progression at West Thames

Take an apprenticeship or progress to an appropriate course at a higher level.

Entry requirements

LEVEL 1 A successful interview. You will also need to complete an assessment for some courses.

LEVEL 2 2 GCSEs at grade D/3 or above. Level 1 functional skills English and maths.

LEVEL 3 At least 4 GCSEs at grade A*-C/9-4, a merit or distinction at Level 2 with functional skills in English and maths.

For some courses you will be required to show a portfolio or have an audition.

See our website west-thames.ac.uk for specific course entry requirements.



Electrical Installation

1 year

Painting and Decorating

1 year

Carpentry and Joinery

1 year

Plumbing Studies

1 year

Course details

See our website
west-thames.ac.uk


Fast track to our Course Explorer by scanning this QR code with your smartphone.

1 Open your phone's camera

2 Hover over the QR code

3 Choose from our range of courses that appear on this page.





Zayd, an Engineering student, tells us about how his practical classes and our supportive staff have helped him gain a place at his dream university in September.

Watch his story here:



Student success

Sabina Enu-Kwesi / Manufacturing

After studying Level 2 and Level 3 Manufacturing at the college, Sabina embarked on an apprenticeship with the Otis Elevator Company, eventually becoming a full-time employee. She is continuing her education with a degree in Business Psychology at Birkbeck, University of London.

Engineering

Engineering is behind everything – from your smartphone to the shoes on your feet. Engineers and technicians are in high demand in the UK and it's a well-paid career option that spans every sector, from sports to space.

As an engineer you will use maths and science to turn ideas into reality, working anywhere from buildings in your community to space aircraft in aerospace engineering.

About our Engineering courses

We have industry standard engineering workshops at the Skills+Logistics Centre, a CNC room with computer-controlled laser cutting machines, and a logistics training facility to provide training for this thriving local industry. Students take part in National Science Week and live projects such as WorldSkills London. Our location close to Heathrow Airport and our links with employers such as Halfords, Volker Fitzpatrick, TFL, Mercedes, Kia and Honda give you access to great work experience and apprenticeship opportunities.

Careers/salary expectations

Production managers and directors in manufacturing

Up to £60,000

Engineering technicians

Up to £39,000

Aircraft maintenance and related trades

Up to £35,400

See our website [west-thames.ac.uk/courses](https://www.west-thames.ac.uk/courses) for more detailed course information. Use the QR code on the opposite page for fast access.

Call **020 8326 2000** for help and advice regarding our courses and support services.

LEVEL
2

Engineering

1 year

Course progression at West Thames

Progress to an appropriate course at a higher level.

LEVEL
3

Advance Manufacturing in Engineering

2 years

Civil Engineering

2 years

Course details

See our website
west-thames.ac.uk

Fast track to our Course Explorer by scanning this QR code with your smartphone.

- 1 Open your phone's camera
- 2 Hover over the QR code
- 3 Choose from our range of courses that appear on this page.



Entry requirements

LEVEL 1 A successful interview. You will also need to complete an assessment for some courses.

LEVEL 2 2 GCSEs at grade D/3 or above. Level 1 functional skills English and maths.

LEVEL 3 At least 4 GCSEs at grade A*-C/9-4, a merit or distinction at Level 2 with functional skills in English and maths.

For some courses you will be required to show a portfolio or have an audition.

*See our website **west-thames.ac.uk** for specific course entry requirements.*



Motor Vehicle

The motor industry is undergoing rapid change and sustainable growth in both public and private transportation and it's a great area to build a long-term career – whether in design, service, manufacturing or sales.

The government is committed to the UK becoming a world leader in electric and driverless technologies which means that there will be exciting opportunities for those with experience and skills in the motor vehicle industry.



Careers/salary expectations

Metal working production and maintenance fitters

Up to £33,000

Vehicle technicians, mechanics and electricians

Up to £29,700

Vehicle and parts salespersons and advisers

Up to £20,800

About our Motor Vehicle courses

Our fully functional garage workshop at the Skills+Logistics Centre has industry standard equipment, providing a realistic work environment.

Our courses are taught by highly experienced motor trade professionals and you'll get careers advice from guest speakers, ensuring that you have the skills and experience to progress to an apprenticeship, further qualifications or a job in the industry.

See our website [west-thames.ac.uk/courses](https://www.west-thames.ac.uk/courses) for more detailed course information. Use the QR code on the opposite page for fast access.

Call **020 8326 2000** for help and advice regarding our courses and support services.

LEVEL
1

Vehicle Systems Maintenance

1 year

LEVEL
2

Electric Vehicles

1 year part-time

Electric Vehicles

1 year part-time

LEVEL
3

Vehicle Maintenance

1 year

Course progression at West Thames

Take an apprenticeship or progress to an appropriate course at a higher level.



Apprenticeships

See page 64 for the steps required to take you into the world of earning and learning.

Course details

See our website
west-thames.ac.uk

Fast track to our Course Explorer by scanning this QR code with your smartphone.

1 Open your phone's camera

2 Hover over the QR code

3 Choose from our range of courses that appear on this page.



Entry requirements

LEVEL 1 A successful interview. You will also need to complete an assessment for some courses.

LEVEL 2 2 GCSEs at grade D/3 or above. Level 1 functional skills English and maths.

LEVEL 3 At least 4 GCSEs at grade A*-C/9-4, a merit or distinction at Level 2 with functional skills in English and maths.

For some courses you will be required to show a portfolio or have an audition.

See our website **west-thames.ac.uk** for specific course entry requirements.

A low-angle photograph of graduates in black gowns celebrating. Several black graduation caps with blue tassels are flying in the air. In the foreground, a man and a woman are looking up with joyful expressions, their mouths open as if shouting or cheering. The woman is holding a rolled-up white diploma tied with a red ribbon. Other graduates are visible in the background, also celebrating.

Next steps

After your course you will be ready to go onto university, find a job or start an apprenticeship.

So why stay with us?

- 🏠 A higher level qualification will improve your chance to progress in the competitive jobs market.
- 🏠 Our friendly staff will continue to give you all the support you need throughout your course.
- 🏠 Our Higher Education courses are designed to give you practical skills, delivered by professional lecturers with industry experience. You will receive a high ratio of direct teaching time so that by the end of your studies you will be ready for the job market.
- 🏠 With a two year course you'll only have to pay two years' tuition fees. You will then have the option of progressing directly to the second or final year of a university honours degree course or finding a job of your choice.

Find out more:
**[west-thames.ac.uk/
higher-education](http://west-thames.ac.uk/higher-education)**

Our HE courses

HNC

Higher National Certificate
1 year courses

- Applied Biology
- Business
- Creative Media Production
- Performing Arts and Dance
- Production Media Makeup
- Software and App Development

HND

Higher National Diploma
2 year courses

- Applied Biology
- Business
- Creative Media Production
- Performing Arts and Dance
- Software and App Development
- Specialist Makeup
- Urban and Contemporary Dance

Foundation Degree

- FdA Early Years 2 years in partnership with Kingston University

Teacher Training

- Diploma in Education and Training
- (DET) 2 years in partnership with Canterbury Christ Church University

T-Levels

T-LEVELS
THE NEXT LEVEL QUALIFICATION

Qualifications with work placements to take you to the next level.

What are T-Levels?

T-Levels offer:

- An alternative to A levels, apprenticeships and other 16 to 19 courses
- A qualification equivalent to three A Levels
- Routes for students into skilled employment, higher study or apprenticeships
- An in-depth industry placement that lasts at least 45 days. Students get valuable experience in the workplace; employers get early sight of the new talent in their industry.

How does it work?

You will spend 80% of the course in your learning environment, gaining the skills that employers need. The other 20% is a meaningful industry placement, where you put your learnt skills into action.

What subjects do West Thames College offer?

We are planning to offer two courses starting in September 2023* shown on the next page:



Digital Production, Design & Development – Level 3

- 2 year course
- 9 weeks minimum working with an employer on an industry placement

Potential careers:

- Web Developer
- Web Designer
- Software Developer
- Computer Games Tester
- Computer Games Developer
- E-learning Developer
- User Experience (UX) Designer.

What you'll learn:

You will develop an understanding of:

- how digital technologies impact business
- the ethical and moral implications of digital technology
- using data in software design
- using digital technologies to analyse and solve problems
- digital environments, including physical, virtual and cloud environments
- emerging technical trends, such as Internet of Things (IoT), Artificial Intelligence (AI), Augmented Reality (AR), Blockchain, 3D printing
- legal and regulatory obligations relating to digital technologies
- the privacy and confidentiality of personal data
- the technical, physical and human aspects of internet security
- planning digital projects
- testing software, hardware and data
- digital tools for project management and collaboration.

Health – Level 3

- 2 year course
- 9 weeks minimum working with an employer on an industry placement

Potential careers:

- Ambulance Care Assistant
- Emergency Care Assistant
- Healthcare Assistant
- Care Worker
- Palliative Care Assistant
- Dental Nurse.

What you'll learn:

You will develop a general understanding of health and science:

- working within the health and science sector
- health, safety and environmental regulations
- managing information and data
- principles of good scientific and clinical practice
- core science concepts including the structure of cells, tissues and large molecules, genetics, microbiology and immunology

You will also learn about topics specific to health, including:

- understanding the healthcare sector
- providing person-centred care
- supporting health and wellbeing
- further knowledge of both human anatomy and physiology and of diseases and disorders
- infection prevention and control.

** Subject to course approval.*

Earn as you learn

If you want to step straight into the world of work, then choose an apprenticeship.

It's the ideal way to get hands-on experience whilst studying for a qualification at the same time.

- An apprenticeship typically involves spending four days a week in a work environment gaining practical skills and one day a week studying at college.
- You will receive a salary of approximately £200 per week, depending on the job you are doing and your employer.
- Apprenticeships last on average 12-15 months for Level 2 and 18-24 months for Level 3.



Apprenticeships

6 steps to apprenticeship success

1

Decide which apprenticeship area you are interested in.

2

Register on the National Apprenticeship website www.gov.uk/apply-apprenticeship to see all the apprenticeship vacancies across the country.

3

Prepare your application – make sure your CV is up to date.

4

Apply for positions – go to the apprenticeship tab on our website or visit the National Apprenticeship Service.

5

Attend an interview if your application is successful.

6

Get the job!
Start work and train at the same time!

Fees and financial assistance

Courses are free for 16-18 year olds

There are no tuition or exam fees for UK students on further education courses who start their course when they are under 19 years. However, students taking re-sits may be required to pay the exam registration fee.

UK leaving the EU

16-18 year old EU students used to have the same status as UK students before the UK's withdrawal. However, there will be certain changes to fee structures and immigration status. Please therefore check with the college to clarify your situation.

DBS Check

For Health and Social Care and Childcare courses, you will need to pay for a Disclosure and Barring Service (DBS) check before you are accepted onto the course.

Materials

On some courses there will be a charge for specialist kits and materials. Please ask for details at enrolment.

Financial Support

We may be able to offer support to help pay for course-related expenses if students can demonstrate financial hardship. Ask for our Student Guide to Financial Support, or talk to a member of staff at the course interview.

Oyster cards

Full-time students and apprentices living in London may be eligible for free or discounted travel. For further information visit tfl.gov.uk.

Free College Meals

You may be entitled to free college meals if you or your family are on a low income. Please ask for details at enrolment.

College Nursery

Our college nursery offers full and part-time places for children aged 3 months to 5 years, providing a safe and stimulating learning environment for children while their parents study. Funding and subsidies may be available, but places are limited. For an application form and more information please contact the nursery on 020 8326 2318.

Find out more:
**[west-thames.ac.uk/
financial-support](http://west-thames.ac.uk/financial-support)**

See our website
west-thames.ac.uk or call our
Information Centre on **020 8326
2000** for further information on
fees and financial assistance.



West Thames College in the Community

Sustainable Fashion

In October 2022, 14 organisations and over 50 volunteers – including some of our very own West Thames College makeup students – worked together to put on Ealing’s first ever sustainable fashion show & clothes swap. The event was named Ealing Sewn Up and took place in Gunnersbury Park Museum.

Read more:



Building Fun and Imagination

Jelly Beans Pre-School Ltd commissioned our students to build a new mud kitchen that their little ones could play with as well as aide their development and sensory skills. Our students rose to the challenge to create a mud kitchen that will bring many hours of fun for years to come.

Read more:



Marathon Challenges

Level 2 Uniformed Public Services, Matthew, played in key role in the 2022 London Marathon as a health volunteer at one of the many race treatment centres which looks after the runners upon the completion of their demanding effort. Some of the regular tasks that Matthew carried out included checking the glucose levels, blood pressure, pulse rate, pupil dilation and temperature of runners. He even helped administer saline to a runner with the support of an experienced paramedic. His services were very much in demand as he completed a marathon of his own by working from 5am to 10pm that day!

Read more:



Subject index

A

Accounting	18
Acting	36
Animation	28
Applications	16
Applied Science	24
Apprenticeships	64
Art and Design	26
Aviation Operations	48

B

Barbering	38
Beauty	40
Brentford FC	44
Business	18

C

Cabin Crew	48
Carpentry and Joinery	54
Childcare	22
Computing	20
Construction	54
Creative and Digital Technologies	30
Creative Media	32

D

Dance	36
Digital Technologies	30
Drama	36

E

Early Years Care	22
Electrical Installation	54
Electric Vehicles	58
Engineering	56
Entry requirements	16
ESOL	50

F

Football	44
Foundation Degrees	60

G

Games Design	28
--------------	----

H

Hairdressing	38
Health and Social Care	22
Higher Education	60

I

ICT	20
Independent Living	52
Interactive Media	30
IT	20

L

Learning Support	14
------------------	----

M

Makeup	42
Manufacturing Engineering	56
Media	32
Motor Vehicle	58
Music	34
Music Technology	34

N

Networking	20
Nursery	65

P

Painting and Decorating	54
Performing Arts	36
Plumbing	54
Project SEARCH	52
Public Services	46

S

Science	24
Software Development	20
Specialist Makeup	42
Sport	44
Supported Learning	52
Support Services	14
Systems Support	20

T

T-Levels	62
Television and Film	32
Theatrical Makeup	42
Travel and Tourism	48
Travel and Business	48

U

Uniformed Public Services	46
---------------------------	----

Accessibility



Website

For help in optimising your experience using our website, please visit the Accessibility page:
[west-thames.ac.uk/governance/policies/accessibility](https://www.west-thames.ac.uk/governance/policies/accessibility)



Print

To request this publication in print, please call
020 8326 2000

Special thanks to all the staff and students at West Thames College who helped with the production of this prospectus.

See our website **[west-thames.ac.uk](https://www.west-thames.ac.uk)** for information about the college and our courses.

Call **20 8326 2000** for help and advice regarding our courses and support services.

Travel

Main Campus/ Isleworth

London Road TW7 4HS



Rail

Isleworth Station



Tube

Osterley or Hounslow East Stations (Piccadilly Line), then average 15 minute walk, or bus from Hounslow Bus Station



Bus

117, 235, 237, E8 and H37 buses stop outside the college.



Car parking

Isleworth is available for part-time evening and disabled students only

Skills+Logistics Centre/ Feltham

77 Boundaries Road TW13 5DR



Rail

Feltham Station



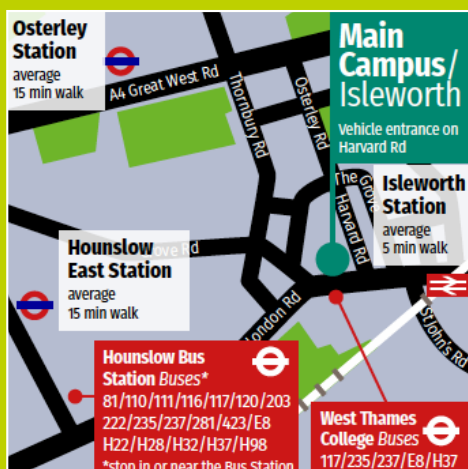
Bus

285 and 490 buses stop on Uxbridge Road



Car parking

Feltham has limited spaces for students.





**Start
HERE
Go FAR**

Get in touch

020 8326 2000
west-thames.ac.uk

Visit us

**Main Campus/
Isleworth**

London Road, Isleworth, TW7 4HS

**Skills+Logistics Centre
Feltham**

77 Boundaries Road, Feltham, TW13 5DR

