

London's
Top College

#1

Over 90%
Student Achievement
for 16-18s, 19+
& Overall



FULL TIME COURSES

FOR 16-18 YEAR OLDS
2025/26



West Thames
College London



Skills+
Logistics
Centre

WHY CHOOSE WEST THAMES COLLEGE



**NUMBER 1 COLLEGE
IN LONDON**
FOR STUDENT ACHIEVEMENT*



JOIN OUR
**AWARD WINNING
COMMUNITY**

100+

**100+ COURSES
IN 24 COURSE AREAS**



**A 'GOOD' COLLEGE BY
OFSTED, WITH
OUTSTANDING FACILITIES**



GREAT
**WORK EXPERIENCE
OPPORTUNITIES**



COURSES TAUGHT BY
**INDUSTRY
PROFESSIONALS**

CONTENTS

WHAT'S INSIDE

+ Why West Thames College	2
+ Welcome to West Thames College	4
+ About Us	6
+ Open Days	7
+ Life Outside the Classroom	8
+ Student Enrichment	9
+ Help and Support	10
+ Fees and Financial Assistance	12
+ Entry Requirements	14
+ Qualifications Explained	16
+ Programme of Study	17
+ T-Levels	18
+ Apprenticeships	20
+ Our Courses	22
+ How to Apply	23
+ Higher Education at West Thames	64
+ Alumni	66
+ Travel	67
Inside back cover	

ENTRY REQUIREMENTS GUIDE

LEVEL

1

There are no formal requirements, but you may be given an initial assessment to ensure you're pursuing the right course for you.

2

Applicants for Level 2 – intermediate courses should have at least two GCSEs at grade 3 or above and/or a pass in a relevant Level 1 qualification, or relevant experience for mature applicants.

Please note: L2 Science course requires at least two GCSEs at Grade 3 or above, including maths or a pass in a relevant Level 1 numeracy qualification (such as Functional Skills).

3

Applicants for level 3 – advanced courses should have at least four GCSEs at grade 9 – 4, including at least one in GCSE English or Maths at grade 4 or above, or a relevant Level 2 vocational qualification, at merit or distinction (where grades are awarded).

T Levels

Applicants for T Levels should have four GCSEs at grade 4-9. Individual courses may have additional course-specific requirements.

Special thanks to all the staff and students at West Thames College who helped with the production of this prospectus.

All information is correct at time of publication. For most up-to-date information please visit west-thames.ac.uk

*Number 1 College for Student Achievement based on performance for students aged 16-18, 19+ and overall Department of Education.



WELCOME TO WEST THAMES COLLEGE

WELCOME

We are a successful and vibrant Further and Higher Education college based in West London.



We are delighted that you are interested in studying a course with us. We have a range of vocational courses, including apprenticeships and T-Levels to give you the skills and experience you need to fulfil your goals.

Tracy Aust, CEO & Principal

- Our vocational courses are taught by industry professionals, who can share industry insights with you and links to contacts who work in the sector.
- Our strong links with employers provide access to industry leaders and excellent work experience opportunities. We are proud to work with a range of employers including Brentford Community Sports Trust, Sky, L'Oréal and NHS.
- Our campuses include a range of state-of-the-art facilities and workshops, that were described as 'Outstanding' by Ofsted (2021), that enhance the student experience while equipping our students with the skills they need for their progression.

Above all our friendly and committed staff will give you all the support and guidance you need to succeed. The achievement rates of our students are very high - we are London's Number One College for the second year in a row* - which we are incredibly proud of. Our students progress to higher level study, to university, to an apprenticeship, or straight into work with local, regional and national companies.

Your journey to fulfilling your dreams is just beginning and we look forward to welcoming you to West Thames College.

Tracy Aust
CEO & Principal

*Number 1 College for Student Achievement based on performance for students aged 16-18, 19+ and overall Department of Education.

ABOUT US

West Thames College has two campuses - our main campus in Isleworth and our Skills+Logistics Centre in nearby Feltham.

Our college has 'Outstanding Facilities' (OFSTED), offering students access to professional TV production workshops, animation and music studios, a hospital suite with real-life patient simulators, professional hair and beauty salons, a theatre, gym and sports facilities, and

industry-standard workshops for construction and electric vehicles to name just a few.

Our extensive range of courses cover pre-entry to higher education, offering a range of opportunities for progression.

MAIN CAMPUS / ISLEWORTH

Courses available are:

ANIMATION AND GAMES DESIGN

ART & DESIGN

BEAUTY THERAPY

BUSINESS

COMPUTING & ICT

CREATIVE AND DIGITAL TECHNOLOGIES

ENGLISH AND MATHS

ESOL

HAIRDRESSING

HEALTH, SOCIAL CARE AND CHILDCARE

MEDIA

MUSIC

PERFORMING ARTS

SCIENCE

SPECIALIST MAKEUP

SPORT

SUPPORTED LEARNING

TRAVEL, TOURISM AND AVIATION

UNIFORMED PUBLIC SERVICES

SKILLS+LOGISTICS CENTRE / FELTHAM

This centre includes multiple workshops and workspaces that create realistic work environments, allowing students to develop the specific skills required within the industry. You will be taught by real industry professionals, who will pass on their substantial skills and knowledge.

Courses available are:

CONSTRUCTION

LOGISTICS

ENGLISH & MATHS

MOTOR VEHICLE

UPCOMING OPEN DAYS

ISLEWORTH CAMPUS

Wednesday 2 October 2024, 5-6:30pm

Saturday 9 November 2024, 10am-12:30pm

Wednesday 29 January 2025, 5-6:30pm

Saturday 8 March 2025, 10am-12:30pm

Wednesday 18 June 2025, 5-6:30pm

SKILLS+LOGISTICS CENTRE, FELTHAM

Tuesday 8 October 2024, 5-6:30pm

Tuesday 4 February 2025, 5-6:30pm

Tuesday 24 June 2025, 5-6:30pm

REGISTER HERE FOR OPEN DAYS



LIFE OUTSIDE THE CLASSROOM

Life isn't just about learning. West Thames College is a fun place to be, with plenty of activities and outstanding facilities to use.

OUR FACILITIES INCLUDE:



STUDENT COMMON ROOM

Watch music, sport or films on the plasma TV screens, play pool, table tennis, table football and other games, or just meet with friends in our common room and café areas.

GYM

Our gym is equipped with treadmills, cycling and rowing machines, cross trainers, resistance machines and weights to keep you fit and toned.



THEATRE AND FILM STUDIOS

140 seat theatre and state-of-the-art film studios to unleash your creativity in your creative subjects.

HAIR AND BEAUTY SALON

Get thoroughly pampered with a beauty treatment or new hairstyle and buy professional products for a fraction of the normal cost. For bookings and latest offers please call the Salon on 020 8326 2201.

STUDENT ENRICHMENT

STUDENT ACTIVITIES CALENDAR

Get involved in a variety of clubs and societies, to build on your existing interests or to explore new ones. You can take part in tournaments, talent shows, trips, competitions, fundraising activities and cultural awareness events, such as Black History Month and Mental Health Awareness Day.

THE STUDENT UNION

You will automatically become a member of the Student Union which promotes the interests and views of West Thames students. It is run by students for students so you can also be elected to a leadership position on the Student Union Executive Team.

ENRICHMENT, SPORTS TEAMS AND TRAINING

Take part in one of our lunchtime clubs: film, music or gaming clubs to name just a few. Play football, badminton, netball, basketball, cricket, table tennis, volleyball, Zumba, boxing and much more in our sports hall and outdoor pitches. We take our sport seriously – our successful college teams play in leagues and regularly win trophies.

STUDENT AMBASSADORS

Student Ambassadors help promote the College to prospective students and their parents - assisting at open events, award ceremonies, parents' evenings and other such occasions.

STUDENT GOVERNORS

Student governors are elected by their peers to put the opinions of students to the college's governing body. They work with the other governors to improve education and teaching at West Thames.

COURSE REPRESENTATIVES

Course Representatives give feedback from students on their course and work with curriculum managers to make improvements and help resolve any issues. By getting involved you can help make a real difference at West Thames College.

HELP AND SUPPORT

You will have access to a range of support services throughout your time at the college.

We also have an excellent reputation for the additional support we give to our students.

STUDENT SUPPORT

We believe all students should have fair and equal access to their chosen learning programme and all aspects of college life.

A team of Support Assistants provide an individualised approach in class to all students that have disclosed support needs.

Out of class, specialist teachers provide support to help improve literacy, numeracy and study skills and tackle assignments.

If you have a physical, mental health or sensory impairment and/or learning difference, please let us know so that we can make arrangements for you.

Arrangements can include, but are not limited to the following:

- Shared in-class support to access learning in class
- Out of class 1:1 literacy or numeracy sessions in addition to timetabled sessions
- Specialist equipment and/or software
- Adapted material and/or furniture
- Adapted curriculum and/or modified assessment arrangements
- Mentoring
- Referrals for counselling
- Support for curriculum related trips

STUDENT LEARNING ADVISERS

Tutors who you will meet regularly to monitor your progress, attendance and assist with any issues. They can also help you access specialist support services.

LEARNING RESOURCES CENTRE

A range of services to support your studies including computers, study spaces, online and offline resources and helpful staff.

The LRC offers a range of facilities including:

- Staff to help you find what you need and to support you in your studies
- Individual and group study spaces
- A Suite of PCs and Macs
- A dedicated working space for HE students with PCs and Macs
- 93 journals including magazines and newspapers
- e-books
- e-Resources (Encyclopedia Britannica Online, Britannica Image Quest, Emerald Insight, Care Knowledge, Digital Theatre Plus)
- e-Learning resources from the Blended Learning Consortium
- Book/audio packs for learners of English
- Online access to our Library Catalogue and your library account

CAREERS SERVICE

We have a dedicated team of Advisers, who can give the advice, information and support you need to achieve your career goals. Careers advice and guidance is impartial and provided by professionally qualified Careers Advisers who can support with your career planning from before you start your course until you leave the college.

Support available includes:

- Preparing and developing your CV
- Applying to UCAS for university courses
- Helping you gain work experience, or part-time work

COUNSELLING

Talk through problems or stressful situations in complete confidence with a professional counsellor.

WELFARE AND SUPPORT

Contact our team for practical financial advice and help with bursaries and entitlements.

Including:

- Equipment
- Special kits
- Books
- Exam fees
- Art supplies and photographic materials
- Travel and course trips
- Childcare

EMPLOYABILITY COACHES

These advisers will help you prepare for the world of work and equip you with the skills employers need.



Our college nursery offers full and part-time places for children aged 3 months to 5 years, providing a safe and stimulating learning environment for children while their parents study. Funding and subsidies may be available, but places are limited. For an application form and more information please contact the nursery on 020 8326 2318.

FEES AND FINANCIAL ASSISTANCE

COURSES ARE FREE FOR 16-18 YEAR OLDS

There are no tuition or exam fees for UK students on further education courses who start their course when they are under 19 years. However, students taking re-sits may be required to pay the exam registration fee.

UK LEAVING THE EU

16-18 year old EU students used to have the same status as UK students before the UK's withdrawal. However, there will be certain changes to fee structures and immigration status. Please therefore check with the college to clarify your situation.

DBS CHECK

For Health and Social Care and Childcare courses, you will need to pay for a Disclosure and Barring Service (DBS) check before you are accepted onto the course.

MATERIALS

On some courses there will be a charge for specialist kits and materials. Please ask for details at enrolment.



FINANCIAL SUPPORT

We may be able to offer support to help pay for course-related expenses if students can demonstrate financial hardship. Ask for our Student Guide to Financial Support, or talk to a member of staff at the course interview.

FREE COLLEGE MEALS

You may be entitled to free college meals if you or your family are on a low income. Please ask for details at enrolment.

OYSTER CARDS

Full-time students and apprentices living in London may be eligible for free or discounted travel. For further information visit tfl.gov.uk.

BURSARY

Students aged 16-18, aged 19 continuing students, and students aged 19-23 with a final EHCP in place may qualify for regular payments from the bursary fund.

CARE TO LEARN

Helps young parents (aged up to and including 19) with the cost of Ofsted registered childcare and related transport costs.

Find out more:
[west-thames.ac.uk/
financial-support](https://west-thames.ac.uk/financial-support)



ENTRY REQUIREMENTS

COURSE LEVEL AND ENTRY REQUIREMENTS GUIDE

Not sure which course level is right for you? Our handy table below should help.
If you still need assistance, please contact us on 020 8326 2000.

Level	Type of Course
Entry	Entry Level course
1	Foundation level designed to give you an introduction to a subject.
2	Intermediate level designed to develop your knowledge to an intermediate level.
3	Advanced level designed to build on your existing specialist knowledge and how you can apply this to real-life scenarios.
4	Designed to explore the subject in much greater detail, giving you the specialist skills needed for your chosen industry.
5	Designed to continue your learning from Level 4 and apply this knowledge to case studies and a major project.

In addition to the general entry criteria, individual subjects may also have additional entry requirements. Please see the individual information regarding the requirements for each subject course.

Equivalent to	Typical Entry Requirements
N/A	No formal entry requirements.
GCSE grade 3-1	No formal entry requirements.
GCSE grade 7-4	Level 1 qualification or two GCSEs grade 3 or above. Experience of working at a Level 1 standard.
A Levels	Level 2 qualification or four GCSEs grade 9-4.
First year of university	Level 3 qualification or A Level.
Second year of university	Level 4 qualification in a similar subject such as a Higher National Certificate (HNC) or Professional Certificate.

QUALIFICATIONS EXPLAINED

We provide vocational, hand-on training, that is designed to give you the desired skills and knowledge that employers want.

T-LEVELS

- An alternative to A levels and Level 3 Apprenticeships
- A qualification equivalent to three A Levels (Distinction* in T Level is equivalent to A*A*A*)
- You will spend 80% of the course in your learning environment, gaining the skills that employers need. The other 20% is a meaningful industry placement.

Progression:

- Straight into work within a sector
- University study

TECHNICAL QUALIFICATIONS

We run vocational courses (BTEC, Certificates and Diplomas) at levels 1, 2 and 3. These courses provide practical knowledge in your chosen sector, and includes a lot of hands-on learning.

These courses often contain more coursework than formal exams

Progression:

- Straight into work within a sector
- University study
- Higher level apprenticeship
- Higher Education Courses at college

HIGHER EDUCATION

- Provide students with specialist knowledge of that area, for one or two years
- You study at college, and you can progress to university to complete the full degree
- Include practical work experience as part of the course
- Provides students with small class sizes and bespoke facilities to use
- These courses are often for students who are 18+

COURSES WE OFFER ARE:

Level 4

- Level 4 Diploma in Business Administration
- Level 4 Specialist Makeup
- Level 4 Professional Diploma in Technical and Production Practice for the Creative Industries
- Level 4 Certificate in Laser IPL
- Level 4 Award in Skin Blemish Removal
- Higher National Certificate in Applied Biology

Level 5

- Higher National Diploma in Film and TV
- Higher National Diploma in Applied Biology
- CELTA (Certificate in English Language Teaching to Adults)
- Certificate in Education in Further Education and Skills

PROGRAMME OF STUDY

At West Thames College, you choose one core vocational subject.

Alongside this, your programme of study will include:

EMPLOYABILITY AND WORK EXPERIENCE

Such as teamwork and problem solving to get you job-ready

ENGLISH AND/ OR MATHS

Depending on your GCSE results

INDEPENDENT STUDY

Independent learning to improve digital and study skills, collaborate with others and develop positive autonomous learning habits

WORK WITH LEADING EMPLOYERS

West Thames College prides itself on its strong links with employers.

We work with a wide range of companies to provide excellent work experience opportunities as well as providing events such as Aspire. Aspire brings employers on site to run a series of masterclasses and workshops, further developing our students for their next step.



T-LEVELS

T-LEVELS
THE NEXT LEVEL QUALIFICATION

**Qualifications with work placements
to take you to the next level.**

WHAT ARE T-LEVELS?

T-Levels offer:

- An alternative to A levels and Level 3 Apprenticeships
- A qualification equivalent to three A Levels (Distinction* in T Level is equivalent to A*A*A*)
- You will spend 80% of the course in your learning environment, gaining the skills that employers need. The other 20% is a meaningful industry placement.

Progression:

- Straight into work within a sector
- University study



HOW DOES IT WORK?

You will spend 80% of the course in your learning environment, gaining the skills that employers need. The other 20% is a meaningful industry placement, where you put your learnt skills into action.

WHAT SUBJECTS DO WEST THAMES COLLEGE OFFER?

We currently offer T-Levels in the following areas:

- Digital Production & Development
- Health
- Education and Early Years
- On-site Construction
- Healthcare Science
- Management and Administration



DIGITAL PRODUCTION, DESIGN & DEVELOPMENT

- 2 year course
- 9 weeks minimum working with an employer on an industry placement

POTENTIAL CAREERS:

- Web Developer
- Web Designer
- Software Developer
- Computer Games Developer
- E-learning Developer
- User Experience (UX) Designer

EDUCATION AND EARLY YEARS

- 2 year course
- 9 weeks minimum working with an employer on an industry placement

POTENTIAL CAREERS:

- Nursery Worker
- Teaching Assistant
- Learning Mentor
- Playworker
- Portage Home Visitor
- Special Educational Needs Teaching Assistant

HEALTHCARE SCIENCE

- 2 year course
- 9 weeks minimum working with an employer on an industry placement

POTENTIAL CAREERS:

- Healthcare Science Assistant
- Radiography Assistant
- Sterile Services Technician

HEALTH

- 2 year course
- 9 weeks minimum working with an employer on an industry placement

POTENTIAL CAREERS:

- Ambulance Care Assistant
- Emergency Care Assistant
- Healthcare Assistant
- Care Worker
- Palliative Care Assistant
- Dental Nurse

ON-SITE CONSTRUCTION

- 2 year course
- 9 weeks minimum working with an employer on an industry placement

POTENTIAL CAREERS:

- Carpenter
- Shopfitter
- Bricklayer
- Plasterer
- Painter & Decorator

MANAGEMENT AND ADMINISTRATION

- 2 year course
- 9 weeks minimum working with an employer on an industry placement

POTENTIAL CAREERS:

- Office Manager
- Personal Assistant
- Indexer
- Barrister's Clerk
- Administrative Assistant
- Information Scientist
- Secretary

APPRENTICESHIPS EARN AS YOU LEARN

If you want to step straight into the world of work, then choose an apprenticeship.

It's the ideal way to get hands-on experience whilst studying for a qualification.

An apprenticeship typically involves spending four days a week in a work environment gaining practical skills and one day a week studying at the College.

6 STEPS TO APPRENTICESHIP SUCCESS



- 1** Decide which apprenticeship area you are interested in.
- 2** Register on the National Apprenticeship website www.gov.uk/apply-apprenticeship to see all the apprenticeship vacancies across the country.
- 3** Prepare your application – make sure your CV is up to date.
- 4** Apply for positions – go to the apprenticeship tab on our website or visit the National Apprenticeship Service.
- 5** Attend an interview if your application is successful.
- 6** Get the job! Start work and train at the same time!



APPRENTICESHIPS WE OFFER:

DIGITAL

Cyber Security Technician (L3)

Data Technician (L3)

Multi-Channel Marketer (L3)

Digital Support Technician (L3)

IT Helpdesk (L3)

IT Solutions Technician (L3)

Radio Network Technician (L3)

Software Development Tech (L3)

Applications Support Lead (L4)

Business Analyst (L4)

Cyber Security Technologist (L4)

Data Analyst (L4)

DevOps Engineer (L4)

Digital Accessibility Specialist (L4)

Network Engineer (L4)

Software Developer (L4)

Software Tester (L4)

Digital Learning Designer (L5)

BUSINESS

Business Administration (L3)

Customer Service (L2)

Customer Service (L3)

Team Leader (L3)

Quality Practitioner (L4)

Operational Management (L5)

Recruitment Resourcer (L2)

Recruitment Consultant (L3)

LOGISTICS

Express Delivery (L2)

International Freight Forwarding (L3)

CONSTRUCTION

Property Maintenance Operative (L2)

Electrician Installation and Maintenance (3)

Painter/Decorator (L2)

Find out more: west-thames.ac.uk/apprenticeships



OUR COURSES

MAIN CAMPUS ISLEWORTH

Business	24
----------	----

Computing and ICT	26
-------------------	----

Health, Social Care and Childcare	28
-----------------------------------	----

Science	30
---------	----

Art and Design	32
----------------	----

Animation and Games Design	34
----------------------------	----

Creative and Digital Technologies	36
-----------------------------------	----

Media	38
-------	----

Music	40
-------	----

Performing Arts	42
-----------------	----

Hairdressing	44
--------------	----

Beauty Therapy	46
----------------	----

Specialist Makeup	48
-------------------	----

Sport	50
-------	----

Uniformed Public Services	52
---------------------------	----

Travel, Tourism and Aviation	54
------------------------------	----

ESOL	56
------	----

Supported Learning	58
--------------------	----

SKILLS+LOGISTICS CENTRE FELTHAM

Construction and Building Trades	60
----------------------------------	----

Motor Vehicle	62
---------------	----



APPLY IN THREE STEPS

1

Visit our website and apply for the course you are interested in

2

We will then contact you to invite you to the College for an interview, including bringing a portfolio or taking part in an audition

3

If successful, you will receive an offer, depending on your entry requirements

4

You will then be invited to come in for enrolment, which will start in August

Apply online at
west-thames.ac.uk



DISABILITY SUPPORT

If you have a physical, mental health or sensory impairment and/or learning disability, please let us know when you apply so that we can make arrangements for you.



BUSINESS

Studying a business course at college can be the first step towards a career in areas such as sales, marketing and public relations (PR), accounting, management or human resources (HR).

Sales careers include visual merchandising and working in a buying/purchasing department. Marketing and PR involves promoting the products and the positive image of the company itself. Management and HR help to keep an organisation running efficiently, including hiring and retaining the right people.

CAREERS/SALARY EXPECTATIONS

Business project manager

Up to £75,000

Business development manager

Up to £64,000

Financial adviser

Up to £45,000



ABOUT OUR BUSINESS COURSES

Our courses enable you to explore these roles, learn about the business environment, and decide where your own interests lie.

You will engage with businesses such as Ajar Technologies and go on industry visits to the Houses of Parliament, Heathrow Airport or Sky.

LEVEL 1

Business and Travel with ESOL

1 year

Foundation Business and Travel

1 year

APPLY NOW

Apply now via our website.

Scan the code to find out more about our courses and apply for next September.



LEVEL 2

Certificate in Business

1 year



COURSE PROGRESSION AT WEST THAMES

Take an apprenticeship or progress to a course at a higher level:

Business Administration

Level 4

LEVEL 3

Business Studies (BTEC)

2 years

Diploma for Business Administrators

2 years

T LEVEL

Management & Administration

2 years

ENTRY REQUIREMENTS

LEVEL 1 A successful interview. You will also need to complete an assessment for some courses.

LEVEL 2 2 GCSEs at grade 3 or above. Level 1 functional skills English and maths.

LEVEL 3 At least 4 GCSEs at grade 9-4, a merit or distinction at Level 2 with functional skills in English and maths.

See our website west-thames.ac.uk for specific course entry requirements.

COMPUTING AND ICT

From smartphones and Wi-Fi to hashtags and instant messaging, technology dramatically affects the way we communicate.

If you're interested in understanding how digital information is spread, or solving problems with technology, then consider one of our courses in Computing and ICT.

CAREERS/SALARY EXPECTATIONS

Cyber intelligence officer

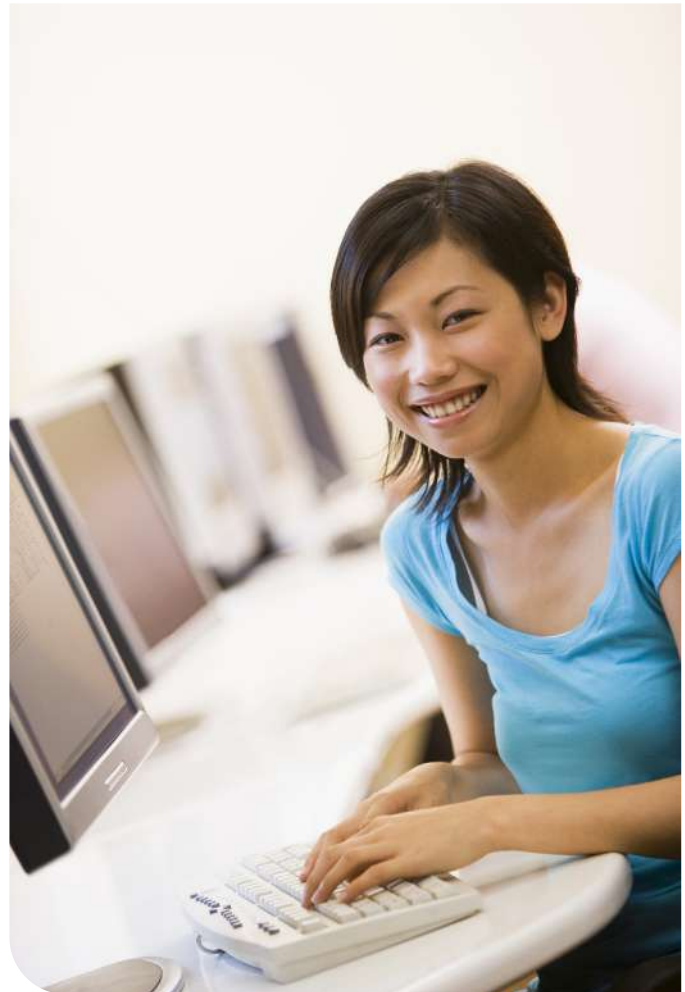
Up to £50,000

User Experience (UX) designer

Up to £50,000

IT Support Technician

Up to £35,000



ABOUT OUR COMPUTING AND ICT COURSES

You will learn in specialist ICT suites, take part in work experience and visit local businesses. West Thames College is a certified Cisco Academy, giving you the chance to gain additional qualifications which are in high demand in the industry. You can get involved in live briefs and competitions, such as Worldskills UK. We have strong links with local businesses such as Sky and Cisco that offer work experience and apprenticeships.

LEVEL 1

Award in Cybersecurity with ESOL

1 year

Award in Programming

1 year

LEVEL 2

Information and Creative Technology

1 year

Digital and IT Skills

1 year

LEVEL 3

Computing

2 years

Networking and Cybersecurity

2 years

APPLY NOW

Apply now via our website.

Scan the code to find out more about our courses and apply for next September.



COURSE PROGRESSION AT WEST THAMES

Take an apprenticeship or progress to a course at a higher level.

T-LEVEL

Digital Production, Design & Development

2 years

ENTRY REQUIREMENTS

LEVEL 1 A successful interview. You will also need to complete an assessment for some courses.

LEVEL 2 2 GCSEs at grade 3 or above. Level 1 functional skills English and maths.

LEVEL 3 At least 4 GCSEs at grade 9-4, a merit or distinction at Level 2 with functional skills in English and maths.

See our website [west-thames.ac.uk](https://www.west-thames.ac.uk) for specific course entry requirements.

HEALTH, SOCIAL CARE AND CHILDCARE

Working in health and social care or childcare is a great way to make a difference, by helping people individually or driving improvements in society.

These careers are emotionally challenging but can also be highly rewarding. To thrive you must be able to build strong relationships with others, your colleagues, patients and service users.

CAREERS/SALARY EXPECTATIONS

Social services managers and directors
Up to £68,000

Counsellor
Up to £47,000

Adult Nurse
Starting at Band 5 £40,000



ABOUT OUR HEALTH, SOCIAL CARE AND CHILDCARE COURSES

Our courses have high success and progression rates and you will develop the knowledge and skills relevant to the Health and Social Care industry.

You will undertake work placements in health and care settings, such as residential homes, pharmacies, children's nurseries and care homes for people with disabilities so you can develop experience in the industry. Alternatively we have strong links with a number of universities if you wish to progress to a degree programme after your course.

LEVEL 1

NCFE CACHE Certificate in Introduction to Health, Social Care and Children's and Young People's Settings

1 year

LEVEL 2

NCFE CACHE Understanding Working in the Health Sector

1 year

T-LEVEL

Technical Qualification in Health

2 years

Education and Early Years

2 years

ENTRY REQUIREMENTS

LEVEL 1 A successful interview. You will also need to complete an assessment for some courses.

LEVEL 2 2 GCSEs at grade 3 or above. Level 1 functional skills English and maths.

LEVEL 3 At least 4 GCSEs at grade 9-4, a merit or distinction at Level 2 with functional skills in English and maths.

See our website west-thames.ac.uk for specific course entry requirements.

APPLY NOW

Apply now via our website.

Scan the code to find out more about our courses and apply for next September.



Health & Care



Childcare



COURSE PROGRESSION AT WEST THAMES

Take an apprenticeship or progress to a course at a higher level.

SCIENCE

There are great careers available if you have an interest in science.

You could work in pharmaceuticals, biotech or crop research, chemical development and manufacturing, food production and development, monitoring various aspects of the environment, veterinary medicine, or use forensic science in the field of archaeology.

CAREERS/SALARY EXPECTATIONS

Pharmacologist

Up to £50,000

Biochemist

Up to £50,000

Laboratory technicians

Starting at Band 5 £26,000



ABOUT OUR SCIENCE COURSES

Our laboratories have specialist equipment including DNA analysis equipment and an advanced optical telescope, and we have links with local plant science industries.

You will attend workshops on topics such as radiography, physics and electricity. You will gain work experience, visit museums, universities and attend conferences, and take part in National Science Week.

LEVEL 2

Pearson BTEC First Extended Certificate in Applied Science

1 year

LEVEL 3

Pearson BTEC National Extended Diploma in Applied Science

2 years

T LEVEL

Healthcare Science

2 years

APPLY NOW

Apply now via our website.

Scan the code to find out more about our courses and apply for next September.



COURSE PROGRESSION AT WEST THAMES

Take an apprenticeship or progress to a course at a higher level:

HNC/HND Biology

2 years

ENTRY REQUIREMENTS

LEVEL 1 A successful interview. You will also need to complete an assessment for some courses.

LEVEL 2 2 GCSEs at grade 3 or above. Level 1 functional skills English and maths.

LEVEL 3 At least 4 GCSEs at grades 9-4, one of which must be in Science, a merit or distinction at Level 2 Science. You must also have at least a pass at grade 3 for GCSE maths.

See our website west-thames.ac.uk for specific course entry requirements.

ART AND DESIGN

Careers in Art and Design can include areas such as prop design, web design, packaging design for the food and drink industry, or fine arts such as jewellery design, sculpture, painting and photography.

You can work on a freelance basis, as part of a design agency, or in the design department of a large company.

CAREERS/SALARY EXPECTATIONS

Arts administrator

Up to £30,000

Graphic designer

Up to £35,000

Model maker

Up to £31,000



ABOUT OUR ART AND DESIGN COURSES

Our courses are accredited by the University of the Arts London, one of the top universities in the world for art and design.

We have well-equipped specialist studios for photography, fine art, 3D design, fashion and graphics, and our teachers are practising designers with industry experience.

Students exhibit their work to the public at our annual Creative Arts Festival and progress to top universities and art schools such as Goldsmiths and Central St Martin's.

LEVEL 1

Creative Design

1 year

LEVEL 2

Creative Design

1 year

LEVEL 3

Creative and Digital Design

2 years

APPLY NOW

Apply now via our website.

Scan the code to find out more about our courses and apply for next September.



COURSE PROGRESSION AT WEST THAMES

Take an apprenticeship or progress to a course at a higher level.

ual: university of the arts london

These FE courses are accredited by the University of the Arts London's Awarding Body, the only specialist art, design and creative industries awarding organisation in England.

ENTRY REQUIREMENTS

LEVEL 1 A successful interview. You will also need to complete an assessment for some courses.

LEVEL 2 2 GCSEs at grade 3 or above. Level 1 functional skills English and maths.

LEVEL 3 At least 4 GCSEs at grade 9-4, a merit or distinction at Level 2 with functional skills in English and maths.

See our website west-thames.ac.uk for specific course entry requirements.

ANIMATION AND GAMES DESIGN

Animators are in very high demand in the UK and can be employed in areas of the entertainment industry such as TV, film or video games.

Their work involves creating 2D and 3D models of characters, props and scenery, using CGI software to add movement, and making sure that animation integrates seamlessly with dialogue and music.

CAREERS/SALARY EXPECTATIONS

Computer games developer

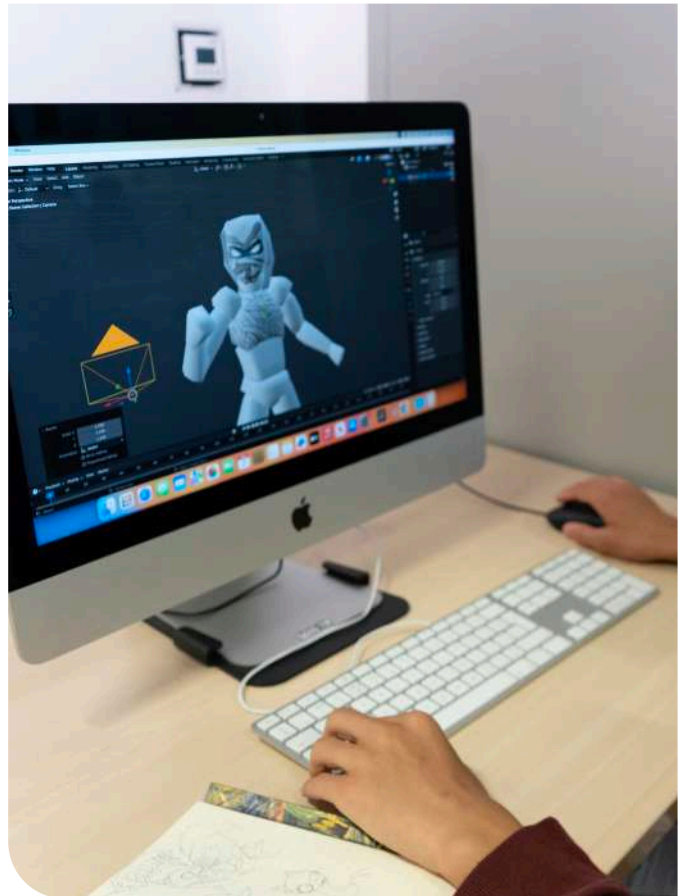
Up to £70,000

Software developer

Up to £70,000

App developer

Up to £55,000



ABOUT OUR ANIMATION AND GAMES DESIGN COURSES

This type of work requires both artistic talent and technical skills, which students will develop in our multimedia suites using industry standard software such as Maya, Mudbox, Unity, After Effects and Photoshop.

We believe that students need to be engaged in every aspect of this subject and foster imaginative skills to feed back into their design work – and the courses are also designed to be fun!

LEVEL 1

Digital Design

1 year

LEVEL 2

Digital Design

(Introduction to Animation and Games)

1 year

LEVEL 3

Animation and Games Design

2 years

ual: university
of the arts
london

These FE courses are accredited by the University of the Arts London's Awarding Body, the only specialist art, design and creative industries awarding organisation in England.

APPLY NOW

Apply now via our website.

Scan the code to find out more about our courses and apply for next September.



COURSE PROGRESSION AT WEST THAMES

Take an apprenticeship or progress to a course at a higher level.

T LEVEL

Digital Production, Design & Development

2 years

ENTRY REQUIREMENTS

LEVEL 1 A successful interview. You will also need to complete an assessment for some courses.

LEVEL 2 2 GCSEs at grade 3 or above. Level 1 functional skills English and maths.

LEVEL 3 At least 4 GCSEs at grade 9-4, a merit or distinction at Level 2 with functional skills in English and maths.

See our website west-thames.ac.uk for specific course entry requirements.

CREATIVE AND DIGITAL TECHNOLOGIES

Creative and digital media includes online platforms, TV, radio, console games and more.

People who work in this industry can be responsible for creating content, creating websites or apps, coding, designing and testing games.

CAREERS/SALARY EXPECTATIONS

Web designer

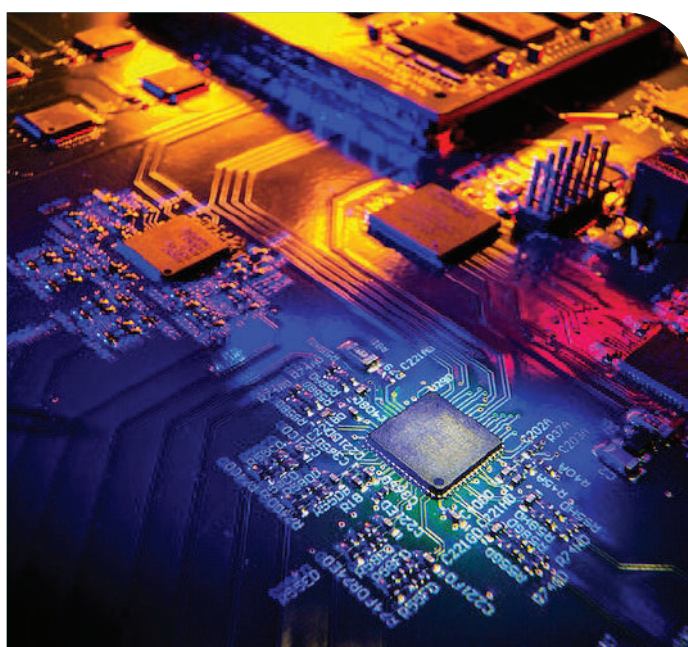
Up to £40,000

Web developer

Up to £60,000

IT Project Manager

Up to £60,000



ABOUT OUR CREATIVE AND DIGITAL TECHNOLOGIES COURSES

It's a hugely important part of the UK economy with great career opportunities. On our courses you will use professional software including Final Cut Pro, Photoshop, After Effects and InDesign, and work on Apple Macs for editing and production.

Links with top employers will give you opportunities to gain work experience while working on live briefs.

LEVEL 1

Digital Design

1 year

LEVEL 2

Digital Arts

(Introduction to Animation and Games)

1 year

LEVEL 3

Animation and Games Design

(Introduction to Animation and Games)

2 years

ual: university
of the arts
london

These FE courses are accredited by the University of the Arts London's Awarding Body, the only specialist art, design and creative industries awarding organisation in England.

APPLY NOW

Apply now via our website.

Scan the code to find out more about our courses and apply for next September.



COURSE PROGRESSION AT WEST THAMES

Take an apprenticeship or progress to a course at a higher level.

T LEVEL

Digital Production, Design & Development

2 years

ENTRY REQUIREMENTS

LEVEL 1 A successful interview. You will also need to complete an assessment for some courses.

LEVEL 2 2 GCSEs at grade 3 or above. Level 1 functional skills English and maths.

LEVEL 3 At least 4 GCSEs at grade 9-4, a merit or distinction at Level 2 with functional skills in English and maths.

See our website [west-thames.ac.uk](https://www.west-thames.ac.uk) for specific course entry requirements.

MEDIA

From TV and film to the internet and radio, media is everywhere, both entertaining and influencing us. Employers in this field look for people who are enthusiastic, versatile and able to build relationships within a team.

Job roles can involve working on content or in administration, behind the scenes as a technician, director, researcher or producer, or in front of the camera as a broadcaster or radio presenter.

CAREERS/SALARY EXPECTATIONS

Audio visual technician

Up to £35,000

Radio Broadcast Assistant

Up to £29,000

TV or film sound technician

Up to £35,000



ABOUT OUR MEDIA COURSES

When you study on our courses you will use our TV studio with professional cameras and chroma key sound effects, sound recording studios with ProTools HD, Logic Pro and surround sound, digital video editing suites Final Cut Pro, audio/MIDI music production and multimedia suites.

You will perform and engineer live gigs, work on live briefs, get involved in our Creative Arts Festival, and gain exciting work placements so that you will be prepared to find employment in leading media and production companies around London.

LEVEL 2

Creative Media Production

1 year

APPLY NOW

Apply now via our website.

Scan the code to find out more about our courses and apply for next September.



LEVEL 3

Creative Media Production

(Television and Film)

1 year (90 credit diploma)

2 years (extended diploma)



COURSE PROGRESSION AT WEST THAMES

Progress to an appropriate course at a higher level, including our Higher Education course:

Professional Diploma in Technical and Production Practice for the Creative Industries

Level 4

ual: university of the arts london

These FE courses are accredited by the University of the Arts London's Awarding Body, the only specialist art, design and creative industries awarding organisation in England.

ENTRY REQUIREMENTS

LEVEL 1 A successful interview. You will also need to complete an assessment for some courses.

LEVEL 2 2 GCSEs at grade 3 or above. Level 1 functional skills English and maths.

LEVEL 3 At least 4 GCSEs at grade 9-4, a merit or distinction at Level 2 with functional skills in English and maths.

See our website west-thames.ac.uk for specific course entry requirements.

MUSIC

The UK music industry is diverse and fast-moving and there are many opportunities for those with passion, talent and drive.

The wide range of careers in music includes songwriting, live entertainment, music education or production, artist or tour management, promotion or music journalism. There's also a career to be made in composing music for films, TV and theatre.

CAREERS/SALARY EXPECTATIONS

Journalist

Up to £40,000

Music promotions manager

Up to £65,000

Music teacher

Up to £43,000



ABOUT OUR MUSIC COURSES

At West Thames College you'll gain the skills you need in our well-equipped music technology production suites and recording studios, using the latest software such as Logic Pro X, Pro Tools and Reason.

You will go on industry visits to EMI and the Royal Opera House, and organise, engineer and perform in live gigs such as Oxjam and the Creative Arts Festival. Previous students have had successful careers as musicians or gone on to work for Sky, Kiss FM and Richmond Theatre.

LEVEL 1**Music and Media**

1 year

LEVEL 2**Contemporary Music**

(Performance/Technology)

1 year

LEVEL 3**Contemporary Music**

(Performance/Technology)

1 year (90 credit diploma)

2 years (extended diploma)

APPLY NOW

Apply now via our website.

Scan the code to find out more about our courses and apply for next September.

**COURSE PROGRESSION AT WEST THAMES**

Take an apprenticeship or progress to a course at a higher level.

ual: university of the arts london

These FE courses are accredited by the University of the Arts London's Awarding Body, the only specialist art, design and creative industries awarding organisation in England.

ENTRY REQUIREMENTS

LEVEL 1 A successful interview. You will also need to complete an assessment for some courses.

LEVEL 2 2 GCSEs at grade 3 or above. Level 1 functional skills English and maths.

LEVEL 3 At least 4 GCSEs at grade 9-4, a merit or distinction at Level 2 with functional skills in English and maths.

See our website west-thames.ac.uk for specific course entry requirements.

PERFORMING ARTS

Careers in performing arts are challenging but highly rewarding, with a host of job opportunities both offstage and in the spotlight.

An entire team is needed to create a performance: not just actors, but directors, producers, set designers, choreographers and lighting technicians.

CAREERS/SALARY EXPECTATIONS

Community arts worker
Up to £29,000

Stage manager
Up to £48,000

Costume designer
Up to £35,000



ABOUT OUR PERFORMING ARTS COURSES

Our facilities include dance studios and a 140-seat theatre with professional sound and lighting rig. Our teachers have exceptional industry experience and you will take part in workshops led by directors and industry professionals.

You will gain work experience in the industry and visit prestigious West End venues such as Sadler's Wells, the Donmar Warehouse and Lyric Theatre Hammersmith. We have a great record for success, with previous students starring in film, TV and theatre, performing in dance companies and featuring on ITV's Britain's Got Talent, as well as finding work behind the scenes as technicians or in costume and makeup departments.



LEVEL 2

Performing Arts (Acting)

1 year

APPLY NOW

Apply now via our website.

Scan the code to find out more about our courses and apply for next September.



LEVEL 3

Performing Arts (Acting)

1 year (90 credit diploma)
2 years (extended diploma)



COURSE PROGRESSION AT WEST THAMES

Take an apprenticeship or progress to a course at a higher level.

ual: university
of the arts
london

These FE courses are accredited by the University of the Arts London's Awarding Body, the only specialist art, design and creative industries awarding organisation in England.

ENTRY REQUIREMENTS

LEVEL 1 A successful interview. You will also need to complete an assessment for some courses.

LEVEL 2 2 GCSEs at grade 3 or above. Level 1 functional skills English and maths.

LEVEL 3 At least 4 GCSEs at grade 9-4, a merit or distinction at Level 2 with functional skills in English and maths.

See our website west-thames.ac.uk for specific course entry requirements.

HAIRDRESSING

Hairdressing isn't just about working in a salon – if you have the talent and a good work ethic, hairdressing skills can take you around the world, behind the scenes at fashion shows or into careers in film, TV or theatre.

CAREERS/SALARY EXPECTATIONS

Hairdressing and beauty salon managers and proprietors

Up to £27,000

Hairdressers and barbers

Up to £30,000



ABOUT OUR HAIRDRESSING COURSES

Our courses have high success rates and are staffed by teachers with extensive professional experience. You will train in our professional hair salons, which are open to the public, so you can develop your customer service skills, as well as taking part in industry visits and exhibitions in the UK.

Our students have gained a lot of success and often win local and national competitions, as well as hosting WorldSkills UK competitions in our own salon. Links with L'Oreal ensure that students use the best products.

Our alumni have worked as hairstylists and wig dressers in West End shows, on TV, feature films, catwalk shows and advertising campaigns.

LEVEL 1

Foundation Hairdressing

1 year

LEVEL 2

Hairdressing

1 year

Barbering

1 year

Hair and Media Makeup Studies

1 year

LEVEL 3

Hairdressing

1 year

APPLY NOW

Apply now via our website.

Scan the code to find out more about our courses and apply for next September.



COURSE PROGRESSION AT WEST THAMES

Take an apprenticeship or progress to a course at a higher level.

ENTRY REQUIREMENTS

LEVEL 1 A successful interview. You will also need to complete an assessment for some courses.

LEVEL 2 2 GCSEs at grade 3 or above. Level 1 functional skills English and maths.

LEVEL 3 At least 4 GCSEs at grade 9-4, a merit or distinction at Level 2 with functional skills in English and maths.

See our website [west-thames.ac.uk](https://www.west-thames.ac.uk) for specific course entry requirements.

BEAUTY THERAPY

No matter what your interests, there is a career path in beauty therapy to suit you. Teachers at West Thames College have professional industry experience and our beauty salons are open to the public, giving you opportunities to develop your client handling skills and master the latest treatments.

You will also develop skills in salon management, administration and retail, preparing you for a range of different job roles.

CAREERS/SALARY EXPECTATIONS

Consultant

Up to £25,000

Nail technician

Up to £25,000



ABOUT OUR BEAUTY THERAPY COURSES

You will learn how to perform a range of professional beauty treatments in our modern, well equipped training salons within this exciting industry.

We have links with various employers and industry leaders such as Dermalogica, Fake Bake and MAC.

After leaving the College, students have become beauty therapists, spa therapists, makeup artists and cruise ship therapists, as well as opening their own salons.

LEVEL 1

Foundation Beauty Therapy

1 year

LEVEL 2

Beauty Therapy

1 year

LEVEL 3

Beauty Therapy

1 year

APPLY NOW

Apply now via our website.

Scan the code to find out more about our courses and apply for next September.



COURSE PROGRESSION AT WEST THAMES

Take an apprenticeship or progress to a course at a higher level:

Advanced Beauty Therapy

Level 4

ENTRY REQUIREMENTS

LEVEL 1 A successful interview. You will also need to complete an assessment for some courses.

LEVEL 2 2 GCSEs at grade 3 or above. Level 1 functional skills English and maths.

LEVEL 3 At least 4 GCSEs at grade 9-4, a merit or distinction at Level 2 with functional skills in English and maths.

See our website west-thames.ac.uk for specific course entry requirements.

SPECIALIST MAKEUP

Our professional specialist makeup courses have an outstanding reputation – our students have won the World Body Painting Championships twice.

CAREERS/SALARY EXPECTATIONS

Freelance makeup designer

Average £300 per day

Counter makeup artist

£13-25K, plus commission



ABOUT OUR SPECIALIST MAKEUP COURSES

You'll work in our professional makeup studios and 140-seat theatre and learn from professional, award-winning teachers with extensive industry experience. You will take part in a range of competitions as well as benefit from our fantastic industry links with Illamasqua, MAC, Makeup Forever, L'Oreal and Charles Fox. We also use makeup kits by Revolution Makeup, ensuring that you use the best products on your course.

Our alumni have gone on to work on music videos and TV and magazine adverts, as well as working on West End Shows such as The Book of Mormon and Jesus Christ Superstar, as well as in TV and Film productions such as The Crown on Netflix, HBO's Game of Thrones, and films including Fantastic Beasts and Guardians of the Galaxy.

LEVEL 2

Hair and Media Makeup Studies

1 year

APPLY NOW

Apply now via our website.

Scan the code to find out more about our courses and apply for next September.



LEVEL 3

Theatrical Media Makeup

1 year



COURSE PROGRESSION AT WEST THAMES

Take an apprenticeship or progress to a course at a higher level:

Specialist Makeup

Level 4

ENTRY REQUIREMENTS

LEVEL 1 A successful interview. You will also need to complete an assessment for some courses.

LEVEL 2 2 GCSEs at grade 3 or above. Level 1 functional skills English and maths.

LEVEL 3 At least 4 GCSEs at grade 9-4, a merit or distinction at Level 2 with functional skills in English and maths.

See our website west-thames.ac.uk for specific course entry requirements.

SPORT



Do you enjoy being active or have a passion for sport? Working in the sport and active leisure industry is a great way to combine doing what you enjoy with paid work.

There are a range of careers to choose from such as, sports journalism and photography, personal training, sports nutrition and coaching, or you can play your chosen sport professionally.

CAREERS/SALARY EXPECTATIONS

Leisure and sports managers
Up to £37,000

Sports coach
Up to £28,000

Sports and leisure assistants
Up to £21,000

ABOUT OUR SPORT COURSES

Our experienced sports professionals will develop your skills and help you gain qualifications in sports leadership and coaching. You'll use our sports hall, fitness suite and outdoor pitches, and take part in activities such as coaching and a wide variety of sports.

You'll go on trips and visits to London stadiums and health clubs. Also you can join the College's successful sports teams.



LEVEL 1

Foundation Sport with Public Services

1 year

LEVEL 2

Sport

1 year

LEVEL 3

Sport

2 years

LEVEL 2+3

Brentford FC CST Elite Development Programme

2 years

Study at college and develop your footballing skills with Brentford FC's CST coaching staff and play against other teams in a league.



APPLY NOW

Apply now via our website.

Scan the code to find out more about our courses and apply for next September.



COURSE PROGRESSION AT WEST THAMES

Progress to an appropriate course at a higher level or the Brentford FC CST Programme.

ENTRY REQUIREMENTS

LEVEL 1 A successful interview. You will also need to complete an assessment for some courses.

LEVEL 2 2 GCSEs at grade 3 or above. Level 1 functional skills English and maths.

LEVEL 3 At least 4 GCSEs at grade 9-4, a merit or distinction at Level 2 with functional skills in English and maths.

See our website west-thames.ac.uk for specific course entry requirements.

UNIFORMED PUBLIC SERVICES

Prepare for a career in one of the uniformed services – including the fire service, paramedics, police or armed forces – with our Public Services courses.

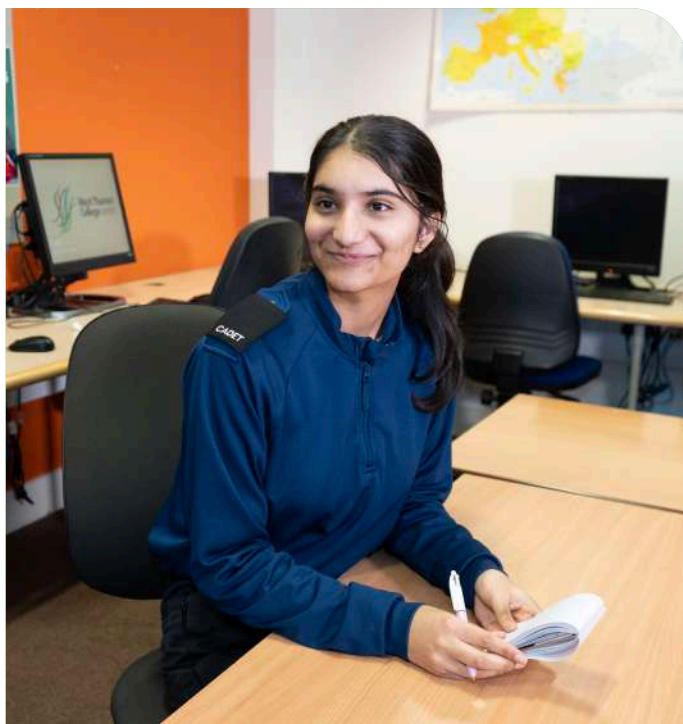
Our staff have experience in these fields and will help you build the skills you need to succeed.

CAREERS/SALARY EXPECTATIONS

Police officers (sergeant and below)
Up to £41,000

Paramedic
Up to £39,000

RAF air officer
Up to £39,000



ABOUT OUR PUBLIC SERVICES COURSES

You will take part in unique enrichment opportunities and outdoor activities like camping, canoeing, orienteering, abseiling and climbing. You will also visit the Crown Court to have first-hand knowledge of the legal system and variety of roles within the organisation.

Alumni from these courses have gone to work for the Metropolitan Police, fire departments, Royal Marines, Parachute Regiment, MI5 and the ambulance service as a paramedic.

LEVEL 1

Foundation Public Services and Sport

1 year

LEVEL 2

Uniformed Public Services

1 year

LEVEL 3

Uniformed Public Services

2 years

APPLY NOW

Apply now via our website.

Scan the code to find out more about our courses and apply for next September.



COURSE PROGRESSION AT WEST THAMES

Take an apprenticeship or progress to a course at a higher level.

ENTRY REQUIREMENTS

LEVEL 1 A successful interview. You will also need to complete an assessment for some courses.

LEVEL 2 2 GCSEs at grade 3 or above. Level 1 functional skills English and maths.

LEVEL 3 At least 4 GCSEs at grade 9-4, a merit or distinction at Level 2 with functional skills in English and maths.

See our website [west-thames.ac.uk](https://www.west-thames.ac.uk) for specific course entry requirements.

TRAVEL, TOURISM AND AVIATION

Our location close to Heathrow makes West Thames College the ideal place to study travel, tourism and aviation. Careers in this industry are varied: you might work at a theme park, heritage site or other visitor attractions, or in the aviation and rail sectors, accommodation services in hotels, hostels or holiday parks, organise outdoor activities or co-ordinate tours, to name just a few.

CAREERS/SALARY EXPECTATIONS

Cabin crew

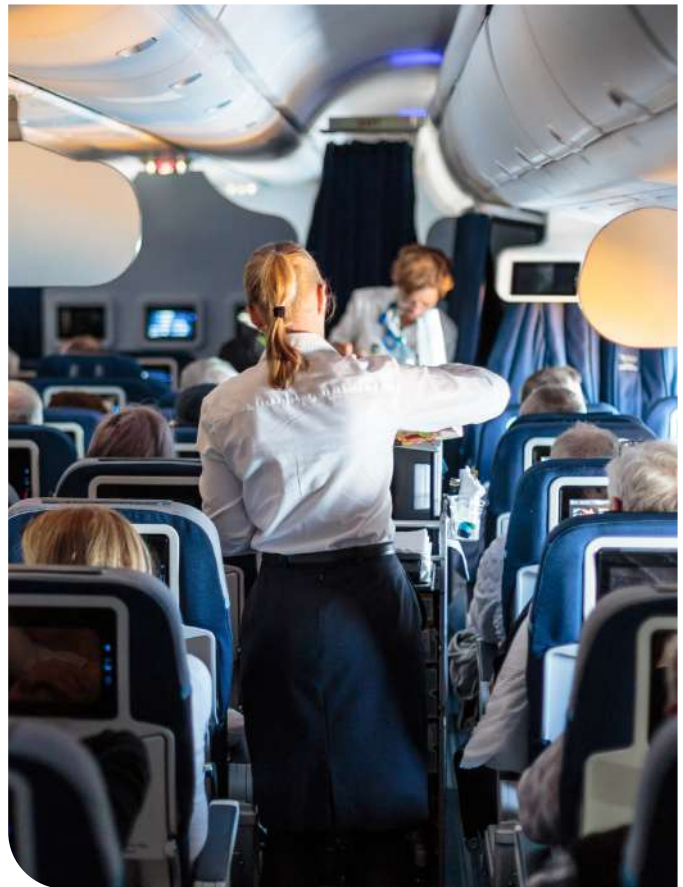
Up to £30,000

Travel agent

Up to £27,000

Tourist attraction general manager

Up to £45,000



ABOUT OUR TRAVEL, TOURISM AND AVIATION COURSES

We have close links with the International Air Transport Association (IATA) for work experience placements, workshops and guest speakers. Students visit the World Travel Market exhibition and have opportunities for trips to London tourist attractions, European cities, hotels and theme parks.

You will gain the specific skills and knowledge required for a career in this industry.

LEVEL 1

Travel and Tourism with ESOL

1 year

Foundation Business and Travel

1 year

LEVEL 2

Travel and Tourism

1 year

Aviation and Cabin Crew

1 year

LEVEL 3

Travel and Tourism

2 years

Aviation Operations

2 years

ENTRY REQUIREMENTS

LEVEL 1 A successful interview. You will also need to complete an assessment for some courses.

LEVEL 2 2 GCSEs at grade 3 or above. Level 1 functional skills English and maths.

LEVEL 3 At least 4 GCSEs at grade 9-4, a merit or distinction at Level 2 with functional skills in English and maths.

See our website west-thames.ac.uk for specific course entry requirements.

APPLY NOW

Apply now via our website.

Scan the code to find out more about our courses and apply for next September.



COURSE PROGRESSION AT WEST THAMES

Take an apprenticeship or progress to a course at a higher level.

ESOL



(ENGLISH FOR SPEAKERS OF OTHER LANGUAGES)

Improving your English can help you get more out of life in the UK. It will also help if you want to study, improve your CV, find a job or just become more confident using the language.

ABOUT OUR ESOL COURSES

You will learn speaking, reading, writing, maths, digital and employability skills, and go on trips to London museums and tourist attractions, such as the Houses of Parliament.

Supportive teachers will help you build your confidence so that you can progress quickly and gain qualifications.



Ascentis Skills for Life

ESOL for 16-18s

1 year

APPLY NOW

Apply now via our website.

Scan the code to find out more about our courses and apply for next September.



COURSE PROGRESSION AT WEST THAMES

Our ESOL students progress to other courses at the college, including:

- Business and IT with ESOL
- Travel with ESOL
- Creating Digital Products with ESOL

ENTRY REQUIREMENTS

LEVEL 1 A successful interview. You will also need to complete an assessment for some courses.

LEVEL 2 2 GCSEs at grade 3 or above. Level 1 functional skills English and maths.

LEVEL 3 At least 4 GCSEs at grade 9-4, a merit or distinction at Level 2 with functional skills in English and maths.

See our website west-thames.ac.uk for specific course entry requirements.

SUPPORTED LEARNING

Our Supported Learning courses are designed for all abilities and will build confidence, independence, social and personal skills in a supportive environment.

We have state-of-the-art equipment and purpose-built areas for learning. This includes a fully equipped kitchen and café, a beautiful large garden and horticulture area as well as business administration and art rooms. We also have a dedicated classroom and a sensory room for students with complex or profound disabilities.

CAREERS/SALARY EXPECTATIONS

Government agencies, other employment support organisations and schemes such as the Project SEARCH programme run by the College, provide work experience and help students enter into long term employment. West Thames College is itself a 'Disability Confident' employer.

This accreditation is awarded to employers who have committed to supporting disabled people.



ABOUT OUR SUPPORTED LEARNING COURSES

Through our vocational curriculum, students study hospitality and catering and run our Bubble Café. They also study gardening and horticulture and business administration with enterprise.

Our students play football in the Surrey LDD league, and feature small class drama workshops. Courses benefit from small class sizes and students will take part in community events as well as a range of enrichment activities.

Work experience is available at Thorpe Park, the Twickenham Rugby Stadium Hotel and the London Borough of Hounslow through Project SEARCH, a programme that has been recognised as one of the best of its kind in Europe.



PRE-ENTRY

Learning for Independent Living and Personal Development

ENTRY 2

Entry to Vocational Education and Skill Builders

ENTRY 3

Entry to Vocational Education and Skill Builders

LEVEL 1



Entry to Vocational Education and Skill Builders

Project SEARCH with London Borough of Hounslow, Thorpe Park and the Twickenham Rugby Stadium Hotel.

Project Search is a work-based programme for young people with learning disabilities, which supports their move from education to employment. Students have an extended work experience placement at either Thorpe Park, the Twickenham Rugby Stadium Hotel or Hounslow House, taught by a West Thames College teacher and supported by a full-time job coach.

ENTRY REQUIREMENTS

Entry requirements based on individual needs
See our website west-thames.ac.uk for specific course entry requirements.

APPLY NOW

Apply now via our website.

Scan the code to find out more about our courses and apply for next September.



COURSE PROGRESSION AT WEST THAMES

Take an apprenticeship or progress to a course at a higher level.

CONSTRUCTION AND BUILDING TRADES

There is a huge range of career choices in the construction industry which can involve designing, planning and project management as well as hands-on practical work.

Construction is about designing and building the environment around us, with a number of different organisations working together. So you could be employed by a large or small company, or even be your own boss as a self-employed tradesperson.

CAREERS/SALARY EXPECTATIONS

Plumber

Up to £40,000

Painter and decorator

Up to £32,000

Site manager

Up to £45,000



ABOUT OUR CONSTRUCTION AND BUILDING TRADES COURSES

Our specialist construction workshops at the Skills+Logistics Centre are equipped for all the trade skills: plumbing, carpentry, painting and decorating and electrical installation.

Our highly skilled tutors have experience in the building trades and you will work on live briefs and building projects. We have close links with local employers such as Telford Homes and Flannery.



LEVEL 1

Construction

(Multi-Skills) 1 year

Plumbing

1 year

Electrical Installation

1 year

Painting and Decorating

1 year

Site Carpentry

1 year

LEVEL 2

Electrical Installation

1 year

Site Carpentry

1 year

Painting and Decorating

1 year

Plumbing Studies

1 year

Bricklaying

1 year

APPLY NOW

Apply now via our website.

Scan the code to find out more about our courses and apply for next September.



LEVEL 3

Carpentry and Joinery

1 year

T LEVEL

Onsite Construction

2 years



COURSE PROGRESSION AT WEST THAMES

Take an apprenticeship or progress to a course at a higher level.

ENTRY REQUIREMENTS

LEVEL 1 A successful interview. You will also need to complete an assessment for some courses.

LEVEL 2 2 GCSEs at grade 3 or above. Level 1 functional skills English and maths.

LEVEL 3 At least 4 GCSEs at grade 9-4, a merit or distinction at Level 2 with functional skills in English and maths.

See our website west-thames.ac.uk for specific course entry requirements.

MOTOR VEHICLE



The motor industry is undergoing rapid change and sustainable growth in both public and private transportation and it's a great area to build a long-term career – whether in design, service, manufacturing or sales.

The government is committed to the UK becoming a world leader in electric and driverless technologies which means that there will be exciting opportunities for those with experience and skills in the motor vehicle industry.

ABOUT OUR MOTOR VEHICLE COURSES

Our fully functional garage workshop at the Skills+Logistics Centre has industry standard equipment, providing a realistic work environment.

We have amazing links with employers such as Kwit Fit and Halfords.

Our courses are taught by highly experienced motor trade professionals and you'll get careers advice from guest speakers, ensuring that you have the skills and experience to progress to an apprenticeship, further qualifications or a job in the industry.

CAREERS/SALARY EXPECTATIONS

Mechanic

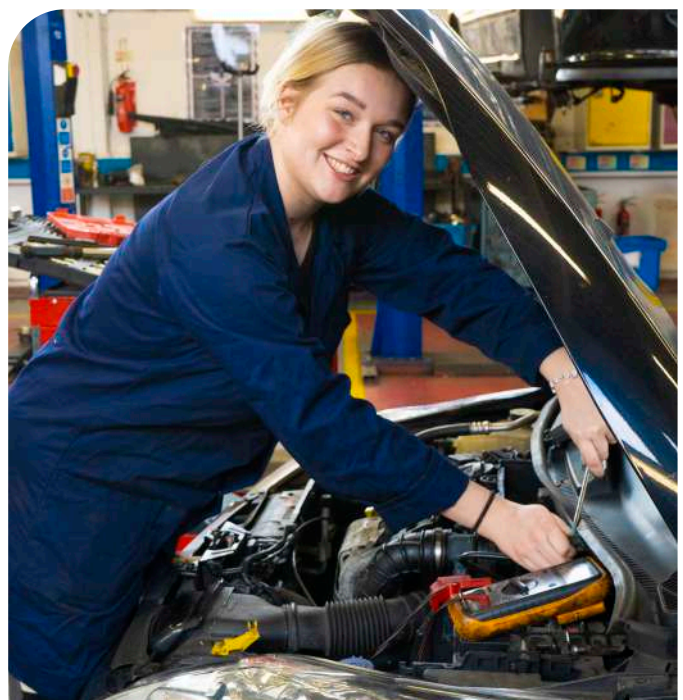
Up to £35,000

Garage manager

Up to £36,000

Paint sprayer

Up to £45,000



LEVEL 1

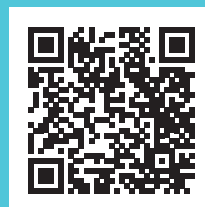
Vehicle Systems Maintenance with Introduction to Electric and Hybrid Vehicles

1 year

APPLY NOW

Apply now via our website.

Scan the code to find out more about our courses and apply for next September.



LEVEL 2

Light Vehicle Maintenance and Repair Principles With Electric and Hybrid Vehicles

1 year



COURSE PROGRESSION AT WEST THAMES

Take an apprenticeship or progress to a course at a higher level.

ENTRY REQUIREMENTS

LEVEL 1 A successful interview. You will also need to complete an assessment for some courses.

LEVEL 2 2 GCSEs at grade 3 or above. Level 1 functional skills English and maths.

LEVEL 3 At least 4 GCSEs at grade 9-4, a merit or distinction at Level 2 with functional skills in English and maths.

See our website west-thames.ac.uk for specific course entry requirements.



NEXT STEPS

After your course you will be ready to go onto university, find a job or start an apprenticeship.

SO WHY STAY WITH US?

- 🏠 A higher level qualification will improve your chance to progress in the competitive jobs market.
- 🏠 Our Higher Education courses are designed to give you practical skills, delivered by professional lecturers with industry experience. You will receive a high ratio of direct teaching time so that by the end of your studies you will be ready for the job market.
- 🏠 Our friendly staff will continue to give you all the support you need throughout your course.
- 🏠 You'll only have to pay two years of tuition fees. You will then have the option to progress to the second or final year of a degree course or finding a job of your choice.

OUR HE COURSES

Level 4

- Level 4 Diploma in Business Administration
- Level 4 Specialist Makeup
- Level 4 Professional Diploma in Technical and Production Practice for the Creative Industries
- Level 4 Certificate in Laser IPL
- Level 4 Award in Skin Blemish Removal
- Higher National Certificate in Applied Biology

Level 5

- Higher National Diploma in Film and TV
- Higher National Diploma in Applied Biology
- CELTA (Certificate in English Language Teaching to Adults)
- Certificate in Education in Further Education and Skills

**Find out more:
west-thames.ac.uk/higher-education**



OUR ALUMNI

We are proud of our student success in the College, but also when they leave us.

Have a look at some of our Alumni and how their time at West Thames College helped them to embark on rewarding careers.



HAMID IBRAHIM

Hamid Ibrahim, a distinguished alumnus of West Thames College, has achieved remarkable success in the field of digital animation and creative media. Originally from Uganda, Hamid's passion for storytelling and animation was nurtured during his time at West Thames College, where he completed a Level 3 Extended Diploma in Animation. This foundation paved the way for his further studies and professional accomplishments.

NESRIN ALHASAN

Nesrin Alhasan's academic journey at West Thames College exemplifies the transformative power of education. Starting in 2015 with limited English skills, Nesrin progressed rapidly through the ESOL program, achieving high marks in her GCSEs and excelling in the BTEC Level 3 Science course. Her dedication earned her two prestigious awards in 2019: Outstanding Academic Achievement and Science Student of the Year. Nesrin's hard work culminated in her going on to study Biomedical Science at Brunel University, where she graduated with a first class honours degree in 2022.



ASIM CHAUDHRY

Asim Chaudhry, a distinguished alumnus of West Thames College, has made significant strides in the entertainment industry. Born in Hounslow, Asim is renowned for co-creating the BAFTA Award-winning BBC series People Just Do Nothing. Reflecting on his time at West Thames, Asim credits the college with fostering his creative talents and building his confidence.

SIMBA MASAKU

Simba Masaku, a West Thames College alumnus, has established himself as a rising filmmaker. A former student of the Media and Performing Arts program, Simba recently returned to West Thames College to direct his new film O.I.N.K., offering current students a unique opportunity to gain real-world experience in film production. His debut film Hound gained significant recognition, being featured on Amazon Prime.



TRAVEL

MAIN CAMPUS ISLEWORTH

London Road TW7 4HS



Rail

Isleworth Station



Tube

Osterley or Hounslow East Stations (Piccadilly Line), then average 15 minute walk



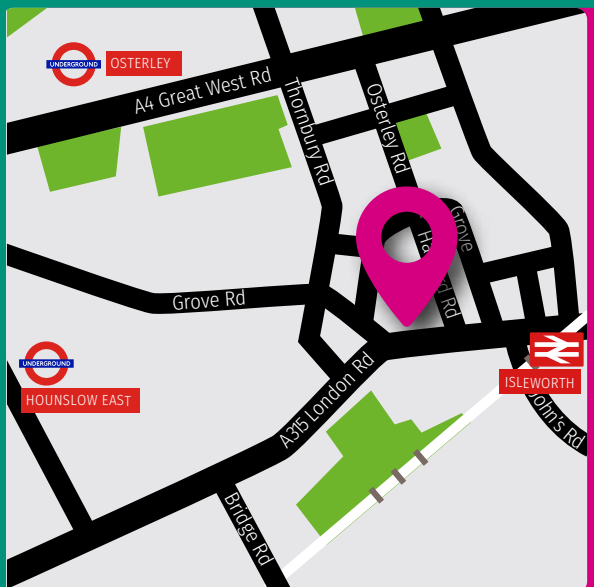
Bus

117, 235, 237, E8 and H37 buses stop outside the college



Car parking

Isleworth is available for part-time evening and disabled students only



SKILLS+LOGISTICS CENTRE FELTHAM

77 Boundaries Road TW13 5DR



Rail

Feltham Station



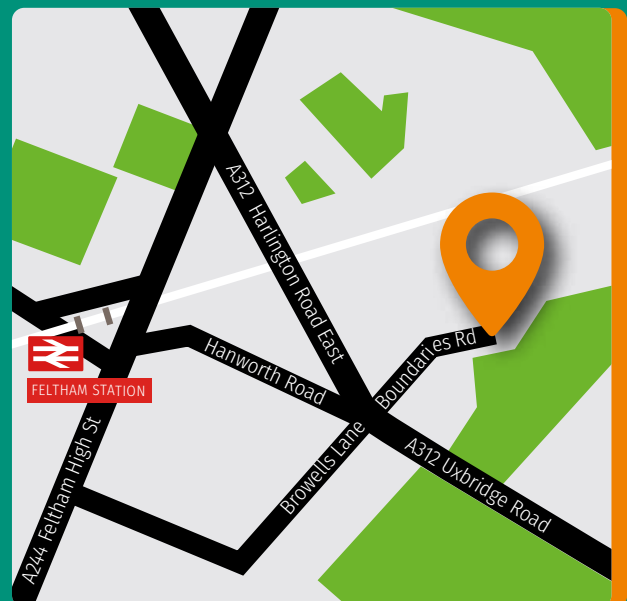
Bus

285 and 490 buses stop on Uxbridge Road



Car parking

Feltham has limited spaces for students





VISIT US



Main Campus Isleworth

London Road, Isleworth, TW7 4HS



Skills+Logistics Centre Feltham

77 Boundaries Road, Feltham, TW13 5DR

GET IN TOUCH

020 8326 2000

west-thames.ac.uk

@WestThamesCollege



ACCESSIBILITY



WEBSITE

For help in optimising your experience using our website, please visit the Accessibility page:



PRINT

To request this publication in print, please call
020 8326 2000

See our website **west-thames.ac.uk** for information about the college and our courses.

Call **020 8326 2000** for help and advice regarding our courses and support services.