



West Thames
College London

Ofsted
Outstanding
Provider



ADULT COURSES

**Jobcentre Plus Referral Needed
JANUARY 2026**

 **Skills+**
Logistics
Centre

CONTENTS

CONTENT LIST

+ Welcome	3
+ About Us	4
+ Open Days	5
+ Course List	6

MAIN CAMPUS ISLEWORTH

London Road TW7 4HS



Rail

Isleworth Station



Tube

Osterley or Hounslow East Stations (Piccadilly Line), then average 15 minute walk



Bus

117, 235, 237, E8 and H37 buses stop outside the college



Car parking

Isleworth is available for part-time evening and disabled students only

COURSE LIST

Health and Childcare 6

Award in Introduction to Health, Social Care and Children's and Young Peoples Settings

Award in Caring for Children

Hairdressing 8

Award in Introduction to Hair and Beauty Sector

Logistics 10

Essential Skills for Warehousing and Logistics

SKILLS+LOGISTICS CENTRE FELTHAM

77 Boundaries Road TW13 5DR



Rail

Feltham Station



Bus

285 and 490 buses stop on Uxbridge Road



Car parking

Feltham has limited spaces for students

Scan the QR codes to follow us on social media



Instagram Facebook TikTok LinkedIn YouTube

WELCOME

Please be advised that you must be referred by the Jobcentre Plus (JCP) team in order to join one of these courses.



Marta Gajewska, CEO & Principal

- Our short courses are taught by industry professionals
- Our strong links with employers provide access to industry leaders and excellent work experience opportunities
- We are proud to work with a range of employers including Brentford Community Sports Trust, Sky, and NHS
- Our campuses include a range of state-of-the-art facilities and workshops, that were described as 'Outstanding' by Ofsted (2021)
- Friendly and committed staff will give you support and guidance to help you succeed.

We are delighted that you are interested in studying a short course with us. We also have a range of vocational courses, including apprenticeships and T-Levels to give you the skills and experience you need to fulfil your goals.

START HERE GO FAR

ABOUT US

WHY CHOOSE WEST THAMES COLLEGE



Work Experience
opportunities

#1 College in London
for student achievement



Award Winning
community, open to all

Diversity and Inclusion
where everyone is
welcome



Industry Professionals
teach our students

Rated Outstanding
by Ofsted



Student Support
and well-being

100+
courses
in 24 course areas
across 2 campuses



Progression to top universities and onto
amazing careers

OUR CAMPUSES

West Thames College is located in West London and based over two campuses. Our logistic courses are all held at the Feltham Skills+Logistics Centre.



Isleworth Campus

London Road, Isleworth
TW7 4HS



Skills+Logistics Centre

77 Boundaries Road Feltham
TW13 5DR

OPEN DAYS

Skills+Logistics - **FELTHAM**

Tuesday 3 February 2026, 5-7pm

Tuesday 23 June 2026, 5-7pm

Main Campus - **ISLEWORTH**

Wednesday 28 January 2026, 5-7pm

Saturday 7 March 2026, 10am-1pm

Wednesday 17 June 2026, 5-7pm

To Book your slot
scan the QR code
or by visiting west-thames.ac.uk



HEALTH AND CHILDCARE

Working in health, social care or childcare is a great way to make a difference, by helping people individually or driving improvements in society.

These careers are emotionally challenging but can also be highly rewarding. To thrive you must be able to build strong relationships with others, your colleagues, patients and service users.

CAREERS/SALARY EXPECTATIONS

Social services managers and directors

Up to £68,000

Counsellor

Up to £47,000

Adult Nurse

Starting at Band 5 £40,000

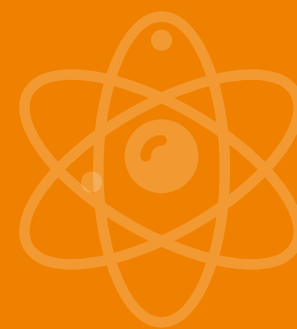


ABOUT OUR HEALTH, CARE AND CHILDCARE COURSES

Our courses have high success and progression rates and you will develop the knowledge and skills relevant to the Health and Social Care industry.

You will undertake work placements in health and care settings, such as residential homes, pharmacies, children's nurseries and care homes for people with disabilities so you can develop experience in the industry.

For Careers in: Social Care and Child Care



AWARD IN INTRODUCTION TO HEALTH, SOCIAL CARE AND YOUNG PEOPLE'S SETTINGS

LEVEL 1

FEES: TBC

STARTS: 12th January 2026

DAYS / TIME: 20 hours a week

LOCATION: Isleworth

DURATION: 3 Weeks

The Level 1 Award in Introduction to Health, Social Care and Children's and Young People's Settings aims to develop students' knowledge and awareness of health, social care and children's and young people's settings. Students will develop an understanding of the similarities and differences between these settings.

WHAT WILL I STUDY?

The course covers health and social care topics to develop your understanding of:

- The range of services and roles
- Principles and values
- Communication
- Equality, diversity and inclusion

Assessment:

Assessment is continuous throughout the course and you will build a portfolio of work by completing assignments such as written assignments or tasks to include designing a leaflet, presentations, posters or creating information board.

ENTRY REQUIREMENTS:

You do not need to have any previous qualifications in health or social care, but you should be able to give reasons for wanting to work in health and social care or with children

AWARD IN CARING FOR CHILDREN

LEVEL 1

FEES: TBC

STARTS: 19th January 2026

DAYS / TIME: 20 hours a week

LOCATION: Isleworth

DURATION: 3 Weeks

The Level 1 Award in Caring for Children course aims to stimulate interest and enable students to develop an understanding of the skills and knowledge needed to care for young children

WHAT WILL I STUDY?

The course helps to develop your understanding of:

- Sharing learning experiences with children
- Growth and development of young children
- Preparing your next steps.

Assessment:

Assessment is continuous throughout the course and you will build a portfolio of work by completing assignments such as written assignments or tasks to include designing a leaflet, presentations, posters or creating information board.

ENTRY REQUIREMENTS:

You do not need to have any previous qualifications in caring for children, but you should be able to demonstrate your interest supporting children's learning and development.

HAIR & BEAUTY

No matter what your interests, there is a career path in hair and beauty to suit you. Teachers at West Thames College have professional industry experience and The Salons is open to the public, giving you opportunities to develop your client handling skills and master the latest treatments.

CAREERS/SALARY EXPECTATIONS

Hairdressing and beauty salon managers and proprietors

Up to £27,000

Hairdressers and barbers

Up to £30,000



ABOUT OUR HAIR & BEAUTY COURSE

Our courses have high success rates and are staffed by teachers with extensive professional experience. You will train in our professional hair and beauty salons, which is open to the public, so you can develop your customer service skills, as well as taking part in industry visits and exhibitions in the UK.

Our students have gained a lot of success and often win local and national competitions, as well as hosting WorldSkills UK competitions in our own salon. Links with L'Oreal and MAC, ensure that students use the best products.

After leaving the College, students have become beauty therapists, spa therapists, makeup artists and cruise ship therapists, as well as opening their own salons.

For Careers in: Hairdresser, Stylist, Makeup Artist



AWARD IN INTRODUCTION TO HAIR AND BEAUTY SECTOR

LEVEL 1

This course has been specifically designed to develop your practical skills through introducing you to the hair and beauty industries and how you should present a professional image in the salon

FEES: TBC

STARTS: 24th January 2026

DAYS / TIME: 15 hours a week

LOCATION: Isleworth

DURATION: 4 Weeks

WHAT WILL I STUDY?

You will be able to choose from the following units:

- Introduction to the hair and beauty sector
- Presenting a professional image
- Basic manicure
- Create an image using hair and beauty techniques
- Head massage
- Basic make up
- Styling hair

ASSESSMENT METHOD:

Assessment is continuous throughout the course and you will build a portfolio of work by completing assignments such as written assignments or tasks to include designing a leaflet, presentations, posters or creating information board.

ENTRY REQUIREMENTS:

You do not need to have any previous qualifications; however, a good understanding of English is needed.



LOGISTICS



Logistics is crucial for business operations, ensuring products are delivered quickly and efficiently with minimal risk. It involves planning, organising, controlling, and executing the movement and management of goods from origin to destination, using various techniques and technologies.

ABOUT OUR LOGISTIC COURSES

Key aspects include warehousing, inventory management, and transportation. Studying logistics is important because it equips individuals with the skills needed to optimise supply chains, reduce costs, and improve overall efficiency.

The West Thames College Skills + Logistics Centre is based in Feltham and it is a prime location to support the local area in providing candidates to the workforce.

As a college, we offer a range of courses that support candidates in developing skills to enter one of the largest sectors in the UK.

We also offer refreshers courses.

CAREERS/SALARY EXPECTATIONS

Logistics Assistant

Up to £20,000

Freight Agent

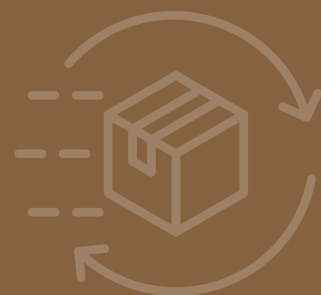
Up to £35,000

Supply Chain Manager

Up to £45,000



For Careers in: Supply Chain and Warehouse



ESSENTIAL SKILLS FOR WAREHOUSING AND LOGISTICS

LEVEL 1

This course is designed to provide learners with a practical foundation for starting or advancing a career in the logistics sector. It introduces key concepts, processes, and workplace practices that underpin the efficient movement, storage, and handling of goods across supply chains.

STARTS: January, February, April, May and June 2026

DAYS / TIME: TBC

LOCATION: Skills+Logistics Centre, Feltham

DURATION: 13 Days

WHAT WILL I STUDY?

- Award in Progression
- Certificate in Warehousing and Storage
- Award in Forklift Operations

NEXT STEPS:

Many students use the skills and knowledge gained to move directly into employment, particularly in entry-level roles where strong communication, organisational ability, and workplace readiness are highly valued. Alternatively, learners may choose to progress into further studies, building on their foundation with higher-level qualifications in areas such as Warehousing and Logistics, Business, or other vocational pathways.

ENTRY REQUIREMENTS:

There are no entry requirements, but an interview and assessment will be required.



GET IN TOUCH

020 8326 2000

west-thames.ac.uk

@WestThamesCollege



PRINT DATE: DECEMBER 2025

Every effort has been made to ensure that the information in this prospectus is accurate and up to date at the time of publication. The College reserves the right to make changes to courses, entry requirements, services, facilities, or fees without prior notice, where it is necessary or desirable to do so.



**West Thames
College** London



**Skills+
Logistics
Centre**

Ofsted
Outstanding
Provider